

Product datasheet

Recombinant Human Sts1 protein ab153560

[1 Image](#)

Description

Product name Recombinant Human Sts1 protein

Expression system Wheat germ

Protein length Full length protein

Animal free No

Nature Recombinant

Species Human

Sequence

```
MAQYGHPSPLGMAAREELYSKVTPRRNRQQRPGTIKHGS
ALDVLLSMGFP
RARAQKALASTGGRSVQAACDWLFSHVGDPLDDPLPR
EYVLYLRPTGPL
AQKLSDFWQQSKQICGKNKAHNIFPHITLCQFFMCEDSKV
DALGEALQTT
VSRWKCKFSAPLPLELYTSSNFIGLFVKEDSAEVLKFFAA
DFAAEAASKT
EVHVEPHKKQLHVTLAYHFQASHLPTLEKLAQNIDVKLGC
DWVATIFSRD
IRFANHETLQVIYPYTPQNDELELVPGDFIFMSPMEQTST
SEGWIYGTS
LTTGCSGLLPENYITKADECSTWIFHGYSILNTSSNSLTF
GDGVLERR
PYEDQGLGETTPTIICQPMQPLRVNSQPGPQKRCLFVCR
HGERMDVVFG
KYWLSQCQFDKGRYIRTNLNMPHSLPQRSGGFRDYEKDA
PITVFGCMQAR
LVGEALLESNTIIDHVYCSPSLRCVQTAHNILKGLQQENHL
KIRVEPGLF
EWTKWWAGSTLPAWIPPELAAANLSVDTTYRPHIPISKLV
VSESYDTYI
SRSFQVTKEIISECKSKGNNILMAHASSLEACTCQLQGLSP
QNSKDFVQ
MVRKIPYLGFCSCHEELGETGIWQLTDPPIPLPLTHGPTGGFN
WRETLLE
```

Amino acids 1 to 649

Tags GST tag N-Terminus

Specifications

Our **Abpromise guarantee** covers the use of **ab153560** in the following tested applications.

The application notes include recommended starting dilutions; optimal dilutions/concentrations should be determined by the end user.

Applications Western blot

ELISA

Form Liquid

Additional notes

Preparation and Storage

Stability and Storage Shipped on dry ice. Upon delivery aliquot and store at -80°C. Avoid freeze / thaw cycles.

pH: 8.00

Constituents: 0.31% Glutathione, 0.79% Tris HCl

General Info

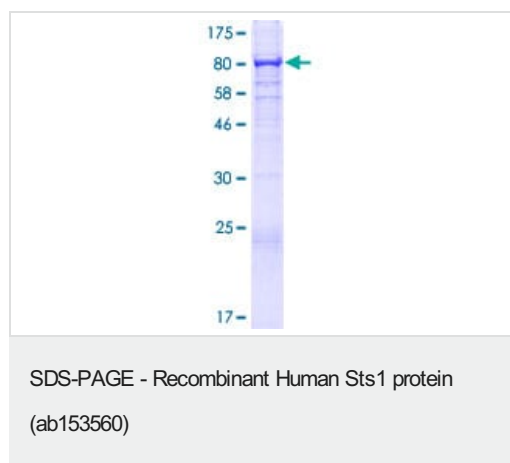
Function Interferes with CBL-mediated down-regulation and degradation of receptor-type tyrosine kinases. Promotes accumulation of activated target receptors, such as T-cell receptors and EGFR, on the cell surface. Exhibits tyrosine phosphatase activity toward several substrates including EGFR, FAK, SYK, and ZAP70. Down-regulates proteins that are dually modified by both protein tyrosine phosphorylation and ubiquitination.

Sequence similarities Contains 1 SH3 domain.

Contains 1 UBA domain.

Cellular localization Cytoplasm. Nucleus.

Images



ab153560 on a 12.5% SDS-PAGE stained with Coomassie Blue.

Please note: All products are "FOR RESEARCH USE ONLY. NOT FOR USE IN DIAGNOSTIC PROCEDURES"

Our Abpromise to you: Quality guaranteed and expert technical support

- Replacement or refund for products not performing as stated on the datasheet
- Valid for 12 months from date of delivery
- Response to your inquiry within 24 hours

- We provide support in Chinese, English, French, German, Japanese and Spanish
- Extensive multi-media technical resources to help you
- We investigate all quality concerns to ensure our products perform to the highest standards

If the product does not perform as described on this datasheet, we will offer a refund or replacement. For full details of the Abpromise, please visit <https://www.abcam.com/abpromise> or contact our technical team.

Terms and conditions

- Guarantee only valid for products bought direct from Abcam or one of our authorized distributors