

Recombinant Human Sulfatase 2/SULF2 protein

ab163281

1 Image

Description

Product name	Recombinant Human Sulfatase 2/SULF2 protein
Expression system	Wheat germ
Protein length	Full length protein
Animal free	No
Nature	Recombinant
Species	Human
Sequence	MGPPSLVLCLLSATVFSLLGGSSAFLSHHRLKGRFQRDR RNIRPNIIILVL TDDQDVELGSMQVMNKTRRIMEQGGAHFINAFVTTPMCC PSRSSILTGKY VHNHNTYTNNENCSSPSWQAQHESTRFAVYLNSTGYRTA FFGKYLNEYNG SYVPPGWKEWVGLLKNSRFYNYTLCRNGVKEKHGSDYS KDYLTDLITNDS VSFFRTSKKMYPHRPVLMVISHAAPHGPEDSAPQYSRLF PNASQHITPSY NYAPNPDKHWIMRYTGPMKPIHMEFTNMLQRKRLQTLMSV DDSMETIYNM LVETGELDNTYVYTADHGYHIGQFGLVKGKSMPYEFDIRV PFYVRGPNV EAGCLNPHIVLNIDLAPTILDIAGLDIPADMKGKSILKLLDTE RPVNRFH LKKKMRVWRDSFLVERGKLLHKRDNDKVDAQEENFLPK YQRVKDLQCRAE YQTACEQLGQKWQCVEDATGKLKLHKCKGPMRLGGSRA LSNLVPKYYGQG SEACTCDSGDYKLSLAGRRKKLFKKKYKASYVRSRSIRSV AIEVDGRVYH VGLGDAAQPRNLTKRHWP GAPEDQDDKDGGDFSGTGG LPDYSAANPIKVT HRCYILENDTVQCDDLKYSLQAWKDHKLHIDHEIETLQNKI KNLREVRG HLKKKRPEECDCHKISYHTQHKGRLKHRGSSLHPFRKGL

QEKDKVWLLRE
QKRKKKLRKLLKRLQNNDTCMPGLTCFTHDNQHWQTAP
FWTLGPFCACT
SANNNTYWCMRTINETHNFLFCFATGFLEYFDLNTDPYQ
LMNAVNTLDR
DVLNQLHVQLMELRSCKGYKQCNPRTRNMDLGLKDGGG
YEYRQFQRRKW PEMKRPSSKSLGQLWEGWEG

Amino acids	1 to 870
Tags	GST tag N-Terminus

Specifications

Our **Abpromise guarantee** covers the use of **ab163281** in the following tested applications.

The application notes include recommended starting dilutions; optimal dilutions/concentrations should be determined by the end user.

Applications	Western blot ELISA
Form	Liquid
Additional notes	This product was previously labelled as Sulfatase 2.

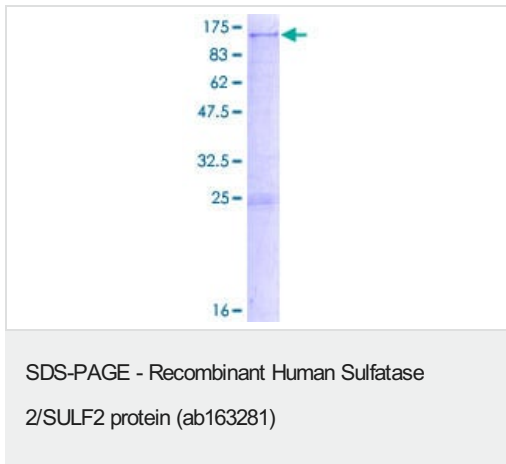
Preparation and Storage

Stability and Storage	Shipped on dry ice. Upon delivery aliquot and store at -80°C. Avoid freeze / thaw cycles. pH: 8.00 Constituents: 0.31% Glutathione, 0.79% Tris HCl
------------------------------	--

General Info

Function	Exhibits arylsulfatase activity and highly specific endoglucosamine-6-sulfatase activity. It can remove sulfate from the C-6 position of glucosamine within specific subregions of intact heparin.
Tissue specificity	Expressed at highest levels in the ovary, skeletal muscle, stomach, brain, uterus, heart, kidney and placenta.
Sequence similarities	Belongs to the sulfatase family.
Post-translational modifications	The conversion to 3-oxoalanine (also known as C-formylglycine, FGly), of a serine or cysteine residue in prokaryotes and of a cysteine residue in eukaryotes, is critical for catalytic activity.
Cellular localization	Endoplasmic reticulum. Golgi apparatus > Golgi stack. Cell surface. Also localized on the cell surface.

Images



ab163281 on a 12.5% SDS-PAGE stained with Coomassie Blue.

Please note: All products are "FOR RESEARCH USE ONLY. NOT FOR USE IN DIAGNOSTIC PROCEDURES"

Our Abpromise to you: Quality guaranteed and expert technical support

- Replacement or refund for products not performing as stated on the datasheet
- Valid for 12 months from date of delivery
- Response to your inquiry within 24 hours
- We provide support in Chinese, English, French, German, Japanese and Spanish
- Extensive multi-media technical resources to help you
- We investigate all quality concerns to ensure our products perform to the highest standards

If the product does not perform as described on this datasheet, we will offer a refund or replacement. For full details of the Abpromise, please visit <https://www.abcam.com/abpromise> or contact our technical team.

Terms and conditions

- Guarantee only valid for products bought direct from Abcam or one of our authorized distributors