

Product datasheet

Recombinant Human Sumo 4 protein ab157025

[1 Image](#)

Description

Product name	Recombinant Human Sumo 4 protein
Purity	> 90 % SDS-PAGE.
Expression system	Escherichia coli
Accession	<u>Q6EEV6</u>
Protein length	Full length protein
Animal free	No
Nature	Recombinant
Species	Human
Sequence	MANEKPTEEV KTENNNHINL KVAGQDGSVV QFKIKRQTPL SKLMKAYCEP RGLSMKQIRF RFGGQPISGT DKPAQLEMED EDTIDVFQQP TGGVY
Predicted molecular weight	13 kDa including tags
Amino acids	1 to 93

Specifications

Our **Abpromise guarantee** covers the use of **ab157025** in the following tested applications.

The application notes include recommended starting dilutions; optimal dilutions/concentrations should be determined by the end user.

Applications	SDS-PAGE Functional Studies
Form	Liquid

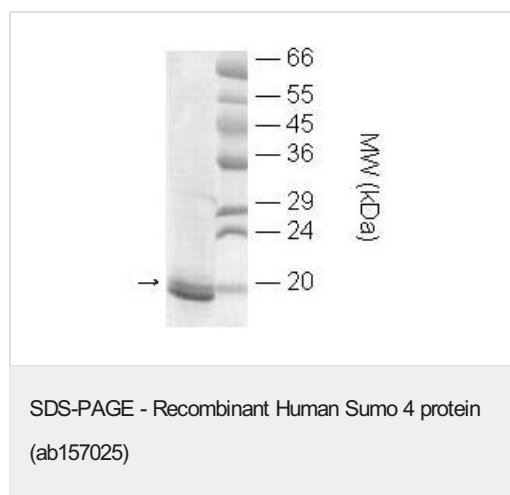
Preparation and Storage

Stability and Storage	Shipped at 4°C. Upon delivery aliquot. Store at -80°C. Avoid freeze / thaw cycle. Constituents: 0.02% (R*,R*)-1,4-Dimercaptobutan-2,3-diol, 0.48% HEPES
------------------------------	--

General Info

Function	Ubiquitin-like protein which can be covalently attached to target lysines as a monomer. Does not seem to be involved in protein degradation and may modulate protein subcellular localization, stability or activity. Upon oxidative stress, conjugates to various anti-oxidant enzymes, chaperones, and stress defense proteins. May also conjugate to NFKBIA, TFAP2A and FOS, negatively regulating their transcriptional activity, and to NR3C1, positively regulating its transcriptional activity. Covalent attachment to its substrates requires prior activation by the E1 complex SAE1-SAE2 and linkage to the E2 enzyme UBE2I.
Tissue specificity	Expressed mainly in adult and embryonic kidney. Expressed at various levels in immune tissues, with the highest expression in the lymph node and spleen.
Sequence similarities	Belongs to the ubiquitin family. SUMO subfamily. Contains 1 ubiquitin-like domain.
Post-translational modifications	In contrast to SUMO1, SUMO2 and SUMO3, seems to be insensitive to sentrin-specific proteases due to the presence of Pro-90. This may impair processing to mature form and conjugation to substrates.

Images



SDS-PAGE analysis of ab157025 (1.5 µg), stained with coomassie blue.

Please note: All products are "FOR RESEARCH USE ONLY. NOT FOR USE IN DIAGNOSTIC PROCEDURES"

Our Abpromise to you: Quality guaranteed and expert technical support

- Replacement or refund for products not performing as stated on the datasheet
- Valid for 12 months from date of delivery
- Response to your inquiry within 24 hours
- We provide support in Chinese, English, French, German, Japanese and Spanish
- Extensive multi-media technical resources to help you
- We investigate all quality concerns to ensure our products perform to the highest standards

If the product does not perform as described on this datasheet, we will offer a refund or replacement. For full details of the Abpromise, please visit <https://www.abcam.com/abpromise> or contact our technical team.

Terms and conditions

- Guarantee only valid for products bought direct from Abcam or one of our authorized distributors