

## Product datasheet

# Recombinant Human SYBL1/VAMP-7 protein ab131706

1 Image

### Description

<b>Product name</b>	Recombinant Human SYBL1/VAMP-7 protein
<b>Purity</b>	> 90 % SDS-PAGE. ab131706 is purified using conventional chromatography techniques
<b>Expression system</b>	Escherichia coli
<b>Accession</b>	<b><u>P51809</u></b>
<b>Protein length</b>	Protein fragment
<b>Animal free</b>	No
<b>Nature</b>	Recombinant
<b>Species</b>	Human
<b>Sequence</b>	<b>MGSSHHHHHH SSGLVPRGSH MGSMAILFAV</b> VARGTILAK HAWCGGNFLE VTEQILAKIP SENNKLTYSH GNYLFHYICQ DRIVYLCITD DDFERSRAFN FLNEIKKRFQ TTYGSRAQTA LPYAMNSEFS SVLAAQLKHH SENKGLDKVM ETQAQVDELK GIMVRNIDL AQRGERLELL IDKTENLVDS SVTFKTTSRN LARAMCMKNL K
<b>Predicted molecular weight</b>	23 kDa including tags
<b>Amino acids</b>	1 to 188
<b>Tags</b>	His tag N-Terminus

### Specifications

Our **Abpromise guarantee** covers the use of **ab131706** in the following tested applications.

The application notes include recommended starting dilutions; optimal dilutions/concentrations should be determined by the end user.

<b>Applications</b>	SDS-PAGE Mass Spectrometry
<b>Mass spectrometry</b>	MALDI-TOF
<b>Form</b>	Liquid
<b>Additional notes</b>	Previously labelled as SYBL1.

### Preparation and Storage

## Preparation and Storage

### Stability and Storage

Shipped at 4°C. Store at +4°C short term (1-2 weeks). Upon delivery aliquot. Store at -20°C or -80°C. Avoid freeze / thaw cycle.

pH: 8.00

Constituents: 0.32% Tris HCl, 20% Glycerol (glycerin, glycerine), 0.88% Sodium chloride

## General Info

### Function

Involved in the targeting and/or fusion of transport vesicles to their target membrane during transport of proteins from the early endosome to the lysosome. Required for heterotypic fusion of late endosomes with lysosomes and homotypic lysosomal fusion. Required for calcium regulated lysosomal exocytosis. Involved in the export of chylomicrons from the endoplasmic reticulum to the cis Golgi. Required for exocytosis of mediators during eosinophil and neutrophil degranulation, and target cell killing by natural killer cells. Required for focal exocytosis of late endocytic vesicles during phagosome formation.

### Tissue specificity

Detected in all tissues tested.

### Sequence similarities

Belongs to the synaptobrevin family.

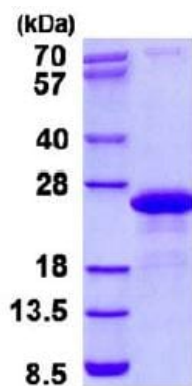
Contains 1 longin domain.

Contains 1 v-SNARE coiled-coil homology domain.

### Cellular localization

Cytoplasmic vesicle > secretory vesicle membrane. Golgi apparatus > trans-Golgi network membrane. Late endosome membrane. Lysosome membrane. Endoplasmic reticulum membrane. Cytoplasmic vesicle > phagosome membrane.

## Images



15% SDS-PAGE showing ab131706 at approximately 23.0 kDa (3µg).

SDS-PAGE - Recombinant Human SYBL1/VAMP-7 protein (ab131706)

**Please note:** All products are "FOR RESEARCH USE ONLY. NOT FOR USE IN DIAGNOSTIC PROCEDURES"

## Our Abpromise to you: Quality guaranteed and expert technical support

- Replacement or refund for products not performing as stated on the datasheet

- Valid for 12 months from date of delivery
- Response to your inquiry within 24 hours
- We provide support in Chinese, English, French, German, Japanese and Spanish
- Extensive multi-media technical resources to help you
- We investigate all quality concerns to ensure our products perform to the highest standards

If the product does not perform as described on this datasheet, we will offer a refund or replacement. For full details of the Abpromise, please visit <https://www.abcam.com/abpromise> or contact our technical team.

#### **Terms and conditions**

---

- Guarantee only valid for products bought direct from Abcam or one of our authorized distributors