

Recombinant Human Synaptophysin protein ab114166

1 Image

Description	
Product name	Recombinant Human Synaptophysin protein
Expression system	Wheat germ
Accession	<u>P08247</u>
Protein length	Full length protein
Animal free	No
Nature	Recombinant
Species	Human
Sequence	MLLLADMDVVNQLVAGGQFRVVKEPLGFVKVLQWVFAIF AFATCGSYS GELQLNVDCANKTESDLSIEVEFEYPFRLHQVYFDAPTCR GGTTKVFLVG DYSSSAEFFVTAVFAFLYSMGALATYIFLQNKYRENNKG PMLDFLATAV FAFMWLVS ^{SA} AWAKGLSDVKMATDPENIIKEMPVCRQTG NTCKELRDLVT SGLNTSVVFGFLNLVLWVG ^{NL} WFVFKETGWAAPFLRAPP GAPEKQPAPGD AYGDAGYGQGPGGYGPQDSYGPQGGYQPDY ^{GQ} PAGSG GSGYGPQGDY ^{GQ} Q GYGPQGAPTSFSNQ ^M
Predicted molecular weight	61 kDa including tags
Amino acids	1 to 313

Specifications	
Our <u>Abpromise guarantee</u> covers the use of ab114166 in the following tested applications.	
The application notes include recommended starting dilutions; optimal dilutions/concentrations should be determined by the end user.	
Applications	SDS-PAGE ELISA Western blot
Form	Liquid
Preparation and Storage	

Preparation and Storage

Stability and Storage

Shipped on dry ice. Upon delivery aliquot and store at -80°C. Avoid freeze / thaw cycles.

pH: 8.00

Constituents: 0.3% Glutathione, 0.79% Tris HCl

General Info

Function

Possibly involved in structural functions as organizing other membrane components or in targeting the vesicles to the plasma membrane. Involved in the regulation of short-term and long-term synaptic plasticity.

Tissue specificity

Characteristic of a type of small (30-80 nm) neurosecretory vesicles, including presynaptic vesicles, but also vesicles of various neuroendocrine cells of both neuronal and epithelial phenotype.

Involvement in disease

Mental retardation, X-linked, SYP-related

Sequence similarities

Belongs to the synaptophysin/synaptobrevin family.

Contains 1 MARVEL domain.

Domain

The calcium-binding activity is thought to be localized in the cytoplasmic tail of the protein.

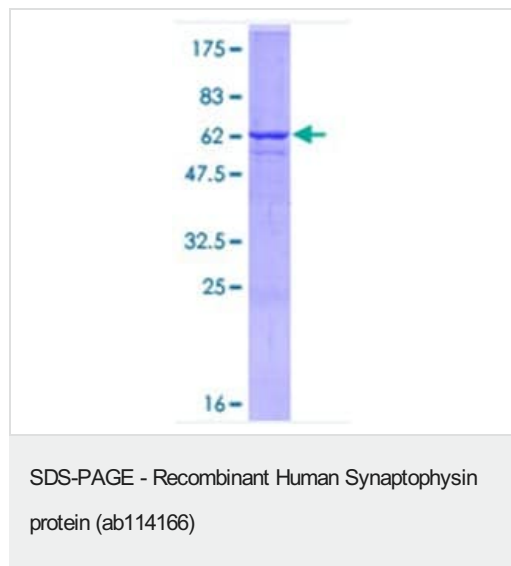
Post-translational modifications

Ubiquitinated; mediated by SIAH1 or SIAH2 and leading to its subsequent proteasomal degradation.

Cellular localization

Cytoplasmic vesicle, secretory vesicle, synaptic vesicle membrane. Cell junction, synapse, synaptosome.

Images



12.5% SDS-PAGE analysis of ab114166, stained with Coomassie Blue.

Please note: All products are "FOR RESEARCH USE ONLY. NOT FOR USE IN DIAGNOSTIC PROCEDURES"

Our Abpromise to you: Quality guaranteed and expert technical support

- Replacement or refund for products not performing as stated on the datasheet

- Valid for 12 months from date of delivery
- Response to your inquiry within 24 hours
- We provide support in Chinese, English, French, German, Japanese and Spanish
- Extensive multi-media technical resources to help you
- We investigate all quality concerns to ensure our products perform to the highest standards

If the product does not perform as described on this datasheet, we will offer a refund or replacement. For full details of the Abpromise, please visit <https://www.abcam.com/abpromise> or contact our technical team.

Terms and conditions

- Guarantee only valid for products bought direct from Abcam or one of our authorized distributors