

Recombinant human TAF1L protein ab198161

2 Images

Description	
Product name	Recombinant human TAF1L protein
Purity	>= 80 % SDS-PAGE.
Expression system	Escherichia coli
Accession	<u>Q8IZX4</u>
Protein length	Protein fragment
Animal free	No
Nature	Recombinant
Species	Human
Sequence	MSPILGYWKIKGLVQPTRLLEYLEEKYEEHLYERDEGDK WRNKKFELGL EFPNLPYYIDGDVKLTQSMAIIRYADKHNMLGGCPKERAEL SMLEGAVL DIRYGVSRIAYSKDFETLKVDFLSKLPEMLKMFEDRLCHKT YLNGDHVTH PDFMLYDALDVVLYMDPMCLDAFPKLVCFKKRIEAIQIDK YLKSSKYIA WPLQGWWQATFGGGDHPPKSDLEVLFGGPLGSTDPMVTL SSILESINDMR DLPNTHPFHTPVNAKVVKDYKIIITRPMDLQTLRENVKCL YPSREEFRE HLELMVKN SATYNGPKHSLTQISQSMLDLCDEKLKEKEDKL ARLEKAINP LLDDDDQVAFSFI LDNIVTQKMMAVPDSWPFHHPVNKKF VPDYK MIVNP VDLETIRKNISKHKYQSRESFLDDVNLILANSVKYNGPESQ YTKTAQEV NICYQTITEYDEHLTQLEKDICTAKEAALEEAE
Predicted molecular weight	56 kDa including tags
Amino acids	1398 to 1649
Tags	GST tag N-Terminus
Additional sequence information	Corresponding to bromodomains 1 and 2.
Specifications	

Specifications

Our **Abpromise guarantee** covers the use of **ab198161** in the following tested applications.

The application notes include recommended starting dilutions; optimal dilutions/concentrations should be determined by the end user.

Applications	SDS-PAGE
	Functional Studies
Form	Liquid
Additional notes	Useful for the study of bromodomain binding assays, screening inhibitors, and selectivity profiling.

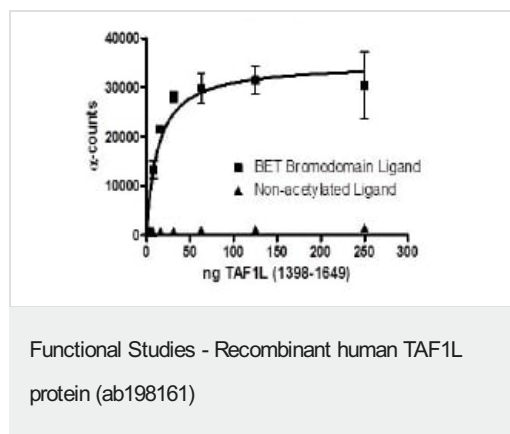
Preparation and Storage

Stability and Storage	Shipped on Dry Ice. Store at -80°C. Avoid freeze / thaw cycle.
	pH: 8.00
	Constituents: 0.71% Tris HCl, 0.72% Sodium chloride, 0.02% Potassium chloride, 10% Glycerol (glycerin, glycerine)
	This product is an active protein and may elicit a biological response in vivo, handle with caution.

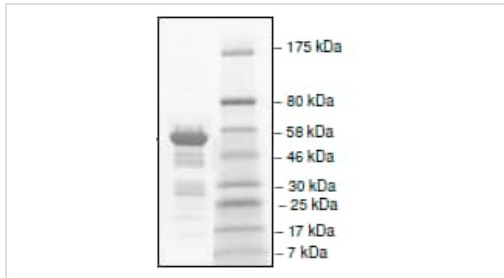
General Info

Function	May act as a functional substitute for TAF1/TAFII250 during male meiosis, when sex chromosomes are transcriptionally silenced.
Tissue specificity	Testis specific, expressed apparently in germ cells.
Sequence similarities	Belongs to the TAF1 family. Contains 2 bromo domains.
Cellular localization	Nucleus.

Images



Example of specific activity of ab198161.



SDS-PAGE - Recombinant human TAF1L protein
(ab198161)

4-20% SDS-PAGE analysis of ab198161 (1 µg) with Coomassie staining.

Please note: All products are "FOR RESEARCH USE ONLY. NOT FOR USE IN DIAGNOSTIC PROCEDURES"

Our Abpromise to you: Quality guaranteed and expert technical support

- Replacement or refund for products not performing as stated on the datasheet
- Valid for 12 months from date of delivery
- Response to your inquiry within 24 hours
- We provide support in Chinese, English, French, German, Japanese and Spanish
- Extensive multi-media technical resources to help you
- We investigate all quality concerns to ensure our products perform to the highest standards

If the product does not perform as described on this datasheet, we will offer a refund or replacement. For full details of the Abpromise, please visit <https://www.abcam.com/abpromise> or contact our technical team.

Terms and conditions

- Guarantee only valid for products bought direct from Abcam or one of our authorized distributors