

Recombinant Human TCP1 alpha/CCTA protein  
ab101043

1 Image

Description

Product name	Recombinant Human TCP1 alpha/CCTA protein
Purity	> 85 % SDS-PAGE. purified by using conventional chromatography.
Expression system	Escherichia coli
Accession	<u>P17987</u>
Protein length	Full length protein
Animal free	No
Nature	Recombinant
Species	Human
Sequence	MGSSHHHHHHSSGLVPRGSHMEGPLSVFGDRSTGETIRS QNVMAAASIAN VKSSLGPVGLDKMLVDDIGDVTITNDGATILKLEVEHPAA KVLCELAD LQDKEVGDGTTSVVIAAELLKNADELVKQKIHPTSVISGYR LACKEAVR YINENLIVNTDELGRDCLINAAKTSMSKIIINGDFFANMVV DAVLAIK YTDIRGQPRYPVNSVNILKAHGRSQMESMLISGYALNCVVG SQGMPKRV NAKIACLDNFLQKTKMKLGVQVVITDPEKLDQIRQRESGIT KERIQKILA TGANVILTTGGIDDMCLKYFVEAGAMAVRRVLKRDLEKRIAK ASGATILST LANLEGEETFEAAMLGQAEEVVQERICDDELILIKNTKART SASIIIRGA NDFMCDEMERSLHDALCVVKRVLESKSVVPGGGAVEAA LSYLENYATSM GSREQLAAEFARSLVIPNTLAVNAAQDSTDLEAKLRAFH NEAQVNPER KNLKWIGLDLSNGKPRDNKQAGVFEPTIVKVKSLKFATEA AIIIRIDDL IKLHPESKDD KHGSYEDAVHSGALND
Predicted molecular weight	63 kDa including tags

<b>Amino acids</b>	1 to 576
<b>Tags</b>	His tag N-Terminus

## Specifications

---

Our **Abpromise guarantee** covers the use of **ab101043** in the following tested applications.

The application notes include recommended starting dilutions; optimal dilutions/concentrations should be determined by the end user.

<b>Applications</b>	SDS-PAGE Mass Spectrometry
<b>Mass spectrometry</b>	MALDI-TOF
<b>Form</b>	Liquid
<b>Additional notes</b>	This product was previously labelled as TCP1 alpha

## Preparation and Storage

---

<b>Stability and Storage</b>	Shipped at 4°C. Store at +4°C short term (1-2 weeks). Upon delivery aliquot. Store at -20°C or -80°C. Avoid freeze / thaw cycle.  pH: 8.00 Constituents: 0.00174% PMSF, 0.0154% DTT, 0.316% Tris HCl, 10% Glycerol (glycerin, glycerine)
------------------------------	---

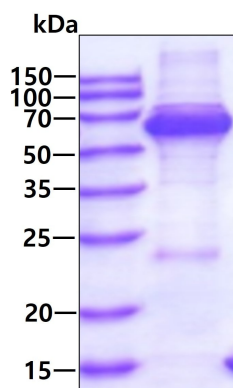
## General Info

---

<b>Function</b>	Molecular chaperone; assists the folding of proteins upon ATP hydrolysis. As part of the BBS/CCT complex may play a role in the assembly of BBSome, a complex involved in ciliogenesis regulating transports vesicles to the cilia. Known to play a role, in vitro, in the folding of actin and tubulin.
<b>Sequence similarities</b>	Belongs to the TCP-1 chaperonin family.
<b>Cellular localization</b>	Cytoplasm. Cytoplasm > cytoskeleton > centrosome.

## Images

---



SDS-PAGE - Recombinant Human TCP1  
alpha/CCTA protein (ab101043)

ab101043 at 3 µg being analysed by SDS-PAGE under reducing condition and visualized by coomassie blue stain.

**Please note:** All products are "FOR RESEARCH USE ONLY. NOT FOR USE IN DIAGNOSTIC PROCEDURES"

#### Our Abpromise to you: Quality guaranteed and expert technical support

---

- Replacement or refund for products not performing as stated on the datasheet
- Valid for 12 months from date of delivery
- Response to your inquiry within 24 hours
- We provide support in Chinese, English, French, German, Japanese and Spanish
- Extensive multi-media technical resources to help you
- We investigate all quality concerns to ensure our products perform to the highest standards

If the product does not perform as described on this datasheet, we will offer a refund or replacement. For full details of the Abpromise, please visit <https://www.abcam.com/abpromise> or contact our technical team.

#### Terms and conditions

---

- Guarantee only valid for products bought direct from Abcam or one of our authorized distributors