

Recombinant Human TEM8/ATR protein ab132123

1 Image

Description	
Product name	Recombinant Human TEM8/ATR protein
Expression system	Wheat germ
Accession	<u>Q9H6X2-2</u>
Protein length	Full length protein
Animal free	No
Nature	Recombinant
Species	Human
Sequence	MATAERRALGIGFQWLSLATLVLICAGQGGRREDGGPACY GGFDLYILD KSGSVLHHWNEIYYFVEQLAHKFISPQLRMSFVVFSTRGTT LMKLTEDRE QIRQGLEELQKVLPGGDTYMHEGFERASEQIYENRQGYR TASVIALTD GELHEDLFFYSEREANRSRDLGAMYCVGVKDFNETQLAR IADSKDHVFP VNDGFQALQGIIHSILKKSCIEILAAEPSTICAGESFQVVVRG NGFRHAR NVDRVLCSEFKINDSVTLNEKPFSVEDTYLLCPAPILKEVGM KAALQVSMN DGLSFISSSVIITTHCSDGSILAIALLILFLLLALALLWWFWP LCCTVI I KEVPPPPAESEENKIK
Predicted molecular weight	68 kDa including tags
Amino acids	1 to 368
Tags	GST tag N-Terminus

Specifications	
Our Abpromise guarantee covers the use of ab132123 in the following tested applications.	
The application notes include recommended starting dilutions; optimal dilutions/concentrations should be determined by the end user.	
Applications	SDS-PAGE Western blot ELISA

Form	Liquid
Additional notes	This product was previously labelled as TEM8.

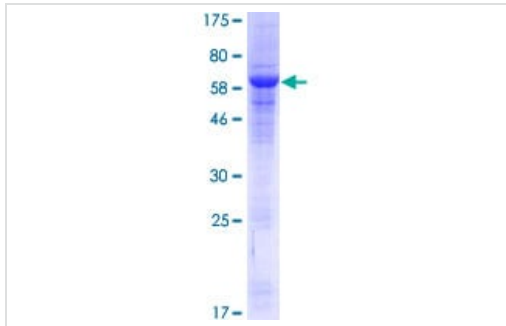
Preparation and Storage

Stability and Storage	Shipped on dry ice. Upon delivery aliquot and store at -80°C. Avoid freeze / thaw cycles. pH: 8.00 Constituents: 0.31% Glutathione, 0.79% Tris HCl
------------------------------	--

General Info

Function	Plays a role in cell attachment and migration. Interacts with extracellular matrix proteins and with the actin cytoskeleton. Mediates adhesion of cells to type 1 collagen and gelatin, reorganization of the actin cytoskeleton and promotes cell spreading. Plays a role in the angiogenic response of cultured umbilical vein endothelial cells.
Tissue specificity	Detected in umbilical vein endothelial cells (at protein level). Highly expressed in tumor endothelial cells.
Involvement in disease	Defects in ANTXR1 are associated with susceptibility to hemangioma capillary infantile (HCl) [MIM:602089]. HCl are benign, highly proliferative lesions involving aberrant localized growth of capillary endothelium. They are the most common tumor of infancy, occurring in up to 10% of all births. Hemangiomas tend to appear shortly after birth and show rapid neonatal growth for up to 12 months characterized by endothelial hypercellularity and increased numbers of mast cells. This phase is followed by slow involution at a rate of about 10% per year and replacement by fibrofatty stroma.
Sequence similarities	Belongs to the ATR family. Contains 1 VWFA domain.
Domain	Binding to PA occurs through the VWA domain.
Cellular localization	Cell membrane. Cell projection > lamellipodium membrane. Cell projection > filopodium membrane. At the membrane of lamellipodia and at the tip of actin-enriched filopodia. Colocalizes with actin at the base of lamellipodia.

Images



12.5% SDS-PAGE analysis of ab132123, stained with Coomassie Blue

SDS-PAGE - Recombinant Human TEM8/ATR protein (ab132123)

Please note: All products are "FOR RESEARCH USE ONLY. NOT FOR USE IN DIAGNOSTIC PROCEDURES"

Our Abpromise to you: Quality guaranteed and expert technical support

- Replacement or refund for products not performing as stated on the datasheet
- Valid for 12 months from date of delivery
- Response to your inquiry within 24 hours
- We provide support in Chinese, English, French, German, Japanese and Spanish
- Extensive multi-media technical resources to help you
- We investigate all quality concerns to ensure our products perform to the highest standards

If the product does not perform as described on this datasheet, we will offer a refund or replacement. For full details of the Abpromise, please visit <https://www.abcam.com/abpromise> or contact our technical team.

Terms and conditions

- Guarantee only valid for products bought direct from Abcam or one of our authorized distributors