

Product datasheet

Recombinant Human Testin protein ab172155

1 Image

Description

Product name	Recombinant Human Testin protein	
Purity	> 95 % SDS-PAGE.	
Endotoxin level	< 0.100 Eu/μg	
Expression system	Escherichia coli	
Accession	<u>Q9UGI8</u>	
Protein length	Full length protein	
Animal free	No	
Nature	Recombinant	
Species	Human	
Sequence	MDLENKVKKMGLGHEQGFAPCLKCKEKCEGFELHFWR KICRNCKCGQEE HDVLLSNEEDRKVGKLFEDTKYTTLIAKLSKGIPMYKRN MILTNPVAA KKNVSINTVTYEWAPPVQNQALARQYMQMLPKEKQPVAG SEGAQYRKKQL AKQLPAHDQDPSKCHELSPREVKEMEQFVKKYKSEALG VGDVKLPCEMDA QGPKQMNIPGGDRSTPAAVGAMEDKSAEHKRTQYSCYC CKLSMKEGDP YAERAGYDKLWHPACFVCSSTCHELLVDMYFWKNEKLYC GRHYCDSEKPR CAGCDELIFSNEYTQAENQNWHLKHFCCFDCDSILAGEIY VMVNDKPVCK PCYVKNHAVVCQGCHNAIDPEVQRVTYNNFSWHASTE LCSCCSKCLIG QKFMPVEGMVFCVVECKRMS	
Predicted molecular weight	48 kDa	
Amino acids	1 to 421	
Tags	His tag C-Terminus	

Specifications

Our **Abpromise guarantee** covers the use of **ab172155** in the following tested applications.

The application notes include recommended starting dilutions; optimal dilutions/concentrations should be determined by the end user.

Applications SDS-PAGE

Form Lyophilized

Preparation and Storage

Stability and Storage Shipped at 4°C. Store at +4°C short term (1-2 weeks). Upon delivery aliquot. Store at -20°C or -80°C. Avoid freeze / thaw cycle.

pH: 7.20

Constituents: 0.02% DTT, 0.88% Sodium chloride, 99% PBS

Reconstitution Always centrifuge tubes before opening. Do not mix by vortex or pipetting. It is not recommended to reconstitute to a concentration less than 100 µg/ml. Dissolve the lyophilized protein in 1X PBS.

General Info

Function Scaffold protein that may play a role in cell adhesion, cell spreading and in the reorganization of the actin cytoskeleton. Plays a role in the regulation of cell proliferation. May act as a tumor suppressor. Inhibits tumor cell growth.

Tissue specificity Ubiquitous.

Sequence similarities Belongs to the prickle / espinas / testin family.

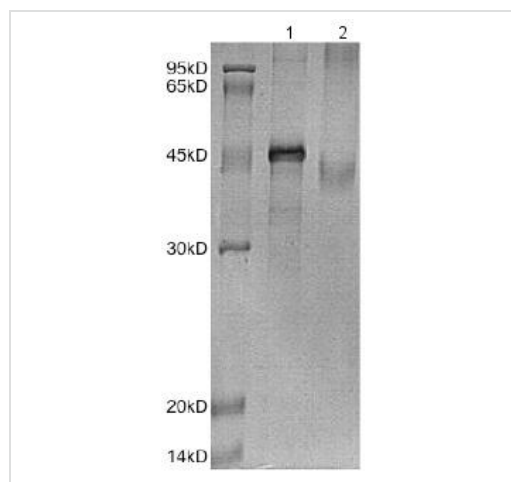
Contains 3 LIM zinc-binding domains.

Contains 1 PET domain.

Domain The N-terminal and the C-terminal halves of the protein can associate with each other, thereby hindering interactions with ZYX.

Cellular localization Cytoplasm. Cell junction > focal adhesion. Detected along actin stress fibers.

Images



SDS-PAGE analysis of ab172155 under Non reducing (Lane 1) or reducing conditions (Lane 2)

SDS-PAGE - Recombinant Human Testin protein (ab172155)

Please note: All products are "FOR RESEARCH USE ONLY. NOT FOR USE IN DIAGNOSTIC PROCEDURES"

Our Abpromise to you: Quality guaranteed and expert technical support

- Replacement or refund for products not performing as stated on the datasheet
- Valid for 12 months from date of delivery
- Response to your inquiry within 24 hours

- We provide support in Chinese, English, French, German, Japanese and Spanish
- Extensive multi-media technical resources to help you
- We investigate all quality concerns to ensure our products perform to the highest standards

If the product does not perform as described on this datasheet, we will offer a refund or replacement. For full details of the Abpromise, please visit <https://www.abcam.com/abpromise> or contact our technical team.

Terms and conditions

- Guarantee only valid for products bought direct from Abcam or one of our authorized distributors