

Recombinant Human THRAP5 protein ab132365

1 References 1 Image

Description

Product name	Recombinant Human THRAP5 protein
Expression system	Wheat germ
Accession	<u>Q9Y2X0</u>
Protein length	Full length protein
Animal free	No
Nature	Recombinant
Species	Human
Sequence	

MCDLRRPAAGGMMDLAYVCEWEKWSKSTHCPSVPLAC
AWSCRNLIAFTMD
LRSDDQDLTRMIHLDTEHPWDLHSIPSEHHEAITCLEWDQ
SGSRLLSAD
ADGQIKCWSMADHLANSWESSVGSLEGDPIVALSWLH
NGVKLALHVEKS
GASSFGEKFSRVKFSPSLTLFGGKPMEGWIAVTVSGLVT
VSLLKPSGQVL
TSTESLCRLRGRVALADIAFTGGGNMVATADGSSASPVQ
FYKVCVSVVS
EKCRIDTEILPSLFMRCTTDLNRKDKFPAITHLKFLARDMS
EQVLLCASS
QTSSIVECWSLRKEGLPVNNIFQQISPVVGDKQPTILKWRIL
SATNDLDR
VSAVALPKLPISLTNTDLKVASDTQFYPLGLALAFHDGS
VHIVHRLSLQ
TMAVFYSSAAPRPVDEPAMKRPRTAGPAVHLKAMQLSW
TSLALVGIDSHG
KLSVLRSPSMGHPLEVGLALRHLLFLLEYCMVTGYDWW
DILLHVQPSMV
QSLVEKLHEEYTRQTAALQQVLSTRILAMKASLCKLSPCT
VTRVCDYHTK
LFLIAISSTLKSLLRPHFLNTPDKSPGDRLTEICTKITDVIDIK
VMINLK
TEEFVLDMNTLQALQQLLQWVGDFVLYLLASLPNQGSLLR
PGHSFLRDGT
SLGMLRELMVIRWGLLKPSCLPVYTATSDTQDSMSLLF
RLLTKLWICF

PSTGPCSVVWLLGWQPLPGRDEGPASEPDEALVDECCL
LPSQLLIPSLDW
LPASDGLVSRLLQPKQPLRLQFGRAPTLPGSAATLQLDGL
ARAPGQPKIDH
LRRHLGACPTEECKACTRCGCVTMLKSPNRTTAVKQWE
QRWIKNCLCGG LWWRVPLSY

Predicted molecular weight	121 kDa including tags
Amino acids	1 to 860

Specifications

Our **Abpromise guarantee** covers the use of **ab132365** in the following tested applications.

The application notes include recommended starting dilutions; optimal dilutions/concentrations should be determined by the end user.

Applications	Western blot
	SDS-PAGE
	ELISA

Form	Liquid
-------------	--------

Additional notes

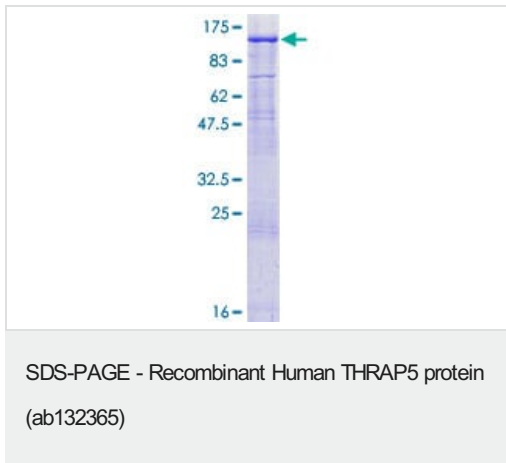
Preparation and Storage

Stability and Storage	Shipped on dry ice. Upon delivery aliquot and store at -80°C. Avoid freeze / thaw cycles. pH: 8.00 Constituents: 0.31% Glutathione, 0.79% Tris HCl
------------------------------	--

General Info

Function	Component of the Mediator complex, a coactivator involved in the regulated transcription of nearly all RNA polymerase II-dependent genes. Mediator functions as a bridge to convey information from gene-specific regulatory proteins to the basal RNA polymerase II transcription machinery. Mediator is recruited to promoters by direct interactions with regulatory proteins and serves as a scaffold for the assembly of a functional preinitiation complex with RNA polymerase II and the general transcription factors.
Sequence similarities	Belongs to the Mediator complex subunit 16 family. Contains 5 WD repeats.
Cellular localization	Nucleus.

Images



12.5% SDS-PAGE analysis of ab132365 stained with Coomassie Blue.

Please note: All products are "FOR RESEARCH USE ONLY. NOT FOR USE IN DIAGNOSTIC PROCEDURES"

Our Abpromise to you: Quality guaranteed and expert technical support

- Replacement or refund for products not performing as stated on the datasheet
- Valid for 12 months from date of delivery
- Response to your inquiry within 24 hours
- We provide support in Chinese, English, French, German, Japanese and Spanish
- Extensive multi-media technical resources to help you
- We investigate all quality concerns to ensure our products perform to the highest standards

If the product does not perform as described on this datasheet, we will offer a refund or replacement. For full details of the Abpromise, please visit <https://www.abcam.com/abpromise> or contact our technical team.

Terms and conditions

- Guarantee only valid for products bought direct from Abcam or one of our authorized distributors