

# Recombinant Human TLE2 protein ab159711

1 Image

### Description

---

<b>Product name</b>	Recombinant Human TLE2 protein
<b>Expression system</b>	Wheat germ
<b>Protein length</b>	Full length protein
<b>Animal free</b>	No
<b>Nature</b>	Recombinant
<b>Species</b>	Human

### Sequence

MYPQGRHPTPLQSGQPFKFSILEICDRIKEEFQFLQAAQYHS  
LKLECEKLA  
SEKTEMQRHYVMYYEMSYGLNIEMHKQAEIVKRLSGICAQII  
PFLTQEHQ  
QQVLQAVERAQVTVGELNSLIGQQQLQPLSHHAPPVPLTP  
RPAGLVGGSA  
TGLLALSGALAAQAQLAAAVKEDRAGVEAEGSRVERAPS  
RSASPSPPESL  
VEEERPSGPGGGGKQRADEKEPSGPYESDEDKSDYNLV  
VDEDQPSEPPSP  
ATTPCGKVPICIPARRDLVDSPASLASSLGSPLPRAKELIL  
NDLPASTPA  
SKSCDSSPPQDASTPGPSSASHLCQLAAKPAPSTDSVA  
LRSPLTLSSPFT  
TSFSLGSHSTLNGDLSVPSSYVSLHLSPQVSSSVVYGRS  
PVMAFESHPhL  
RGSSVSSSLPSIPGGKPAYSFHVSADGQMMPVPPFDAL  
VGAGIPRHARQ  
LHTLAHGEVVCAVTISGSTQHVTGGKGCVKVWDVGGQPG  
AKTPVAQLDCL  
NRDNYRSCKLLPDGRSLVGG EASTLSWDLAAPTPIKAE  
LTSSAPAC  
YALAVSPDAKVCFSCCSDGNIVVWDLQNQTMVRQFQGH  
TDGASCIDISDY  
GTRLWTGGLDNTVRCWDLREGRQLQQHDFSSQIFSLGHG  
PNQDWLAVGME  
SSNVEILHVRKPEKYQLHLHESCVLSLKFASCGRWVSTG  
KDNLLNAWRT  
PYGASIFQSKESSSVLSCDISRNNKYVTGSGDKKATVYEV

<b>Amino acids</b>	1 to 743
<b>Tags</b>	GST tag N-Terminus

### Specifications

---

Our **Abpromise guarantee** covers the use of **ab159711** in the following tested applications.

The application notes include recommended starting dilutions; optimal dilutions/concentrations should be determined by the end user.

<b>Applications</b>	ELISA Western blot
---------------------	-----------------------

<b>Form</b>	Liquid
-------------	--------

### Additional notes

### Preparation and Storage

---

<b>Stability and Storage</b>	Shipped on dry ice. Upon delivery aliquot and store at -80°C. Avoid freeze / thaw cycles. pH: 8.00 Constituents: 0.31% Glutathione, 0.79% Tris HCl
------------------------------	--

### General Info

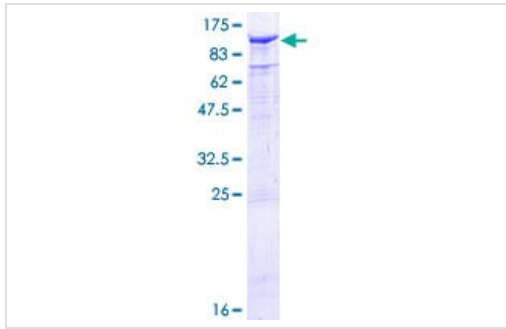
---

<b>Function</b>	Transcriptional corepressor that binds to a number of transcription factors. Inhibits the transcriptional activation mediated by CTNNB1 and TCF family members in Wnt signaling. The effects of full-length TLE family members may be modulated by association with dominant-negative AES.
<b>Tissue specificity</b>	In all tissues examined, mostly in heart, brain, and muscle.
<b>Sequence similarities</b>	Belongs to the WD repeat Groucho/TLE family. Contains 6 WD repeats.
<b>Cellular localization</b>	Nucleus.

---

### Images

---



ab159711 on a 12.5% SDS-PAGE stained with Coomassie Blue.

SDS-PAGE - Recombinant Human TLE2 protein  
(ab159711)

**Please note:** All products are "FOR RESEARCH USE ONLY. NOT FOR USE IN DIAGNOSTIC PROCEDURES"

### Our Abpromise to you: Quality guaranteed and expert technical support

---

- Replacement or refund for products not performing as stated on the datasheet
- Valid for 12 months from date of delivery
- Response to your inquiry within 24 hours
- We provide support in Chinese, English, French, German, Japanese and Spanish
- Extensive multi-media technical resources to help you
- We investigate all quality concerns to ensure our products perform to the highest standards

If the product does not perform as described on this datasheet, we will offer a refund or replacement. For full details of the Abpromise, please visit <https://www.abcam.com/abpromise> or contact our technical team.

### Terms and conditions

---

- Guarantee only valid for products bought direct from Abcam or one of our authorized distributors