

Product datasheet

Recombinant Human TLR7 protein ab153341

1 Image

Description

Product name	Recombinant Human TLR7 protein
Purity	>= 80 % Purified via GST Tag. Glutathione Sepharose
Expression system	Wheat germ
Accession	<u>Q9NYK1</u>
Protein length	Protein fragment
Animal free	No
Nature	Recombinant
Species	Human
Sequence	ARWFPKTLPCDVTLDVPKNHVVDCTDKHLTEIPGGIPTNT TNLTLTINH IPDISPASFHRLDHLVEIDFRCNCVPIPLGSKNNMCIKRLQIK PRSFSGL
Predicted molecular weight	37 kDa including tags
Amino acids	27 to 126
Tags	GST tag N-Terminus

Specifications

Our **Abpromise guarantee** covers the use of **ab153341** in the following tested applications.

The application notes include recommended starting dilutions; optimal dilutions/concentrations should be determined by the end user.

Applications	ELISA Western blot
Form	Liquid

Additional notes

Preparation and Storage

Stability and Storage	Shipped on dry ice. Upon delivery aliquot and store at -80°C. Avoid freeze / thaw cycles.
------------------------------	---

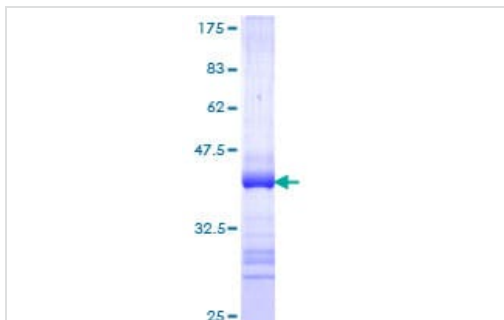
pH: 8.00

Constituents: 0.31% Glutathione, 0.79% Tris HCl

General Info

Function	Key component of innate and adaptive immunity. TLRs (Toll-like receptors) control host immune response against pathogens through recognition of molecular patterns specific of microorganisms. TLR7 is a nucleotide-sensing TLR which is activated by single-stranded RNA. Acts via MYD88 and TRAF6, leading to NF-kappa-B activation, cytokine secretion and the inflammatory response.
Tissue specificity	Detected in brain, placenta, spleen, stomach, small intestine, lung and in plasmacytoid pre-dendritic cells.
Sequence similarities	Belongs to the Toll-like receptor family. Contains 27 LRR (leucine-rich) repeats. Contains 1 TIR domain.
Cellular localization	Endoplasmic reticulum membrane. Endosome. Lysosome. Cytoplasmic vesicle > phagosome. Relocalizes from endoplasmic reticulum to endosome and lysosome upon stimulation with agonist.

Images



ab153341 on a 12.5% SDS-PAGE stained with Coomassie Blue.

SDS-PAGE - Recombinant Human TLR7 protein
(ab153341)

Please note: All products are "FOR RESEARCH USE ONLY. NOT FOR USE IN DIAGNOSTIC PROCEDURES"

Our Abpromise to you: Quality guaranteed and expert technical support

- Replacement or refund for products not performing as stated on the datasheet
- Valid for 12 months from date of delivery
- Response to your inquiry within 24 hours
- We provide support in Chinese, English, French, German, Japanese and Spanish
- Extensive multi-media technical resources to help you
- We investigate all quality concerns to ensure our products perform to the highest standards

If the product does not perform as described on this datasheet, we will offer a refund or replacement. For full details of the Abpromise, please visit <https://www.abcam.com/abpromise> or contact our technical team.

Terms and conditions

- Guarantee only valid for products bought direct from Abcam or one of our authorized distributors