

Product datasheet

Recombinant Human Tmem27 protein - BSA and Azide free ab178462

[1 Image](#)

Description

Product name	Recombinant Human Tmem27 protein - BSA and Azide free		
Purity	> 95 % Densitometry.		
Endotoxin level	< 1.000 Eu/μg		
Expression system	Escherichia coli		
Accession	<u>Q9HBJ8</u>		
Protein length	Protein fragment		
Animal free	No		
Carrier free	Yes		
Nature	Recombinant		
Species	Human		
Sequence	MKHHHHHHASELCQPGAENAFKVRLSIRTALGDKAYAWD TNEEYLFKAMV AFSMRKVPNREATEISHVLLCNVTQRVSFWFVVTDP SKN HTLPAVEVQSA IRMNKNRINNAFFLNDQTLEFLKIPSTLAPPMDPSVP		
Predicted molecular weight	16 kDa including tags		
Amino acids	15 to 141		
Tags	His tag N-Terminus		
Additional sequence information	Extracellular domain		
Description	Recombinant Human Tmem27 protein (BSA and azide free)		

Specifications

Our [**Abpromise guarantee**](#) covers the use of **ab178462** in the following tested applications.

The application notes include recommended starting dilutions; optimal dilutions/concentrations should be determined by the end user.

Applications	Western blot
	ELISA
	SDS-PAGE

	Mass Spectrometry
Mass spectrometry	LC-MS/MS
Form	Lyophilized

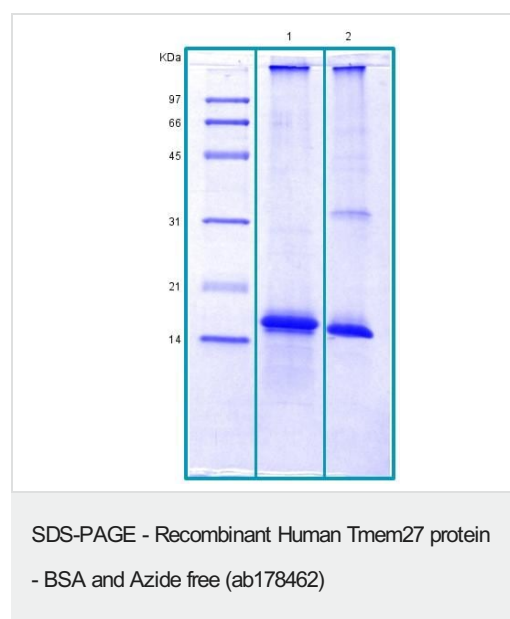
Preparation and Storage

Stability and Storage	Shipped at 4°C. Store at -80°C. Avoid freeze / thaw cycle. Constituent: 2.5% Acetate buffer
Reconstitution	Add 200 µl of deionized water to prepare a working stock solution of 0.5 mg/mL and let the lyophilized pellet dissolve completely. For conversion into higher pH value, we recommend intensive dilution by relevant buffer to a concentration of 10µg/mL. In higher concentrations the solubility of this antigen is limited. Product is not sterile! Please filter the product by an appropriate sterile filter before using it in the cell culture.

General Info

Function	Regulator of SNARE complex function. Stimulator of beta cell replication.
Tissue specificity	Kidney; collecting ducts. Pancreas; beta cells of islets.
Sequence similarities	Belongs to the TMEM27 family.
Post-translational modifications	Glycosylated. The extracellular domain is cleaved and released from the cell membrane of pancreatic beta cells.
Cellular localization	Membrane.

Images



SDS-PAGE analysis of ab178462,

1) Reduced and boiled sample, 2.5 µg/lane

2) Non-reduced and non-boiled sample, 2.5 µg/lane.

Please note: All products are "FOR RESEARCH USE ONLY. NOT FOR USE IN DIAGNOSTIC PROCEDURES"

Our Abpromise to you: Quality guaranteed and expert technical support

- Replacement or refund for products not performing as stated on the datasheet
- Valid for 12 months from date of delivery
- Response to your inquiry within 24 hours

- We provide support in Chinese, English, French, German, Japanese and Spanish
- Extensive multi-media technical resources to help you
- We investigate all quality concerns to ensure our products perform to the highest standards

If the product does not perform as described on this datasheet, we will offer a refund or replacement. For full details of the Abpromise, please visit <https://www.abcam.com/abpromise> or contact our technical team.

Terms and conditions

- Guarantee only valid for products bought direct from Abcam or one of our authorized distributors