

Recombinant Human TNNI3K protein ab162409

1 Image

Description

Product name	Recombinant Human TNNI3K protein
Expression system	Wheat germ
Protein length	Full length protein
Animal free	No
Nature	Recombinant
Species	Human
Sequence	MAAARDPPEVSLREATQRKLRRFSELRGKLVARGEFWDI VAITAADEKQE LAYNQQLSEKLKRKELPLGVQYHVFVDPAGAKIGNGGSTL CALQCLEKLY GDKWNSFTILLHSDEWKKKVSESYVITIERLEDDLQIKEKE LTELRNIF GSDEAFSKVNLNYRTENGLSLLHLCCICGGKKSHIRTLMLK GLRPSRLTR NGFTALHLAVYKDNAELITSL LHSGADVQQVGYGGLTALHI ATIAGHLEA ADVLLQHGANVNIQDAVFFTPLHIAAYGHEQVTRLLLKFG ADVNVSGEV GDRPLHLASAKGFLNIAKLLMEEGSKADVNAQDNEDHVP LHFCSRFGHHD MKYLLQSDLEVQPHVVNIYGDTPHLACYNKGFEVAKEIIQI SGTESLT KENIFSETAFHSACTYGKSIDLVKFLLDQNVININHQGRDGH TGLHSACY HGHIRLVQFLLDNGADMNLVACDPSRSSGEKDEQTCLM WAYEKGHDAVT LLKHYKRPQDELP CNEYSQPGDGSYVSVPSPLGKIKSM TKEKADILLR AGLP SHFHLQLSEIEFHEIIGSGSFGKVYKGRCRNKIVA IKR YRANTYCS KSDVDMFCREVSILCQLNHPCVIQFVGACLN DPSQFAVT QYSGGSLFS LLHEQKRILD LQSKLIIAVDVAKGMEYLHNLTP I IHRDLNSH NILLYED GHAVVADFGESRFLQSLDEDNMTKQPGNLLWMAPEVFT

QCTRYTIKADV
SYALCLWEILTGEIPFAHLKPAAAAADMA YHHRPPIGYSIP
KPISSLLI
RGWNACPEAKSRPSHYVSSVYTETLKKKNEDRFGMWIE
YLRR

Amino acids	1 to 843
Tags	GST tag N-Terminus

Specifications

Our **Abpromise guarantee** covers the use of **ab162409** in the following tested applications.

The application notes include recommended starting dilutions; optimal dilutions/concentrations should be determined by the end user.

Applications	ELISA Western blot
Form	Liquid
Additional notes	

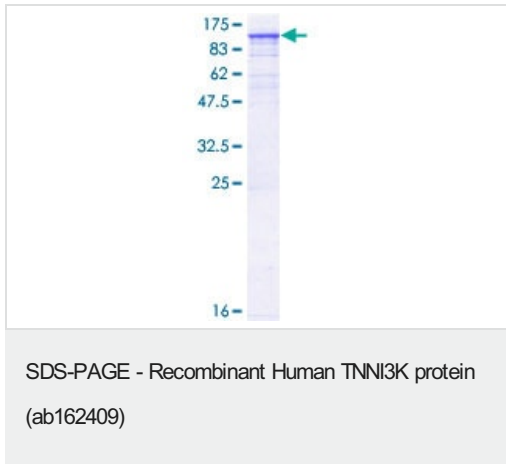
Preparation and Storage

Stability and Storage	Shipped on dry ice. Upon delivery aliquot and store at -80°C. Avoid freeze / thaw cycles. pH: 8.00 Constituents: 0.31% Glutathione, 0.79% Tris HCl
------------------------------	--

General Info

Function	May play a role in cardiac physiology.
Tissue specificity	Highly expressed in both adult and fetal heart.
Sequence similarities	Belongs to the protein kinase superfamily. TKL Ser/Thr protein kinase family. MAP kinase kinase kinase subfamily. Contains 10 ANK repeats. Contains 1 protein kinase domain.
Post-translational modifications	Autophosphorylated.
Cellular localization	Nucleus. Cytoplasm. Expressed at lower levels in the cytoplasm.

Images



ab162409 on a 12.5% SDS-PAGE stained with Coomassie Blue.

Please note: All products are "FOR RESEARCH USE ONLY. NOT FOR USE IN DIAGNOSTIC PROCEDURES"

Our Abpromise to you: Quality guaranteed and expert technical support

- Replacement or refund for products not performing as stated on the datasheet
- Valid for 12 months from date of delivery
- Response to your inquiry within 24 hours
- We provide support in Chinese, English, French, German, Japanese and Spanish
- Extensive multi-media technical resources to help you
- We investigate all quality concerns to ensure our products perform to the highest standards

If the product does not perform as described on this datasheet, we will offer a refund or replacement. For full details of the Abpromise, please visit <https://www.abcam.com/abpromise> or contact our technical team.

Terms and conditions

- Guarantee only valid for products bought direct from Abcam or one of our authorized distributors