

## Product datasheet

# Recombinant Human TOX protein ab160644

1 Image

### Description

---

<b>Product name</b>	Recombinant Human TOX protein
<b>Expression system</b>	Wheat germ
<b>Protein length</b>	Full length protein
<b>Animal free</b>	No
<b>Nature</b>	Recombinant
<b>Species</b>	Human
<b>Sequence</b>	<pre>MDVRFYPPVAQPAAAPDAPCLGSPCLDPYYCNKFDGE NMYMSMTEPSQD YVPASQSYGPSLESEDFNIPPITPPSLPDHSLVHLNEVES GYHSLCHPM NHNGLLPFHPQNMDLPEITVSNMLGQDGTLLSNSISVMPDI RNPEGTQYS SHPQMAAMRPRGQPADIRQQPGMMPHGQLTTINQSQLSA QLGLNMGGSNV PHNSPSPPGSKSATPSPSSSVHEDEGDDTSKINGGEKRP ASDMGKKPKTP KKKKKKDPNEPQKPVSAALFFRDTQAAIKQNP NATFG EVSKIVASMWD GLGEEQKQVYKKKTEAAKKEYLKQLAAYRASLVSKSYSE PVDVKTSQPPQ LINSKPSVFHGPSQAHSALYLSSH YHQQPGMNPHTAMH PSLPRNIAPKP NNQMPVTVSIANMAVSPPPPLQISPLHQHLNMQQHQPLT MQQPLGNQLP MQVQSALHSPTMQQGF TLQPDYQTIINPTSTAAQVVTQAM EYVRSGCRNP PPQPVDWNNDYCSSGGMQRDKALYLT</pre>
<b>Amino acids</b>	1 to 526
<b>Tags</b>	GST tag N-Terminus

### Specifications

---

Our **Abpromise guarantee** covers the use of **ab160644** in the following tested applications.

The application notes include recommended starting dilutions; optimal dilutions/concentrations should be determined by the end user.

<b>Applications</b>	ELISA Western blot
<b>Form</b>	Liquid
<b>Additional notes</b>	

---

## Preparation and Storage

<b>Stability and Storage</b>	Shipped on dry ice. Upon delivery aliquot and store at -80°C. Avoid freeze / thaw cycles. pH: 8.00 Constituents: 0.31% Glutathione, 0.79% Tris HCl
------------------------------	--

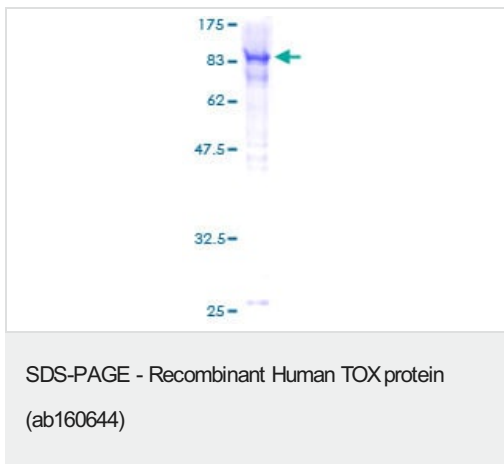
---

## General Info

<b>Function</b>	May play a role in regulating T-cell development.
<b>Sequence similarities</b>	Contains 1 HMG box DNA-binding domain.
<b>Cellular localization</b>	Nucleus.

---

## Images



ab160644 on a 12.5% SDS-PAGE stained with Coomassie Blue.

**Please note:** All products are "FOR RESEARCH USE ONLY. NOT FOR USE IN DIAGNOSTIC PROCEDURES"

---

## Our Promise to you: Quality guaranteed and expert technical support

- Replacement or refund for products not performing as stated on the datasheet
- Valid for 12 months from date of delivery
- Response to your inquiry within 24 hours
- We provide support in Chinese, English, French, German, Japanese and Spanish
- Extensive multi-media technical resources to help you
- We investigate all quality concerns to ensure our products perform to the highest standards

If the product does not perform as described on this datasheet, we will offer a refund or replacement. For full details of the Abpromise, please visit <https://www.abcam.com/abpromise> or contact our technical team.

### **Terms and conditions**

---

- Guarantee only valid for products bought direct from Abcam or one of our authorized distributors