

Recombinant Human TPOR/MPL protein (His tag)
ab235820

1 Image

Description

| | | | |
|---------------------------------|---|--|--|
| Product name | Recombinant Human TPOR/MPL protein (His tag) | | |
| Purity | > 90 % SDS-PAGE. | | |
| Expression system | Escherichia coli | | |
| Accession | <u>P40238</u> | | |
| Protein length | Protein fragment | | |
| Animal free | No | | |
| Nature | Recombinant | | |
| Species | Human | | |
| Sequence | QDVSLLASDSEPLKCFSRTEFDTLCFWDEEEAAPSGTYQ LLYAYPREKPR ACPLSSQSMPHFGTRYVCQFPDQEEVRLFFPLHLWVKN VFLNQTRTQRVL FVDSVGLPAPPSIIKAMGGSQPGELQISWEEPAPEISDFLR YELRYGPRD PKNSTGPTVIQLIATETCCPALQRPHSASALDQSPCAQPT MPWQDGPKQT SPSREASALTAEGGSCLISGLQPGNSYWLQLRSEPDGISL GGSWGWSWLP VTVDLPGDAVALGLQCFTLDLKNVTCQWQQQDHASSQG FFYHSRARCCPR DRYPWENCEEEEEKTNPGLQTPQFSRCHFCSRNDSEIIHLV EVTTAPGTV HSYLGSPFWIHQAVRLPTPNLHWREISSGHLELEWQHPSS WAAQETCYQL RYTGEGHQDWKVLPPPLGARGGTLELRPRSRYRLQLRAR LNGPTYQGPWS SWSDPTRVETATETAW | | |
| Predicted molecular weight | 57 kDa including tags | | |
| Amino acids | 26 to 491 | | |
| Tags | His tag N-Terminus | | |
| Additional sequence information | Extracellular domain. | | |

Specifications

Our **Abpromise guarantee** covers the use of **ab235820** in the following tested applications.

The application notes include recommended starting dilutions; optimal dilutions/concentrations should be determined by the end user.

| | |
|-------------------------|--|
| Applications | SDS-PAGE |
| Form | Liquid |
| Additional notes | This product was previously labelled as TPOR |

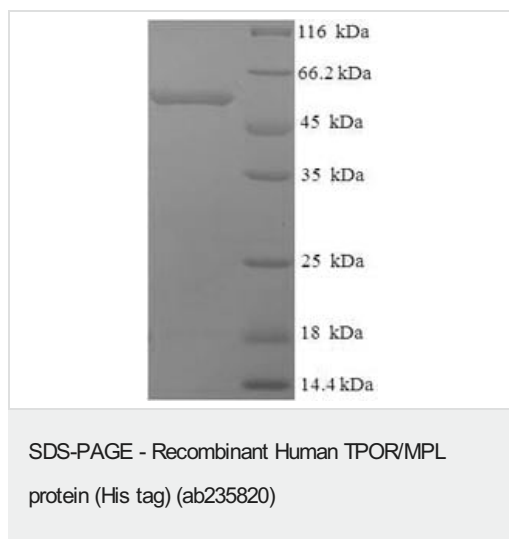
Preparation and Storage

| | |
|------------------------------|---|
| Stability and Storage | Shipped at 4°C. Store at -20°C or -80°C. Avoid freeze / thaw cycle. pH: 7.2 Constituents: Tris buffer, 50% Glycerol (glycerin, glycerine) |
|------------------------------|---|

General Info

| | |
|-------------------------------|---|
| Function | Receptor for thrombopoietin. May represent a regulatory molecule specific for TPO-R-dependent immune responses. |
| Tissue specificity | Expressed at a low level in a large number of cells of hematopoietic origin. Isoform 1 and isoform 2 are always found to be coexpressed. |
| Involvement in disease | Defects in MPL are a cause of congenital amegakaryocytic thrombocytopenia (CAMT) [MIM:604498]. CAMT is a disease characterized by isolated thrombocytopenia and megakaryocytopenia with no physical anomalies. |
| Sequence similarities | Belongs to the type I cytokine receptor family. Type 1 subfamily. Contains 2 fibronectin type-III domains. |
| Domain | The WSXWS motif appears to be necessary for proper protein folding and thereby efficient intracellular transport and cell-surface receptor binding. The box 1 motif is required for JAK interaction and/or activation. |
| Cellular localization | Membrane. |

Images



(Tris-Glycine gel) Discontinuous SDS-PAGE (reduced) analysis with 5% enrichment gel and 15% separation gel of ab235820.

Please note: All products are "FOR RESEARCH USE ONLY. NOT FOR USE IN DIAGNOSTIC PROCEDURES"

Our Abpromise to you: Quality guaranteed and expert technical support

- Replacement or refund for products not performing as stated on the datasheet
- Valid for 12 months from date of delivery
- Response to your inquiry within 24 hours
- We provide support in Chinese, English, French, German, Japanese and Spanish
- Extensive multi-media technical resources to help you
- We investigate all quality concerns to ensure our products perform to the highest standards

If the product does not perform as described on this datasheet, we will offer a refund or replacement. For full details of the Abpromise, please visit <https://www.abcam.com/abpromise> or contact our technical team.

Terms and conditions

- Guarantee only valid for products bought direct from Abcam or one of our authorized distributors