

## Product datasheet

# Recombinant Human TRAM1/TRAM protein ab161660

1 Image

### Description

<b>Product name</b>	Recombinant Human TRAM1/TRAM protein	
<b>Expression system</b>	Wheat germ	
<b>Accession</b>	<b><u>Q15629</u></b>	
<b>Protein length</b>	Full length protein	
<b>Animal free</b>	No	
<b>Nature</b>	Recombinant	
<b>Species</b>	Human	
<b>Sequence</b>	MAIRKKSTKSPPVLSHEFVLQNHADIVSCVAMVFLLGLMF EITAKASIF VTLQYNVTLPATEEQATESVSLYYYGIKDLATVFFYMLVAIII HAVIQEY MLDKINRRMHFSKTKHSKFNESGQLSAFYLFACVWGTFILI SENYISDPT ILWRAYPHNLMTFQMKFFYISQLAYWLHAFPELYFQKTKKE DIPRQLVYI GLYLFHAGAYLLNHLGLVLLVLHYFVEFLFHISRLFYFSN EKYQKGF SLWAVLFLVGRLLTLILSVLTVGFGLARAENQKLDSTGNF NVLAVRIAV LASICVTQAFMMWKFINFQLRRWREHSFQAPAVKKKPT VTKGRSSKKGTEENGVNGLTSTNVADSPRNKKEKSS	
<b>Amino acids</b>	1 to 374	
<b>Tags</b>	GST tag N-Terminus	

### Specifications

Our **Abpromise guarantee** covers the use of **ab161660** in the following tested applications.

The application notes include recommended starting dilutions; optimal dilutions/concentrations should be determined by the end user.

<b>Applications</b>	ELISA
	Western blot
<b>Form</b>	Liquid

### Additional notes

## Preparation and Storage

---

### Stability and Storage

Shipped on dry ice. Upon delivery aliquot and store at -80°C. Avoid freeze / thaw cycles.

pH: 8.00

Constituents: 0.31% Glutathione, 0.79% Tris HCl

## General Info

---

### Relevance

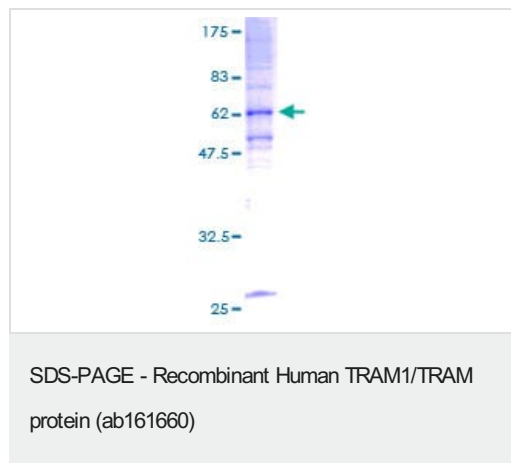
Function: Stimulatory or required for the translocation of secretory proteins across the ER membrane. Similarity: Belongs to the TRAM family. Contains 1 TLC (TRAM/LAG1/CLN8) domain.

### Cellular localization

Endoplasmic reticulum membrane; Multipass membrane protein

## Images

---



ab161660 on a 12.5% SDS-PAGE stained with Coomassie Blue.

**Please note:** All products are "FOR RESEARCH USE ONLY. NOT FOR USE IN DIAGNOSTIC PROCEDURES"

## Our Abpromise to you: Quality guaranteed and expert technical support

---

- Replacement or refund for products not performing as stated on the datasheet
- Valid for 12 months from date of delivery
- Response to your inquiry within 24 hours
- We provide support in Chinese, English, French, German, Japanese and Spanish
- Extensive multi-media technical resources to help you
- We investigate all quality concerns to ensure our products perform to the highest standards

If the product does not perform as described on this datasheet, we will offer a refund or replacement. For full details of the Abpromise, please visit <https://www.abcam.com/abpromise> or contact our technical team.

## Terms and conditions

---

- Guarantee only valid for products bought direct from Abcam or one of our authorized distributors