

## Product datasheet

# Recombinant Human Transglutaminase 5/TGM5 protein ab160436

[1 Image](#)

### Description

---

<b>Product name</b>	Recombinant Human Transglutaminase 5/TGM5 protein
<b>Expression system</b>	Wheat germ
<b>Protein length</b>	Protein fragment
<b>Animal free</b>	No
<b>Nature</b>	Recombinant
<b>Species</b>	Human
<b>Sequence</b>	FKLLDPPNMGQDICFVLLALNMSSQFKDLKVNLSAQSLH DGSPLSPFWQ DTAFITLSPKEAKTYPCKISYSQYSQYLSTDKLIRISALGEEK SSPEKIL
<b>Amino acids</b>	511 to 610
<b>Tags</b>	GST tag N-Terminus

### Specifications

---

Our **Abpromise guarantee** covers the use of **ab160436** in the following tested applications.

The application notes include recommended starting dilutions; optimal dilutions/concentrations should be determined by the end user.

<b>Applications</b>	Western blot ELISA
<b>Form</b>	Liquid
<b>Additional notes</b>	This product was previously labelled as Transglutaminase 5.

### Preparation and Storage

---

<b>Stability and Storage</b>	Shipped on dry ice. Upon delivery aliquot and store at -80°C. Avoid freeze / thaw cycles. pH: 8.00 Constituents: 0.31% Glutathione, 0.79% Tris HCl
------------------------------	--

## General Info

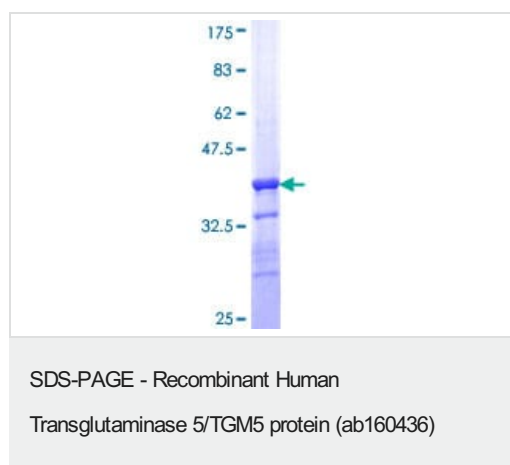
---

<b>Function</b>	Catalyzes the cross-linking of proteins and the conjugation of polyamines to proteins. Contributes to the formation of the cornified cell envelope of keratinocytes.
<b>Tissue specificity</b>	Expressed in foreskin keratinocytes.
<b>Involvement in disease</b>	Defects in TGM5 are a cause of peeling skin syndrome type A (APSS) [MIM:609796]. A non-inflammatory form of peeling skin syndrome, a genodermatosis characterized by the continuous shedding of the outer layers of the epidermis. In APSS patients, skin peeling is strictly limited to the dorsa of the hands and feet, and it is accompanied by painless erythema and spontaneous non-scarring healing. Ultrastructural and histological analysis shows a level of blistering high in the epidermis at the stratum granulosum-stratum corneum junction.
<b>Sequence similarities</b>	Belongs to the transglutaminase superfamily. Transglutaminase family.
<b>Cellular localization</b>	Cytoplasm. Associated with intermediate filaments.

---

## Images

---



ab160436 on a 12.5% SDS-PAGE stained with Coomassie Blue.

**Please note:** All products are "FOR RESEARCH USE ONLY. NOT FOR USE IN DIAGNOSTIC PROCEDURES"

## Our Abpromise to you: Quality guaranteed and expert technical support

---

- Replacement or refund for products not performing as stated on the datasheet
- Valid for 12 months from date of delivery
- Response to your inquiry within 24 hours
- We provide support in Chinese, English, French, German, Japanese and Spanish
- Extensive multi-media technical resources to help you
- We investigate all quality concerns to ensure our products perform to the highest standards

If the product does not perform as described on this datasheet, we will offer a refund or replacement. For full details of the Abpromise, please visit <https://www.abcam.com/abpromise> or contact our technical team.

## Terms and conditions

---

- Guarantee only valid for products bought direct from Abcam or one of our authorized distributors