

Recombinant Human TREX1 protein ab161394

1 Image

Description	
Product name	Recombinant Human TREX1 protein
Expression system	Wheat germ
Accession	<u>Q9NSU2-3</u>
Protein length	Full length protein
Animal free	No
Nature	Recombinant
Species	Human
Sequence	MQTLIFFDMEATGLPFSQPKVTELCLLAVHRCALESPPTS QGPPPTVPPP PRVVDKLSLCVAPGKACSPAASEITGLSTAVLAAHGRQC FDDNLANLLLA FLRRQPQPWCLVAHNGDRYDFPLLQAEAMLGLTSALDG AFCVDSITALK ALERASSPSEHGPRKSYSLSIYTRLYGQSPPDSHTAEGD VLALLSICQW RPQALLRWVDAHARPFGTIRPMYGV TASARTKPRPSAVTT TAHLATTRNT SPSLRESRGTKDLPPVKDPGALSREGLLAPLGLLAILTLAV ATLYGLSLA TPGE
Amino acids	1 to 304
Tags	GST tag N-Terminus

Specifications	
Our <b>Abpromise guarantee</b> covers the use of <b>ab161394</b> in the following tested applications.	
The application notes include recommended starting dilutions; optimal dilutions/concentrations should be determined by the end user.	
Applications	ELISA Western blot
Form	Liquid
Additional notes	

## Preparation and Storage

---

### Stability and Storage

Shipped on dry ice. Upon delivery aliquot and store at -80°C. Avoid freeze / thaw cycles.

pH: 8.00

Constituents: 0.31% Glutathione, 0.79% Tris HCl

## General Info

---

### Relevance

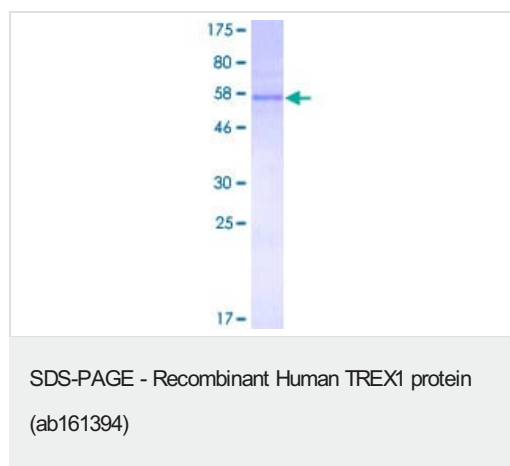
TREX1 is the major 3'→5' DNA exonuclease in human cells. The protein is a non processive exonuclease that may serve a proofreading function for a human DNA polymerase. It is also a component of the SET complex, and acts to rapidly degrade 3' ends of nicked DNA during granzyme A mediated cell death. Mutations in this gene result in Aicardi Goutieres syndrome, chilblain lupus, and Cree encephalitis. Multiple transcript variants encoding different isoforms have been found for this gene.

### Cellular localization

Cytoplasmic, Endoplasmic reticulum and Nuclear

## Images

---



ab161394 on a 12.5% SDS-PAGE stained with Coomassie Blue.

**Please note:** All products are "FOR RESEARCH USE ONLY. NOT FOR USE IN DIAGNOSTIC PROCEDURES"

## Our Abpromise to you: Quality guaranteed and expert technical support

---

- Replacement or refund for products not performing as stated on the datasheet
- Valid for 12 months from date of delivery
- Response to your inquiry within 24 hours
- We provide support in Chinese, English, French, German, Japanese and Spanish
- Extensive multi-media technical resources to help you
- We investigate all quality concerns to ensure our products perform to the highest standards

If the product does not perform as described on this datasheet, we will offer a refund or replacement. For full details of the Abpromise, please visit <https://www.abcam.com/abpromise> or contact our technical team.

## Terms and conditions

---

- Guarantee only valid for products bought direct from Abcam or one of our authorized distributors