

## Product datasheet

# Recombinant human TrkC protein ab85274

5 Images

### Description

<b>Product name</b>	Recombinant human TrkC protein
<b>Biological activity</b>	The Specific activity of ab85274 was determined to be 24 nmol/min/mg.
<b>Purity</b>	> 80 % Densitometry. Affinity purified.
<b>Expression system</b>	Baculovirus infected Sf9 cells
<b>Protein length</b>	Protein fragment
<b>Animal free</b>	No
<b>Nature</b>	Recombinant
<b>Species</b>	Human
<b>Amino acids</b>	507 to 839

### Specifications

Our **Abpromise guarantee** covers the use of **ab85274** in the following tested applications.

The application notes include recommended starting dilutions; optimal dilutions/concentrations should be determined by the end user.

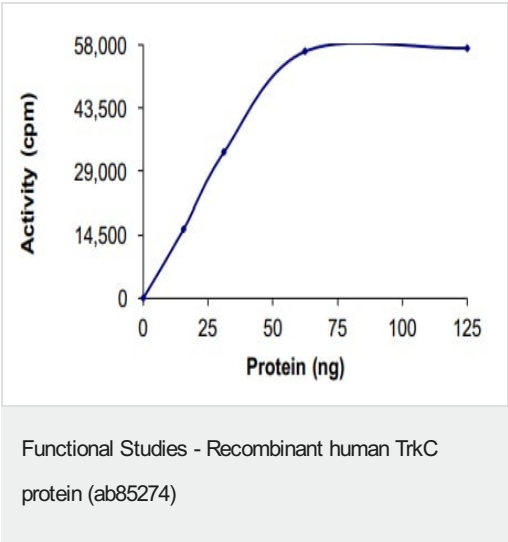
<b>Applications</b>	Functional Studies Western blot
<b>Form</b>	Liquid
<b>Additional notes</b>	<b><u>ab204877</u></b> (Poly (4:1 Glu, Tyr) peptide) can be utilized as a substrate for assessing kinase activity

### Preparation and Storage

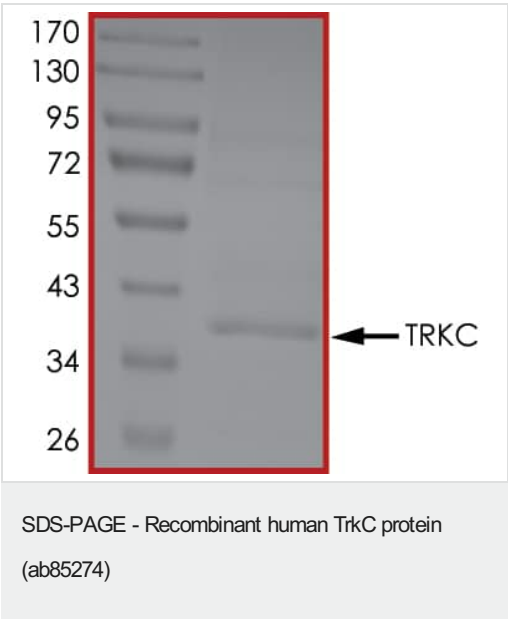
<b>Stability and Storage</b>	Shipped on dry ice. Upon delivery aliquot and store at -80°C. Avoid freeze / thaw cycles. pH: 7.00 Preservative: 1.02% Imidazole Constituents: 0.00174% PMSF, 0.82% Sodium phosphate, 0.0308% DTT, 25% Glycerol (glycerin, glycerine), 1.74% Sodium chloride This product is an active protein and may elicit a biological response in vivo, handle with caution.
------------------------------	---

<b>General Info</b>	
<b>Function</b>	Receptor for neurotrophin-3 (NT-3). This is a tyrosine-protein kinase receptor. Known substrates for the trk receptors are SHC1, PI-3 kinase, and PLCG1. The different isoforms do not have identical signaling properties.
<b>Tissue specificity</b>	Widely expressed but mainly in nervous tissue. Isoform B is expressed at higher levels in adult brain than in fetal brain.
<b>Sequence similarities</b>	<p>Belongs to the protein kinase superfamily. Tyr protein kinase family. Insulin receptor subfamily.</p> <p>Contains 2 Ig-like C2-type (immunoglobulin-like) domains.</p> <p>Contains 2 LRR (leucine-rich) repeats.</p> <p>Contains 1 LRRCT domain.</p> <p>Contains 1 protein kinase domain.</p>
<b>Post-translational modifications</b>	Ligand-mediated auto-phosphorylation.
<b>Cellular localization</b>	Membrane.

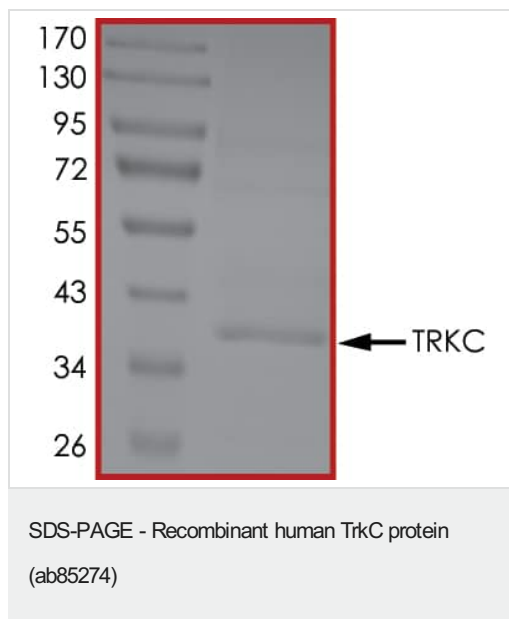
Images



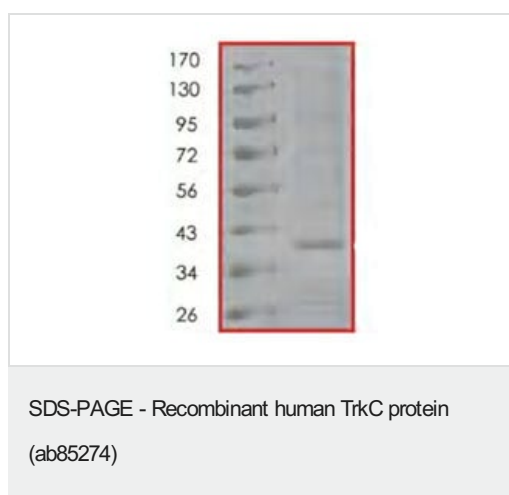
The specific activity of TrkC (ab85274) was determined to be 28 nmol/min/mg as per activity assay protocol



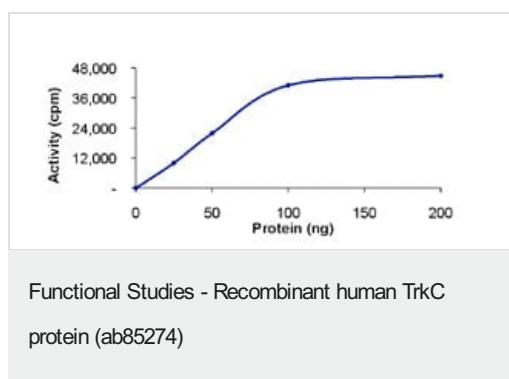
SDS PAGE analysis of ab85274



SDS PAGE analysis of ab85274



SDS-PAGE showing ab85274 at approximately 38kDa.



The Specific activity of ab85274 was determined to be 24 nmol/min/mg.

**Please note:** All products are "FOR RESEARCH USE ONLY. NOT FOR USE IN DIAGNOSTIC PROCEDURES"

### Our Abpromise to you: Quality guaranteed and expert technical support

- Replacement or refund for products not performing as stated on the datasheet
- Valid for 12 months from date of delivery

- Response to your inquiry within 24 hours
- We provide support in Chinese, English, French, German, Japanese and Spanish
- Extensive multi-media technical resources to help you
- We investigate all quality concerns to ensure our products perform to the highest standards

If the product does not perform as described on this datasheet, we will offer a refund or replacement. For full details of the Abpromise, please visit <https://www.abcam.com/abpromise> or contact our technical team.

#### **Terms and conditions**

---

- Guarantee only valid for products bought direct from Abcam or one of our authorized distributors