

Product datasheet

Recombinant Human Tryptophanyl tRNA synthetase/WRS protein ab99263

1 Image

Description

Product name	Recombinant Human Tryptophanyl tRNA synthetase/WRS protein
Purity	> 90 % SDS-PAGE. ab99263 is purified using conventional chromatography techniques.
Expression system	Escherichia coli
Accession	<u>P23381</u>
Protein length	Full length protein
Animal free	No
Nature	Recombinant
Species	Human
Sequence	<p>MGSSHHHHHHSSGLVPRGSHMPNSEPASLLELFNSIAT QGELVRSLKAGN ASKDEIDSAVKMLVSLKMSYKAAAGEDYKADCPPGNPAP TSNHGPDATEA EEDFVDPWTVQTSSAKGIDYDKLMVRFGSSKIDKELINRIER ATGQRPHH FLRRGIFFSHRDMNQVLDAYENKKPFYLYTGRGPSSEAMH VGHLIPFIFT KWLQDVFNVPLVIQMTDDEKYLWKDLTLDQAYS YAVENA KDIACGFDIN KTFIFSDLDYMGMS SGFYKNVVKIQKHVTFNQVKGIFGFTD SDCIGKISF PAIQAAPSF SNSFPQIFRDRTDIQCLIPCAIDQDPYFRMTRD VAPRIGYP KPALLHSTFFPALQGAQTKMSASDPNSSIFLTD TAKQIKTK VNKHAFSGG RDTIEEHRQFGGNCDVDVSFMYLTFFLEDDDKLEQIRKDY TSGAMLTGEL KKALIEVLQPLIAEHQARRKEVTDEIVKEFMTPRKLSFDFQ</p>
Predicted molecular weight	55 kDa including tags
Amino acids	1 to 471
Tags	His tag N-Terminus

## Specifications

Our **Abpromise guarantee** covers the use of **ab99263** in the following tested applications.

The application notes include recommended starting dilutions; optimal dilutions/concentrations should be determined by the end user.

<b>Applications</b>	SDS-PAGE
	Mass Spectrometry
<b>Mass spectrometry</b>	MALDI-TOF
<b>Form</b>	Liquid
<b>Additional notes</b>	Previously labelled as Tryptophanyl tRNA synthetase.

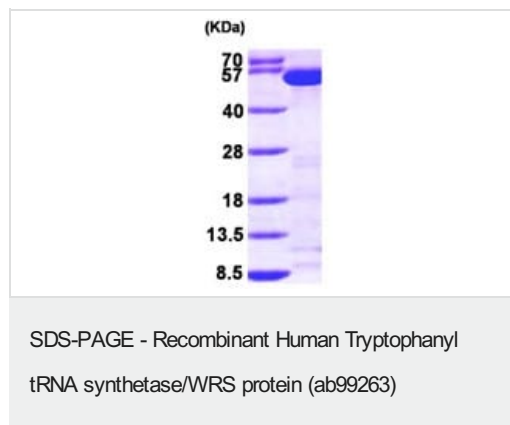
## Preparation and Storage

<b>Stability and Storage</b>	Shipped at 4°C. Upon delivery aliquot and store at -20°C or -80°C. Avoid repeated freeze / thaw cycles.
	pH: 8.00
	Constituents: 0.0154% DTT, 0.316% Tris HCl, 10% Glycerol (glycerin, glycerine), 0.58% Sodium chloride

## General Info

<b>Function</b>	Isoform 1, isoform 2 and T1-TrpRS have aminoacylation activity while T2-TrpRS lacks it. Isoform 2, T1-TrpRS and T2-TrpRS possess angiostatic activity whereas isoform 1 lacks it. T2-TrpRS inhibits fluid shear stress-activated responses of endothelial cells. Regulates ERK, Akt, and eNOS activation pathways that are associated with angiogenesis, cytoskeletal reorganization and shear stress-responsive gene expression.
<b>Sequence similarities</b>	Belongs to the class-I aminoacyl-tRNA synthetase family. Contains 1 WHEP-TRS domain.
<b>Post-translational modifications</b>	Proteolytic cleavage generates 2 forms; T1-TrpRS and T2-TrpRS.
<b>Cellular localization</b>	Cytoplasm.

## Images



15% SDS-PAGE showing ab99263 (3µg).

**Please note:** All products are "FOR RESEARCH USE ONLY. NOT FOR USE IN DIAGNOSTIC PROCEDURES"

### **Our Abpromise to you: Quality guaranteed and expert technical support**

---

- Replacement or refund for products not performing as stated on the datasheet
- Valid for 12 months from date of delivery
- Response to your inquiry within 24 hours
  
- We provide support in Chinese, English, French, German, Japanese and Spanish
- Extensive multi-media technical resources to help you
- We investigate all quality concerns to ensure our products perform to the highest standards

If the product does not perform as described on this datasheet, we will offer a refund or replacement. For full details of the Abpromise, please visit <https://www.abcam.com/abpromise> or contact our technical team.

### **Terms and conditions**

---

- Guarantee only valid for products bought direct from Abcam or one of our authorized distributors