

Product datasheet

Recombinant Human Tryptophanyl tRNA synthetase/WRS protein (Tagged) ab236161

[1 Image](#)

Description

Product name	Recombinant Human Tryptophanyl tRNA synthetase/WRS protein (Tagged)	
Purity	> 85 % SDS-PAGE.	
Expression system	Escherichia coli	
Accession	<u>P23381</u>	
Protein length	Full length protein	
Animal free	No	
Nature	Recombinant	
Species	Human	
Sequence	PNSEPASLLELFNSIATQGELVRSLKAGNASKDEIDSAVK MLVSLKMSYK AAAGEDYKADCPPGNPAPTSNHGPDATEAEEDFVDPWT VQTSSAKGIDYD KLMVRFGSSKIDKELINRIERATGQRPHHFLRRGIFFSHRDM NQVLDAYE NKKPFYLYTGRGPSSEAMHVGHLIPFIFTKWLQDVFNVPL VIQMTDDEKY LWKDLTLDQAYSYAVENAKDIACGFDINKTFIFSDLDYMG MSSGFYKNV VKIQKHVTFNQVKGIFGFTDSDCIGKISFPAIQAAAPSFNSF PQIFRDRT DIQCLIPCAIDQDPYFRMTRDVAPRIGYKPKALLHSTFFPAL QGAQTKMS ASDPNSSIFLTDTAKQIKTKVNHAFSGGRDTIEEHRQFGG NCDVDVSFM YLTFLEDDDKLEQIRKDYTSGAMLTGELKKALIEVLQPLIA EHQARRKE VTDENKEFMTPRKLSFDFQ	
Predicted molecular weight	60 kDa including tags	
Amino acids	2 to 471	
Tags	His tag N-Terminus	
Additional sequence information	N-terminal 10xHis-tagged and C-terminal Myc-tagged.	

Specifications

Our **Abpromise guarantee** covers the use of **ab236161** in the following tested applications.

The application notes include recommended starting dilutions; optimal dilutions/concentrations should be determined by the end user.

Applications	SDS-PAGE
Form	Liquid
Additional notes	Previously labelled as Tryptophanyl tRNA synthetase.

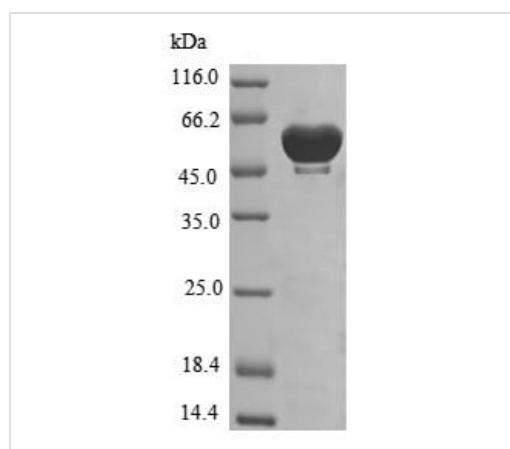
Preparation and Storage

Stability and Storage	Shipped at 4°C. Store at -20°C or -80°C. Avoid freeze / thaw cycle. pH: 7.2 Constituents: Tris buffer, 50% Glycerol (glycerin, glycerine)
------------------------------	---

General Info

Function	Isoform 1, isoform 2 and T1-TrpRS have aminoacylation activity while T2-TrpRS lacks it. Isoform 2, T1-TrpRS and T2-TrpRS possess angiostatic activity whereas isoform 1 lacks it. T2-TrpRS inhibits fluid shear stress-activated responses of endothelial cells. Regulates ERK, Akt, and eNOS activation pathways that are associated with angiogenesis, cytoskeletal reorganization and shear stress-responsive gene expression.
Sequence similarities	Belongs to the class-I aminoacyl-tRNA synthetase family. Contains 1 WHEP-TRS domain.
Post-translational modifications	Proteolytic cleavage generates 2 forms; T1-TrpRS and T2-TrpRS.
Cellular localization	Cytoplasm.

Images



ab236161 analyzed by (Tris-Glycine gel) discontinuous SDS-PAGE (reduced) with 5% enrichment gel and 15% separation gel.

SDS-PAGE - Recombinant Human Tryptophanyl
tRNA synthetase/WRS protein (Tagged) (ab236161)

Please note: All products are "FOR RESEARCH USE ONLY. NOT FOR USE IN DIAGNOSTIC PROCEDURES"

Our Abpromise to you: Quality guaranteed and expert technical support

- Replacement or refund for products not performing as stated on the datasheet
- Valid for 12 months from date of delivery
- Response to your inquiry within 24 hours

- We provide support in Chinese, English, French, German, Japanese and Spanish
- Extensive multi-media technical resources to help you
- We investigate all quality concerns to ensure our products perform to the highest standards

If the product does not perform as described on this datasheet, we will offer a refund or replacement. For full details of the Abpromise, please visit <https://www.abcam.com/abpromise> or contact our technical team.

Terms and conditions

- Guarantee only valid for products bought direct from Abcam or one of our authorized distributors