

Product datasheet

Recombinant human UBE2V1 protein ab198472

2 Images

Description

Product name	Recombinant human UBE2V1 protein
Biological activity	50 µl reaction mix (4 mM ATP, 5 mM MgCl ₂ , 1 mM DTT, UBE1 (0.5 µg), UEV1A or other E2, Biotin-Ubiquitin (0.5 µg) and Smurf2 (2 µg) in 50 mM Tris, pH 7.4) for 30 minutes at 37°C. Add to Streptavidin-coated plates for 30 minutes at 37°C. Incubate with anti-Smurf2, then HRP-labeled secondary antibody and chemiluminescent detection
Purity	> 80 % SDS-PAGE. Lot specific.
Expression system	Escherichia coli
Accession	<u>NM_021988</u>
Protein length	Full length protein
Animal free	No
Nature	Recombinant
Species	Human
Sequence	PGEVQASYLKSQSKLSDEGRLEPRKFHCKGVKVPNFRLL LEELEEGQKGV GDGTVSWGL EDDEDMTLTRWTGMIIGPPRTIYENRIYSLKIECGPKYP EAPPFVRFVTKINMNGVNSSN GVVDPRAISVLAKWQNSYSIKVVLQEL RRLMMSKENMKLPQPPEGQCYSN
Predicted molecular weight	20 kDa including tags
Amino acids	2 to 170
Tags	His tag N-Terminus

Specifications

Our **Abpromise guarantee** covers the use of **ab198472** in the following tested applications.

The application notes include recommended starting dilutions; optimal dilutions/concentrations should be determined by the end user.

Applications	SDS-PAGE Functional Studies
Form	Liquid

Preparation and Storage

Stability and Storage

Shipped on Dry Ice. Store at -80°C. Avoid freeze / thaw cycle.

pH: 8.00

Constituents: 0.71% Tris HCl, 0.72% Sodium chloride, 0.02% Potassium chloride, 10% Glycerol (glycerin, glycerine), 0.05% (R*,R*)-1,4-Dimercaptobutan-2,3-diol

This product is an active protein and may elicit a biological response in vivo, handle with caution.

General Info

Function

Has no ubiquitin ligase activity on its own. The UBE2V1-UBE2N heterodimer catalyzes the synthesis of non-canonical poly-ubiquitin chains that are linked through Lys-63. This type of poly-ubiquitination activates IKK and does not seem to involve protein degradation by the proteasome. Plays a role in the activation of NF-kappa-B mediated by IL1B, TNF, TRAF6 and TRAF2. Mediates transcriptional activation of target genes. Plays a role in the control of progress through the cell cycle and differentiation. Plays a role in the error-free DNA repair pathway and contributes to the survival of cells after DNA damage.

Tissue specificity

Highly expressed in thyroid, pancreas, spinal cord, lymph node, trachea, adrenal gland, bone marrow and pancreas. Detected at low levels in heart, breast, placenta, brain, liver, kidney, stomach and lung.

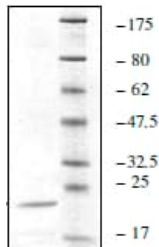
Sequence similarities

Belongs to the ubiquitin-conjugating enzyme family.

Cellular localization

Nucleus. Excluded from the nucleolus.

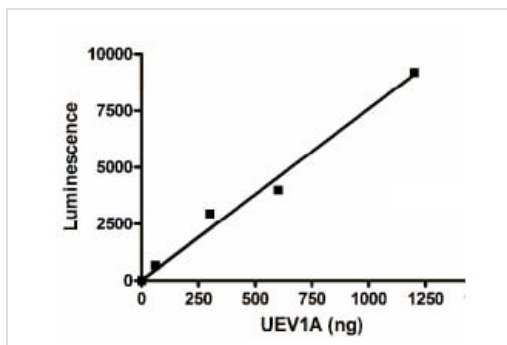
Images



4-20% SDS PAGE analysis of 1 µg ab198472 stained with Coomassie

SDS-PAGE - Recombinant human UBE2V1 protein (ab198472)

Functional studies of ab198472



Functional Studies - Recombinant human UBE2V1 protein (ab198472)

Please note: All products are "FOR RESEARCH USE ONLY. NOT FOR USE IN DIAGNOSTIC PROCEDURES"

Our Abpromise to you: Quality guaranteed and expert technical support

- Replacement or refund for products not performing as stated on the datasheet
- Valid for 12 months from date of delivery
- Response to your inquiry within 24 hours
- We provide support in Chinese, English, French, German, Japanese and Spanish
- Extensive multi-media technical resources to help you
- We investigate all quality concerns to ensure our products perform to the highest standards

If the product does not perform as described on this datasheet, we will offer a refund or replacement. For full details of the Abpromise, please visit <https://www.abcam.com/abpromise> or contact our technical team.

Terms and conditions

- Guarantee only valid for products bought direct from Abcam or one of our authorized distributors