

Product datasheet

Recombinant Human ULBP2 protein (His tag) ab219455

1 Image

Description

Product name	Recombinant Human ULBP2 protein (His tag)		
Purity	> 90 % SDS-PAGE. Affinity purified		
Endotoxin level	< 1.000 Eu/µg		
Expression system	Baculovirus infected insect cells		
Accession	<u>Q9BZM5</u>		
Protein length	Full length protein		
Animal free	No		
Nature	Recombinant		
Species	Human		
Sequence	ADPGRADPHSLCYDITVIPKFRPGPRWCAVQGQVDEKTF LHYDCGNKTVT PVSPLGKKLNVTTAWKAQNP VLREVVDILT EQLRDIQLENYTPKEPLTLQARMSCEQKAEGHSSGSWQF SFDGQIFLLFD SEKRMWTTVHPGARKMKEKWENDKVVAMSFHYFSMGD CIGWLEDFLMGMD STLEPSAGAPLAMSHHHHHH		
Predicted molecular weight	23 kDa including tags		
Amino acids	26 to 216		
Tags	His tag C-Terminus		
Additional sequence information	Mature protein without signal and propetides.		

Specifications

Our **Abpromise guarantee** covers the use of **ab219455** in the following tested applications.
The application notes include recommended starting dilutions; optimal dilutions/concentrations should be determined by the end user.

FormLiquid

Preparation and Storage

Stability and StorageShipped at 4°C. Store at +4°C short term (1-2 weeks). Upon delivery aliquot. Store at -20°C or -

80°C. Avoid freeze / thaw cycle.

pH: 7.40

Constituents: 10% Glycerol (glycerin, glycerine), 90% PBS

General Info

Function

Ligand for the NKG2D receptor, together with at least ULBP1 and ULBP3. ULBPs activate multiple signaling pathways in primary NK cells, resulting in the production of cytokines and chemokines. Binding of ULBPs ligands to NKG2D induces calcium mobilization and activation of the JAK2, STAT5, ERK and PI3K kinase/Akt signal transduction pathway. In CMV infected cells, interacts with soluble CMV glycoprotein UL16. The interaction with UL16 blocked the interaction with the NKG2D receptor, providing a mechanism by which CMV infected cells might escape the immune system. UL16 also causes ULBP2 to be retained in the ER and cis-Golgi apparatus so that it does not reach the cell surface.

Tissue specificity

Expressed in various types of cancer cell lines and in the fetus, but not in normal tissues.

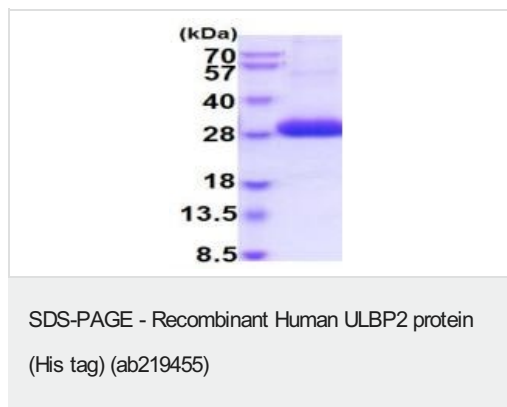
Sequence similarities

Belongs to the MHC class I family.

Cellular localization

Cell membrane. Secreted.

Images



15% SDS-PAGE using 3ug of ab219455.

Please note: All products are "FOR RESEARCH USE ONLY. NOT FOR USE IN DIAGNOSTIC PROCEDURES"

Our Abpromise to you: Quality guaranteed and expert technical support

- Replacement or refund for products not performing as stated on the datasheet
- Valid for 12 months from date of delivery
- Response to your inquiry within 24 hours
- We provide support in Chinese, English, French, German, Japanese and Spanish
- Extensive multi-media technical resources to help you
- We investigate all quality concerns to ensure our products perform to the highest standards

If the product does not perform as described on this datasheet, we will offer a refund or replacement. For full details of the Abpromise, please visit <https://www.abcam.com/abpromise> or contact our technical team.

Terms and conditions

- Guarantee only valid for products bought direct from Abcam or one of our authorized distributors