

Product datasheet

Recombinant Human USP6 protein ab160339

1 Image

Description	
Product name	Recombinant Human USP6 protein
Expression system	Wheat germ
Protein length	Protein fragment
Animal free	No
Nature	Recombinant
Species	Human
Sequence	DMVENADSLQAQERKDILMKYDKGHRAGLPEDKGPEPV GINSSIDRFIL HETELPPVTAREAKKIRREMTRTSKWMEMLGEWETYKH
Amino acids	2 to 89
Tags	GST tag N-Terminus

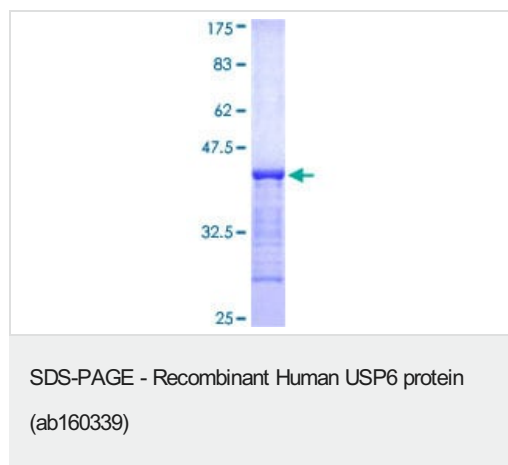
Specifications	
Our <b>Abpromise guarantee</b> covers the use of <b>ab160339</b> in the following tested applications.	
The application notes include recommended starting dilutions; optimal dilutions/concentrations should be determined by the end user.	
Applications	Western blot ELISA
Form	Liquid
Additional notes	

Preparation and Storage	
Stability and Storage	Shipped on dry ice. Upon delivery aliquot and store at -80°C. Avoid freeze / thaw cycles. pH: 8.00 Constituents: 0.31% Glutathione, 0.79% Tris HCl

General Info	
--------------	--

<b>Function</b>	Deubiquitinase with an ATP-independent isopeptidase activity, cleaving at the C-terminus of the ubiquitin moiety. Catalyzes its own deubiquitination. In vitro, isoform 2, but not isoform 3, shows deubiquitinating activity. Promotes plasma membrane localization of ARF6 and selectively regulates ARF6-dependent endocytic protein trafficking. Is able to initiate tumorigenesis by inducing the production of matrix metalloproteinases following NF-kappa-B activation.
<b>Tissue specificity</b>	Testis specific. Expressed in various cancer cell lines.
<b>Involvement in disease</b>	Note=A chromosomal aberration involving USP6 is a common genetic feature of aneurysmal bone cyst, a benign osseous neoplasm. Translocation t(16;17)(q22;p13) with CDH11. The translocation generates a fusion gene in which the strong CDH11 promoter is fused to the entire USP6 coding sequence, resulting in USP6 transcriptional up-regulation.
<b>Sequence similarities</b>	Belongs to the peptidase C19 family. Contains 1 Rab-GAP TBC domain.
<b>Domain</b>	The Rab-GAP TBC domain lacks GTPase activator activity but is necessary for interaction with ARF6.
<b>Post-translational modifications</b>	Monubiquitinated; ubiquitination is calmodulin and calcium dependent.
<b>Cellular localization</b>	Cell membrane. Cytoplasm. Endosome. Localizes to the plasma membrane and to filamentous structures within the cell corresponding to ARF6 regulated tubular endosomes. Activation of RAC1 and CDC42 can direct the relocalization of USP6 to the plasma membrane in a manner that depends on the integrity of the actin cytoskeleton.

## Images



ab160339 on a 12.5% SDS-PAGE stained with Coomassie Blue.

**Please note:** All products are "FOR RESEARCH USE ONLY. NOT FOR USE IN DIAGNOSTIC PROCEDURES"

## Our Abpromise to you: Quality guaranteed and expert technical support

- Replacement or refund for products not performing as stated on the datasheet
- Valid for 12 months from date of delivery
- Response to your inquiry within 24 hours
- We provide support in Chinese, English, French, German, Japanese and Spanish
- Extensive multi-media technical resources to help you

- We investigate all quality concerns to ensure our products perform to the highest standards

If the product does not perform as described on this datasheet, we will offer a refund or replacement. For full details of the Abpromise, please visit <https://www.abcam.com/abpromise> or contact our technical team.

### **Terms and conditions**

---

- Guarantee only valid for products bought direct from Abcam or one of our authorized distributors