

## Product datasheet

# Recombinant Human VE Cadherin protein ab112269

[1 Image](#)

### Description

---

<b>Product name</b>	Recombinant Human VE Cadherin protein
<b>Biological activity</b>	useful for Antibody Production and Protein Array
<b>Expression system</b>	Wheat germ
<b>Accession</b>	<b><u>P33151</u></b>
<b>Protein length</b>	Protein fragment
<b>Animal free</b>	No
<b>Nature</b>	Recombinant
<b>Species</b>	Human
<b>Sequence</b>	WNQMHIDEEEKNTSLPHHVGKIKSSVSRKNAKYLLKGEYVG KVFRVDAETG DVFAIERLDRENISEYHLTAVIMDKDTGENLETPSSFTIKVH DVNDNWPV
<b>Predicted molecular weight</b>	37 kDa including tags
<b>Amino acids</b>	51 to 150
<b>Tags</b>	GST tag N-Terminus

### Specifications

---

Our **Abpromise guarantee** covers the use of **ab112269** in the following tested applications.

The application notes include recommended starting dilutions; optimal dilutions/concentrations should be determined by the end user.

<b>Applications</b>	SDS-PAGE Peptide Array Western blot ELISA
<b>Form</b>	Liquid
<b>Additional notes</b>	This product is useful for Antibody Production and Protein Array.

### Preparation and Storage

---

## Stability and Storage

Shipped on dry ice. Upon delivery aliquot and store at -80°C. Avoid freeze / thaw cycles.

pH: 8.00

Constituents: 0.31% Glutathione, 0.79% Tris HCl

Glutathione is reduced

## General Info

---

### Function

Cadherins are calcium dependent cell adhesion proteins. They preferentially interact with themselves in a homophilic manner in connecting cells; cadherins may thus contribute to the sorting of heterogeneous cell types. This cadherin may play an important role in endothelial cell biology through control of the cohesion and organization of the intercellular junctions. It associates with alpha-catenin forming a link to the cytoskeleton.

### Tissue specificity

Endothelial tissues and brain.

### Sequence similarities

Contains 5 cadherin domains.

### Post-translational modifications

Phosphorylated on tyrosine residues by KDR/VEGFR-2. Dephosphorylated by PTPRB.

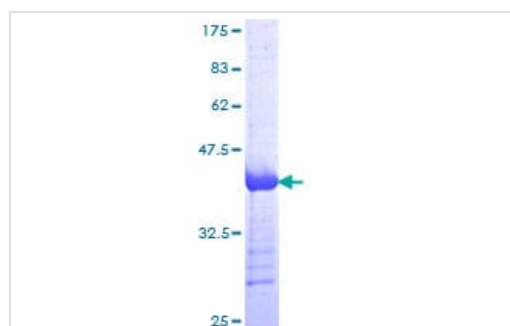
### Cellular localization

Cell junction. Cell membrane. Found at cell-cell boundaries and probably at cell-matrix boundaries.

---

## Images

---



12.5% SDS-PAGE Stained with Coomassie Blue.

SDS-PAGE - Recombinant Human VE Cadherin protein (ab112269)

**Please note:** All products are "FOR RESEARCH USE ONLY. NOT FOR USE IN DIAGNOSTIC PROCEDURES"

## Our Promise to you: Quality guaranteed and expert technical support

---

- Replacement or refund for products not performing as stated on the datasheet
- Valid for 12 months from date of delivery
- Response to your inquiry within 24 hours
  
- We provide support in Chinese, English, French, German, Japanese and Spanish
- Extensive multi-media technical resources to help you

- We investigate all quality concerns to ensure our products perform to the highest standards

If the product does not perform as described on this datasheet, we will offer a refund or replacement. For full details of the Abpromise, please visit <https://www.abcam.com/abpromise> or contact our technical team.

### **Terms and conditions**

---

- Guarantee only valid for products bought direct from Abcam or one of our authorized distributors