

Recombinant human VEGF Receptor 1 protein ab84771

5 Images

Description

Product name	Recombinant human VEGF Receptor 1 protein
Biological activity	The Specific activity of ab84771 was determined to be 35 nmol/min/mg.
Purity	> 80 % Densitometry. Affinity purified.
Expression system	Insect cells
Accession	<u>P17948-1</u>
Protein length	Full length protein
Animal free	No
Nature	Recombinant
Species	Human
Amino acids	784 to 1338
Tags	GST tag N-Terminus

Specifications

Our **Abpromise guarantee** covers the use of **ab84771** in the following tested applications.

The application notes include recommended starting dilutions; optimal dilutions/concentrations should be determined by the end user.

Applications	Western blot Functional Studies SDS-PAGE
Form	Liquid
Additional notes	<u>ab204862</u> (IRS1 peptide) can be utilized as a substrate for assessing kinase activity

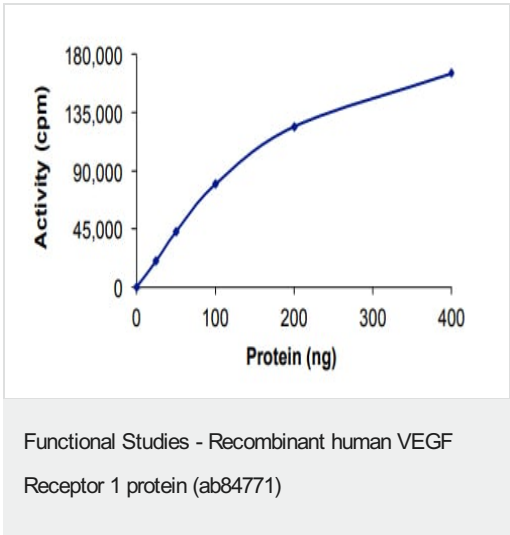
Preparation and Storage

Stability and Storage	Shipped on dry ice. Upon delivery aliquot and store at -80°C. Avoid freeze / thaw cycles. pH: 7.50 Constituents: 0.0038% EGTA, 0.00174% PMSF, 0.00385% DTT, 0.79% Tris HCl, 0.00292% EDTA, 25% Glycerol (glycerin, glycerine), 0.87% Sodium chloride This product is an active protein and may elicit a biological response in vivo, handle with caution.
------------------------------	--

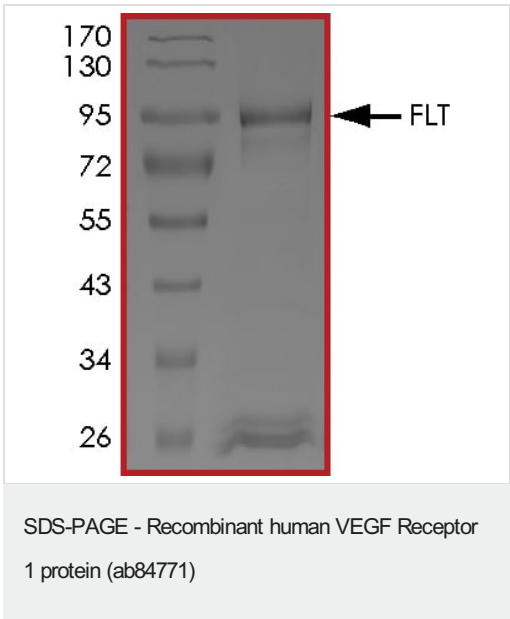
General Info

Function	Receptor for VEGF, VEGFB and PGF. Has a tyrosine-protein kinase activity. The VEGF-kinase ligand/receptor signaling system plays a key role in vascular development and regulation of vascular permeability. Isoform sFlt1 may have an inhibitory role in angiogenesis.
Tissue specificity	Mostly in normal lung, but also in placenta, liver, kidney, heart and brain tissues. Specifically expressed in most of the vascular endothelial cells, and also expressed in peripheral blood monocytes. Isoform sFlt1 is strongly expressed in placenta.
Sequence similarities	Belongs to the protein kinase superfamily. Tyr protein kinase family. CSF-1/PDGF receptor subfamily. Contains 7 Ig-like C2-type (immunoglobulin-like) domains. Contains 1 protein kinase domain.
Cellular localization	Secreted and Cell membrane.

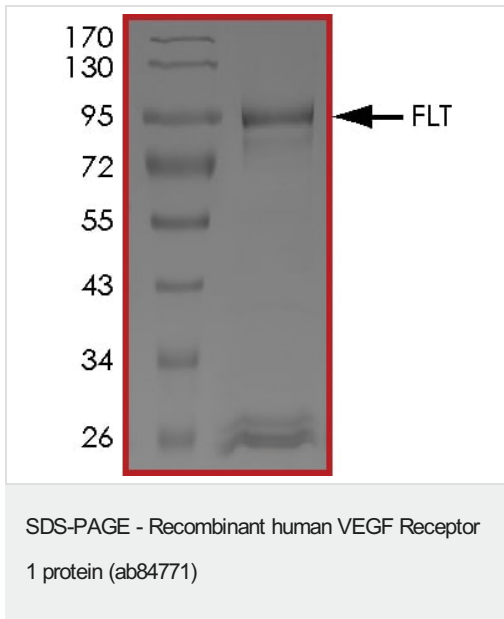
Images



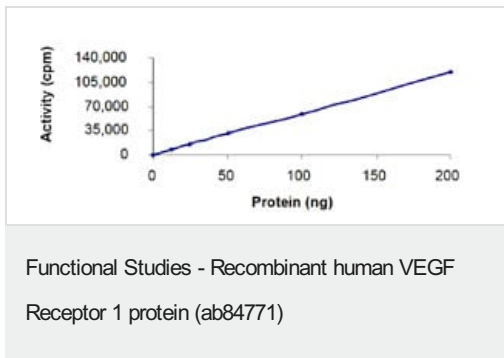
The specific activity of VEGF Receptor 1 (ab84771) was determined to be 41 nmol/min/mg as per activity assay protocol



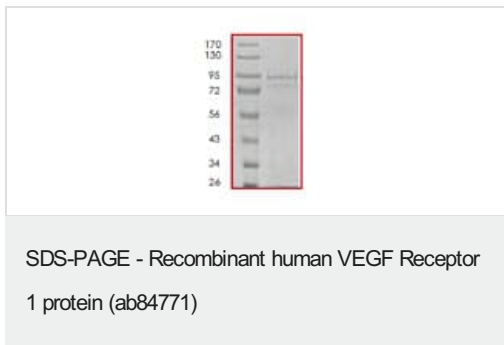
SDS PAGE analysis of ab84771



SDS PAGE analysis of ab84771



The Specific activity of ab84771 was determined to be 35 nmol/min/mg.



SDS-PAGE showing ab84771 at approximately 94kDa.

Please note: All products are "FOR RESEARCH USE ONLY. NOT FOR USE IN DIAGNOSTIC PROCEDURES"

Our Abpromise to you: Quality guaranteed and expert technical support

- Replacement or refund for products not performing as stated on the datasheet
- Valid for 12 months from date of delivery
- Response to your inquiry within 24 hours
- We provide support in Chinese, English, French, German, Japanese and Spanish
- Extensive multi-media technical resources to help you

- We investigate all quality concerns to ensure our products perform to the highest standards

If the product does not perform as described on this datasheet, we will offer a refund or replacement. For full details of the Abpromise, please visit <https://www.abcam.com/abpromise> or contact our technical team.

Terms and conditions

- Guarantee only valid for products bought direct from Abcam or one of our authorized distributors