

Product datasheet

Recombinant Human VGluT1 protein ab153436

[1 Image](#)

Description

Product name	Recombinant Human VGluT1 protein
Expression system	Wheat germ
Protein length	Full length protein
Animal free	No
Nature	Recombinant
Species	Human
Sequence	MEFRQEEFRKLAGRALGKLRHLLLEKRQEGAETLELSADG RPVTTQTRDPP VVDCTCFGLPRRYIAIMSGLGFCISFGIRCNLGVAIVSMVN NSTTHRGG HVVVQKAQFSWDPETVGLIHGSFFWGYVTQIPGGFICQKF AANRVFGFA VATSTLNMLIPSAARVHYGCVIFVRILQGLVEGV TYPACHGI WSKWAPP LERSRLATTAFCGSYAGAVVAMPLAGVLVQYSGWSSVFY VYGSFGIFWYL FWLLVSYESPALHPSISEEERKYIEDAIGESAKLMNPLTKF STPWRRFFT SMPVYAIIVANFCRSWTFYLLISQPAYFEEVFGFEISKVGL VSALPHLV MTIIVPIGGQIADFLRSRRIMSTTNVRKLMNCGGFGMEATLL LVVGYSHS KGV AISFLVLA VGFSGFAISGFNVNHLDIARRYASILMGISN GVGTLSGM VCP IIVGAMTKHKKTREEWQYVFLIASLVHYGGVIFYGVFAS GEKQPWAEP EEMSEEKCGFVGH DQLAGSDDSEMEDEAEPPGAPPAP PPSYGATHSTFQP PRPPPPVRDY
Amino acids	1 to 560
Tags	GST tag N-Terminus

Specifications

Our **Abpromise guarantee** covers the use of **ab153436** in the following tested applications.

The application notes include recommended starting dilutions; optimal dilutions/concentrations should be determined by the end user.

Applications Western blot

ELISA

Form Liquid

Additional notes

Preparation and Storage

Stability and Storage Shipped on dry ice. Upon delivery aliquot and store at -80°C. Avoid freeze / thaw cycles.

pH: 8.00

Constituents: 0.31% Glutathione, 0.79% Tris HCl

General Info

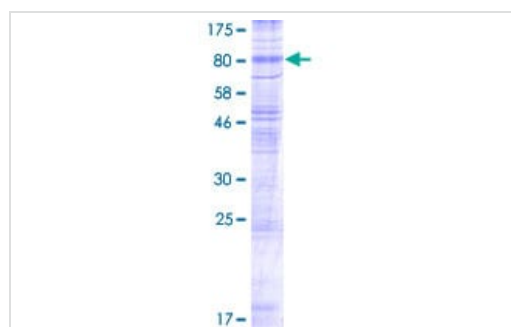
Function Mediates the uptake of glutamate into synaptic vesicles at presynaptic nerve terminals of excitatory neural cells. May also mediate the transport of inorganic phosphate.

Tissue specificity Expressed in several regions of the brain including amygdala, cerebellum, cerebral cortex, hippocampus, frontal lobe, medulla, occipital lobe, putamen and temporal lobe.

Sequence similarities Belongs to the major facilitator superfamily. Sodium/anion cotransporter family. VGLUT subfamily.

Cellular localization Cytoplasmic vesicle, secretory vesicle, synaptic vesicle membrane. Membrane. Cell junction, synapse, synaptosome.

Images



ab153436 on a 12.5% SDS-PAGE stained with Coomassie Blue.

SDS-PAGE - Recombinant Human VGLUT1 protein
(ab153436)

Please note: All products are "FOR RESEARCH USE ONLY. NOT FOR USE IN DIAGNOSTIC PROCEDURES"

Our Abpromise to you: Quality guaranteed and expert technical support

- Replacement or refund for products not performing as stated on the datasheet
- Valid for 12 months from date of delivery
- Response to your inquiry within 24 hours

- We provide support in Chinese, English, French, German, Japanese and Spanish
- Extensive multi-media technical resources to help you
- We investigate all quality concerns to ensure our products perform to the highest standards

If the product does not perform as described on this datasheet, we will offer a refund or replacement. For full details of the Abpromise, please visit <https://www.abcam.com/abpromise> or contact our technical team.

Terms and conditions

- Guarantee only valid for products bought direct from Abcam or one of our authorized distributors