

Recombinant Human VPS35 protein ab132953

1 Image

Description

Product name	Recombinant Human VPS35 protein
Expression system	Wheat germ
Accession	<u>Q96QK1</u>
Protein length	Full length protein
Animal free	No
Nature	Recombinant
Species	Human

Sequence	MPTTQQSPQDEQEKLLEDAIQAVKVQSFQMKRCLDKNKL MDALKHASNML GELRTSMLSPKSYELYMAISDELHYLEVYLTDEFAKGRKV ADLYELVQY AGNIIPRLYLLITVGVVYVKSFPQSRKDILKDLVEMCRGVQH PLRGLFLR NYLLQCTRNLPEGEPTDEETTGDISDSMDFVLLNFAEM NKLWVRMQHQ GHSRDREKRERERQELRILVGTNLVRLSQLEGVNNVERYKQ MLTGILEQV VNCRDALAQEYLMECIIQVFPDEFHLQTLNPFLRACAELH QNVNVKNIII ALIDRLALFAHREDGPGIPADIKLFDIFSQQVATVIQSRQDM PSEDVVSL QVSLINLAMKCYPRVDYVDKVLETTVEIFNKLNLEHIATSS AVSKELTR LLKIPVDTYNNILTVLKLKHFHPLFEYFDYESRKSMSCYVLS NVLDYNTE VMSQDQVDSIMNLVSTLIQDQPDQPVEDPDPEDFADEQSL VGRFIHLLRS EDPDQQYLILNTARKHFGAGGNQRIRFTLPPLVFAAYQLAF RYKENSKVD DKWEKKCQKIFSFAHQTISALIKAELAELPLRFLQGALAA GEIGFENHE TVAYEFMSQAFSLYEDEISDSKAQLAAITLIIGTFERMKCF EENHEPLR TQCALAASKLLKKPDQGRAVSTCAHLFWSGRNTDKNGE ELHGGKRVMECL
-----------------	------------------------------------------------------------------------------------------------------------------------------------------------------------------------------------------------------------------------------------------------------------------------------------------------------------------------------------------------------------------------------------------------------------------------------------------------------------------------------------------------------------------------------------------------------------------------------------------------------------------------------------------------------------------------------------------------------------------------------------------------------------------------------------------------------------------------------------

KKALKIANQCMDPSLQVQLFIEILNRYIFYEKENDAVTIQVL
NQLIQKI
REDLPNLESSEETEQINKHFHNTLEHLRLRRESPESGPIY
EGLIL

Predicted molecular weight 118 kDa including tags
Amino acids 1 to 796

Specifications

Our **Abpromise guarantee** covers the use of **ab132953** in the following tested applications.

The application notes include recommended starting dilutions; optimal dilutions/concentrations should be determined by the end user.

Applications SDS-PAGE
Western blot
ELISA

Form Liquid

Additional notes

Preparation and Storage

Stability and Storage Shipped on dry ice. Upon delivery aliquot and store at -80°C. Avoid freeze / thaw cycles.
pH: 8.00
Constituents: 0.31% Glutathione, 0.79% Tris HCl

General Info

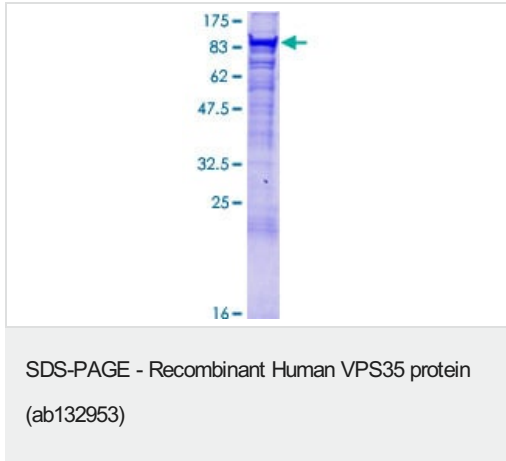
Function Essential component of the retromer complex, a complex required to retrieve lysosomal enzyme receptors (IGF2R and M6PR) from endosomes to the trans-Golgi network. Also required to regulate transcytosis of the polymeric immunoglobulin receptor (pIgR-pIgA).

Tissue specificity Ubiquitous. Highly expressed in heart, brain, placenta, skeletal muscle, spleen, thymus, testis, ovary, small intestine, kidney and colon.

Sequence similarities Belongs to the VPS35 family.

Cellular localization Cytoplasm. Membrane.

Images



12.5% SDS-PAGE analysis of ab132953 stained with Coomassie Blue.

Please note: All products are "FOR RESEARCH USE ONLY. NOT FOR USE IN DIAGNOSTIC PROCEDURES"

Our Abpromise to you: Quality guaranteed and expert technical support

- Replacement or refund for products not performing as stated on the datasheet
- Valid for 12 months from date of delivery
- Response to your inquiry within 24 hours
- We provide support in Chinese, English, French, German, Japanese and Spanish
- Extensive multi-media technical resources to help you
- We investigate all quality concerns to ensure our products perform to the highest standards

If the product does not perform as described on this datasheet, we will offer a refund or replacement. For full details of the Abpromise, please visit <https://www.abcam.com/abpromise> or contact our technical team.

Terms and conditions

- Guarantee only valid for products bought direct from Abcam or one of our authorized distributors