

Recombinant Human WHSC2/NELF-A protein ab116197

1 Image

Description	
Product name	Recombinant Human WHSC2/NELF-A protein
Purity	> 85 % SDS-PAGE. ab116197 was purified using conventional chromatography techniques.
Expression system	Escherichia coli
Accession	<u>Q9H3P2</u>
Protein length	Full length protein
Animal free	No
Nature	Recombinant
Species	Human
Sequence	MGSSHHHHHHSSGLVPRGSHMPGQRRALSPKMASMRE SDTGLWLHNKLG TDELWAPPSIASLLTAAVIDNIRLCFHGLSSAVKLLKLLGTL HLPRRTVD EMKGALMEIIQLASLSDSPWVLMVADILKSFPDGTGSLNLEL EEQNPVQD ILGELREKVGECEASAMLPLECQYLNKNALTTLAGPLTPP VKHFQLKRKP KSATLRAELLQKSTETAQQLKRSAGVPFHAKGRGLLRKM DTTTPKGIK QAPFRSPTAPSVFSPTGNRTPIPPSRTLLRKERGVKLLDIS ELDMVGAGR EAKRRRKTLDAEVVEKPAKEETVVENATPDYAAGLVSTQ KLGSLNNEPAL PSTSYLPSTPSVVPASSYPSSETPPAPSSREASRPPEEP SAPSPTLPAQ FKQRAPMYNSGLSPATPTPAAPTSPPTTPPAVAPTTQT PPVAMVAPQT QAPAQQQPKKNLSLTREQMFAAQEMFKTANKVTRPEKAL ILGFMAKSREN PCQEQGDVIQIKLSEHTEDLPKADGQGSTTMLVDTVFEMN YATGQWTRFK KYKPMTNVS
Predicted molecular weight	61 kDa including tags
Amino acids	1 to 539

Tags

His tag N-Terminus

Specifications

Our **Abpromise guarantee** covers the use of **ab116197** in the following tested applications.

The application notes include recommended starting dilutions; optimal dilutions/concentrations should be determined by the end user.

Applications	SDS-PAGE
Form	Liquid
Additional notes	Protein previously labeled as WHSC2.

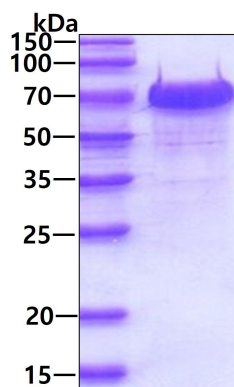
Preparation and Storage

Stability and Storage	Shipped at 4°C. Store at +4°C short term (1-2 weeks). Upon delivery aliquot. Store at -20°C or -80°C. Avoid freeze / thaw cycle. pH: 8.00 Constituents: 0.08% DTT, 0.32% Tris HCl, 0.03% EDTA, 20% Glycerol (glycerin, glycerine), 1.17% Sodium chloride
------------------------------	--------------------------------------------------------------------------------------------------------------------------------------------------------------------------------------------------------------------------------------------------------------------

General Info

Function	Essential component of the NELF complex, a complex that negatively regulates the elongation of transcription by RNA polymerase II. The NELF complex, which acts via an association with the DSIF complex and causes transcriptional pausing, is counteracted by the P-TEFb kinase complex. Probably required to interact with the RNA polymerase II complex.
Tissue specificity	Ubiquitous. Expressed in heart, brain, placenta, liver, skeletal muscle, kidney and pancreas. Expressed at lower level in adult lung. Expressed in fetal brain, lung, liver and kidney.
Sequence similarities	Belongs to the NELF-A family. Contains 1 HDAg-like domain.
Domain	The HDAg-like domain is essential for transcriptional repression, and mediates the interaction with the RNA polymerase II complex.
Cellular localization	Nucleus.

Images



15% SDS-PAGE analysis of 3 µg ab116197.

SDS-PAGE - Recombinant Human WHSC2/NELF-A protein (ab116197)

Please note: All products are "FOR RESEARCH USE ONLY. NOT FOR USE IN DIAGNOSTIC PROCEDURES"

Our Abpromise to you: Quality guaranteed and expert technical support

- Replacement or refund for products not performing as stated on the datasheet
- Valid for 12 months from date of delivery
- Response to your inquiry within 24 hours
- We provide support in Chinese, English, French, German, Japanese and Spanish
- Extensive multi-media technical resources to help you
- We investigate all quality concerns to ensure our products perform to the highest standards

If the product does not perform as described on this datasheet, we will offer a refund or replacement. For full details of the Abpromise, please visit <https://www.abcam.com/abpromise> or contact our technical team.

Terms and conditions

- Guarantee only valid for products bought direct from Abcam or one of our authorized distributors