

## Product datasheet

# Recombinant Human XAGE1 protein ab134602

1 Image

### Description

<b>Product name</b>	Recombinant Human XAGE1 protein
<b>Purity</b>	> 85 % SDS-PAGE. ab134602 was purified using conventional chromatography techniques.
<b>Expression system</b>	Escherichia coli
<b>Accession</b>	<u><a href="#">Q9HD64</a></u>
<b>Protein length</b>	Full length protein
<b>Animal free</b>	No
<b>Nature</b>	Recombinant
<b>Species</b>	Human
<b>Sequence</b>	MGSSHHHHHH SSGLVPRGSH MGSME <span>SP</span> KKK NQQLKVGILH LGS <span>RQ</span> KKIRI Q <span>LR</span> SCATWK VICKSCISQT PGINLDLGSG VKVKIIPKEE HCKMPEAGEE QPQV
<b>Predicted molecular weight</b>	12 kDa including tags
<b>Amino acids</b>	1 to 81
<b>Tags</b>	His tag N-Terminus

### Specifications

Our **Abpromise guarantee** covers the use of **ab134602** in the following tested applications.

The application notes include recommended starting dilutions; optimal dilutions/concentrations should be determined by the end user.

<b>Applications</b>	SDS-PAGE Mass Spectrometry
<b>Mass spectrometry</b>	MALDI-TOF
<b>Form</b>	Liquid

### Preparation and Storage

<b>Stability and Storage</b>	Shipped at 4°C. Store at +4°C short term (1-2 weeks). Upon delivery aliquot. Store at -20°C or -80°C. Avoid freeze / thaw cycle.  pH: 7.5
------------------------------	---

Constituents: 0.03% DTT, 0.32% Tris HCl, 20% Glycerol (glycerin, glycerine), 1.17% Sodium chloride

## General Info

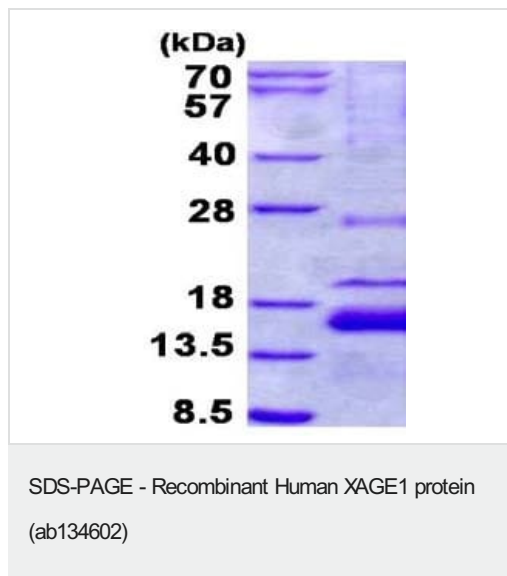
### Tissue specificity

In normal tissues, highly expressed in testis. Expressed also in many different types of cancers: highly expressed in breast cancer, prostate cancer and many types of lung cancers, including squamous cell carcinoma, small cell carcinoma, non-small cell carcinoma, and adenocarcinoma, as well as in Ewing's cell lines, in some Ewing's sarcoma patient samples, and in one of one alveolar rhabdomyosarcoma patient sample.

### Sequence similarities

Belongs to the GAGE family.

## Images



15% SDS-PAGE analysis of ab134602 (3µg).

**Please note:** All products are "FOR RESEARCH USE ONLY. NOT FOR USE IN DIAGNOSTIC PROCEDURES"

## Our Abpromise to you: Quality guaranteed and expert technical support

- Replacement or refund for products not performing as stated on the datasheet
- Valid for 12 months from date of delivery
- Response to your inquiry within 24 hours
- We provide support in Chinese, English, French, German, Japanese and Spanish
- Extensive multi-media technical resources to help you
- We investigate all quality concerns to ensure our products perform to the highest standards

If the product does not perform as described on this datasheet, we will offer a refund or replacement. For full details of the Abpromise, please visit <https://www.abcam.com/abpromise> or contact our technical team.

## Terms and conditions

- Guarantee only valid for products bought direct from Abcam or one of our authorized distributors