

Product datasheet

Recombinant Human XTP4 protein ab168086

1 Image

Description

Product name	Recombinant Human XTP4 protein
Purity	> 95 % SDS-PAGE. ab168086 is purified using conventional chromatography techniques.
Expression system	Escherichia coli
Accession	<u>Q9BRT3</u>
Protein length	Full length protein
Animal free	No
Nature	Recombinant
Species	Human
Sequence	MGSSHHHHHH SSGLVPRGSH MGSMMSGEPGQ TSVAPPPEEV EPGSGVRIVV EYCEPCGFEA TYLELASAVK EQYPGIEIES RLGGTGAFEI EINGQLVFSK LENGGFPEYK DLIEAIRRAS NGETLEKITN SRPPC
Predicted molecular weight	15 kDa including tags
Amino acids	1 to 112
Tags	His tag N-Terminus

Specifications

Our **Abpromise guarantee** covers the use of **ab168086** in the following tested applications.

The application notes include recommended starting dilutions; optimal dilutions/concentrations should be determined by the end user.

Applications	SDS-PAGE Mass Spectrometry
Mass spectrometry	MALDI-TOF
Form	Liquid

Preparation and Storage

Stability and Storage	Shipped at 4°C. Store at +4°C short term (1-2 weeks). Upon delivery aliquot. Store at -20°C or -80°C. Avoid freeze / thaw cycle.
------------------------------	--

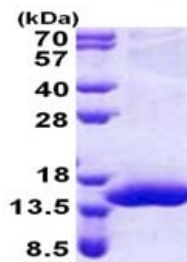
pH: 8.00

Constituents: 0.02% DTT, 0.32% Tris HCl, 10% Glycerol (glycerin, glycerine), 0.88% Sodium chloride

General Info

Function	Increases cell migration by inducing filopodia formation at the leading edge of migrating cells. Plays a role in regulation of apoptosis, possibly through control of CASP3. May be involved in a redox-related process.
Tissue specificity	Among normal tissues, present only in Leydig cells. Strongly up-regulated in breast cancers and in brain cancer distant metastasis (at protein level). Up-regulated in prostate cancer cells and in the higher grades of prostate adenocarcinoma (at protein level).
Sequence similarities	Belongs to the SelWTH family.
Post-translational modifications	Isoprenylation facilitates association with the plasma membrane and enhances the migratory phenotype of cells by inducing increased filopodia formation.
Cellular localization	Cytoplasm > cytosol. Cell membrane. Concentrates at the leading edge of migrating cells. Localizes outside membrane raft regions.

Images



15% SDS-PAGE analysis of ab168086 (3µg).

SDS-PAGE - Recombinant Human XTP4 protein
(ab168086)

Please note: All products are "FOR RESEARCH USE ONLY. NOT FOR USE IN DIAGNOSTIC PROCEDURES"

Our Abpromise to you: Quality guaranteed and expert technical support

- Replacement or refund for products not performing as stated on the datasheet
- Valid for 12 months from date of delivery
- Response to your inquiry within 24 hours
- We provide support in Chinese, English, French, German, Japanese and Spanish
- Extensive multi-media technical resources to help you
- We investigate all quality concerns to ensure our products perform to the highest standards

If the product does not perform as described on this datasheet, we will offer a refund or replacement. For full details of the Abpromise,

please visit <https://www.abcam.com/abpromise> or contact our technical team.

Terms and conditions

- Guarantee only valid for products bought direct from Abcam or one of our authorized distributors