

## Product datasheet

# Recombinant human YKL-40/CHI3L1 protein ab182706

[2 References](#) [1 Image](#)

### Description

<b>Product name</b>	Recombinant human YKL-40/CHI3L1 protein	
<b>Biological activity</b>	Measured by the ability of the immobilized protein to support the adhesion of FaDu human squamous cell carcinoma cells. When 50000 cells per well are added to rhCHI3-L1 coated plate, cell adhesion is enhanced in a dose dependent manner. The ED <sub>50</sub> for this effect is typically 0.8 – 3.5 µg/ml.	
<b>Purity</b>	> 95 % SDS-PAGE. Purified by Immobilized metal affinity chromatography.	
<b>Endotoxin level</b>	< 1.000 Eu/µg	
<b>Expression system</b>	HEK 293 cells	
<b>Accession</b>	<b><u>P36222</u></b>	
<b>Protein length</b>	Full length protein	
<b>Animal free</b>	No	
<b>Nature</b>	Recombinant	
<b>Species</b>	Human	
<b>Sequence</b>	YKLVCYYTSWSQYREGDGSCFPDALDRFLCTHIIYSFANIS NDHIDTWEW NDVTLYGMLN TLKNRNPNLKTLLSVGGWNFGSQRFKIASNTQSRRTF IKSVPFLRTHGFDGLDLAWLY PGRRDQKHFTTLIKEMKAEFIKEAQP GKKQLLLSAALSAGKV/TIDSSYDIAKISQHLDFI SIMTYDFHGAWRGT TGHHSPLFRGQEDASPDRFSNTDYAVGYMLRLGAPASKL VMGIPTF GR SFTLASSETGVGAPISGPGIPGRFTKEAGTLAYYEICDFLR GATVHRILG QQVPYATK GNQWVGYDDQESVSKSVQYLKDRQLAGAMVWALDLDD FQG SFCGQDLRFPILTNAIKDALA AT	
<b>Predicted molecular weight</b>	41 kDa including tags	
<b>Amino acids</b>	22 to 383	
<b>Tags</b>	His tag C-Terminus	
<b>Additional sequence information</b>	Mature protein. NP_001267.	

## Specifications

---

Our **Abpromise guarantee** covers the use of **ab182706** in the following tested applications.

The application notes include recommended starting dilutions; optimal dilutions/concentrations should be determined by the end user.

<b>Applications</b>	Functional Studies SDS-PAGE
<b>Form</b>	Lyophilized
<b>Additional notes</b>	Previously labelled as CHI3L1.

## Preparation and Storage

---

<b>Stability and Storage</b>	Shipped at 4°C. Store at +4°C short term (1-2 weeks). Upon delivery aliquot. Store at -80°C. Avoid freeze / thaw cycle. For long term storage it is recommended to add a carrier protein on reconstitution (0.1% HSA or BSA).  pH: 7.40 Constituents: 95% PBS, 5% Trehalose  This product is an active protein and may elicit a biological response in vivo, handle with caution.
<b>Reconstitution</b>	Reconstitute with sterile deionized water to a concentration of 200 µg/ml.

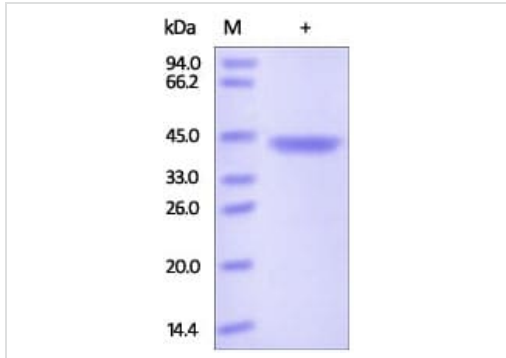
## General Info

---

<b>Function</b>	Carbohydrate-binding lectin with a preference for chitin. May play a role in defense against pathogens, or in tissue remodeling. May play an important role in the capacity of cells to respond to and cope with changes in their environment.
<b>Tissue specificity</b>	Present in activated macrophages, articular chondrocytes, synovial cells as well as in liver. Undetectable in muscle tissues, lung, pancreas, mononuclear cells, or fibroblasts.
<b>Involvement in disease</b>	A genetic variation in CHI3L1 is associated with susceptibility to asthma-related traits type 7 (ASRT7) [MIM:611960]. Asthma-related traits include clinical symptoms of asthma, such as coughing, wheezing and dyspnea, bronchial hyperresponsiveness (BHR) as assessed by methacholine challenge test, serum IgE levels, atopy, and atopic dermatitis.
<b>Sequence similarities</b>	Belongs to the glycosyl hydrolase 18 family.
<b>Post-translational modifications</b>	Glycosylated.
<b>Cellular localization</b>	Secreted > extracellular space.

## Images

---



SDS-PAGE - Recombinant human YKL-40/CHI3L1 protein (ab182706)

DTT-reduced (+) SDS-PAGE analysis of ab182706, staining overnight with Coomassie Blue.

**Please note:** All products are "FOR RESEARCH USE ONLY. NOT FOR USE IN DIAGNOSTIC PROCEDURES"

### Our Abpromise to you: Quality guaranteed and expert technical support

---

- Replacement or refund for products not performing as stated on the datasheet
- Valid for 12 months from date of delivery
- Response to your inquiry within 24 hours
  
- We provide support in Chinese, English, French, German, Japanese and Spanish
- Extensive multi-media technical resources to help you
- We investigate all quality concerns to ensure our products perform to the highest standards

If the product does not perform as described on this datasheet, we will offer a refund or replacement. For full details of the Abpromise, please visit <https://www.abcam.com/abpromise> or contact our technical team.

### Terms and conditions

---

- Guarantee only valid for products bought direct from Abcam or one of our authorized distributors