

## Product datasheet

# Recombinant Human ZDHHC9 protein ab162420

1 Image

### Description

---

<b>Product name</b>	Recombinant Human ZDHHC9 protein
<b>Expression system</b>	Wheat germ
<b>Protein length</b>	Full length protein
<b>Animal free</b>	No
<b>Nature</b>	Recombinant
<b>Species</b>	Human
<b>Sequence</b>	MSVMVVRKKVTRKWEKLPGRNTFCCDGRVMMARQKGIF YLTFLILGTCT LFFAFECRYLAVQLSPAIPVFAAMLFLFSMATLLRTSFSDP GVIPRALPD EAAFIEMEIEATNGAVPQQQRPPPRIKNFQINNQMVKLYCY TCKIFRPP RASHCSICDNCVERFDHHCPWWGNCVKGKRNRYFYLFILS LSLLTIYVFA FNVYVALKSLKIGFLETLPKTPGTVLEVLICFFTLWSVVGLT GFHTFLV ALNQTTNEDIKGSWTGKNRVQNPYSHGNVKNCCCEVLCG PLPPSVLDRRG ILPLEESGSRPPSTQETSSSLLPQSPAPTEHLNSNEMPED SSTPEEMPPP EPPEPPQEAEEAEK
<b>Amino acids</b>	1 to 364
<b>Tags</b>	GST tag N-Terminus

### Specifications

---

Our **Abpromise guarantee** covers the use of **ab162420** in the following tested applications.

The application notes include recommended starting dilutions; optimal dilutions/concentrations should be determined by the end user.

<b>Applications</b>	Western blot ELISA
<b>Form</b>	Liquid

### Additional notes

## Preparation and Storage

---

**Stability and Storage** Shipped on dry ice. Upon delivery aliquot and store at -80°C. Avoid freeze / thaw cycles.  
pH: 8.00  
Constituents: 0.31% Glutathione, 0.79% Tris HCl

## General Info

---

**Function** The ZDHHC9-GOLGA7 complex is a palmitoyltransferase specific for HRAS and NRAS.

**Tissue specificity** Highly expressed in kidney, skeletal muscle, brain, lung and liver. Absent in thymus, spleen and leukocytes.

**Involvement in disease** Defects in ZDHHC9 are the cause of mental retardation syndromic X-linked ZDHHC9-related (MRXSZ) [MIM:300799]. A disorder characterized by significantly sub-average general intellectual functioning associated with impairments in adaptive behavior and manifested during the developmental period. Some patients have marfanoid habitus as an additional feature.

**Sequence similarities** Belongs to the DHHC palmitoyltransferase family. ERF2/ZDHHC9 subfamily. Contains 1 DHHC-type zinc finger.

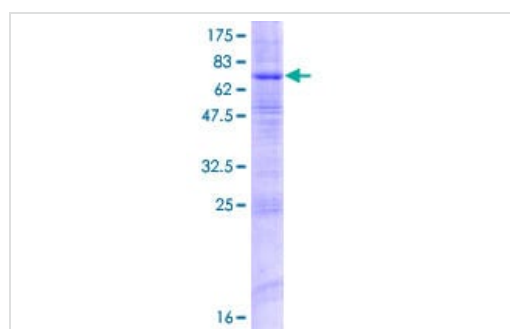
**Domain** The DHHC domain is required for palmitoyltransferase activity.

**Cellular localization** Endoplasmic reticulum membrane. Golgi apparatus membrane.

---

## Images

---



SDS-PAGE - Recombinant Human ZDHHC9 protein  
(ab162420)

ab162420 on a 12.5% SDS-PAGE stained with Coomassie Blue.

**Please note:** All products are "FOR RESEARCH USE ONLY. NOT FOR USE IN DIAGNOSTIC PROCEDURES"

## Our Abpromise to you: Quality guaranteed and expert technical support

---

- Replacement or refund for products not performing as stated on the datasheet
- Valid for 12 months from date of delivery
- Response to your inquiry within 24 hours

- We provide support in Chinese, English, French, German, Japanese and Spanish
- Extensive multi-media technical resources to help you
- We investigate all quality concerns to ensure our products perform to the highest standards

If the product does not perform as described on this datasheet, we will offer a refund or replacement. For full details of the Abpromise, please visit <https://www.abcam.com/abpromise> or contact our technical team.

### **Terms and conditions**

---

- Guarantee only valid for products bought direct from Abcam or one of our authorized distributors