

Product datasheet

Recombinant Lactate Dehydrogenase protein (Tagged) ab236188

1 Image

Description

Product name	Recombinant Lactate Dehydrogenase protein (Tagged)	
Purity	> 90 % SDS-PAGE.	
Expression system	Escherichia coli	
Accession	<u>Q7SI97</u>	
Protein length	Full length protein	
Animal free	No	
Nature	Recombinant	
Species	Plasmodium berghei	
Sequence	MAPKAKIVLVGSGMIGGVMATLIVQKNLGDVVMFDIVKNM PHGKALDTSH TNVMAYSNCKVSGSNTYDDLKDADVIVTAGFTKAPGKS DKEWNRDILLP LNNKIMEIGGHIKNNCPNAFIVVTNPVDVMVQLLHQHSGV PKNKIVGL GGVLDTSRLKYYISQKLNVCPRDVNAHIVGAHGKMKVLLK RYITVGGIPL QEFINKKITDQELDAIFDRTINTALEVNLHASPYVAPAAAI EMAESY IRDLRKVLICSTLLEGQYGHKDFAGTPLVIGGNGVEQVIEL QLNADEKK KFDEAVAETS RMKALI	
Predicted molecular weight	39 kDa including tags	
Amino acids	1 to 316	
Tags	Myc tag C-Terminus , 10x HIS tag N-Terminus	

Specifications

Our **Abpromise guarantee** covers the use of **ab236188** in the following tested applications.

The application notes include recommended starting dilutions; optimal dilutions/concentrations should be determined by the end user.

Applications SDS-PAGE

Form Liquid

Preparation and Storage

Stability and Storage Shipped at 4°C. Store at -20°C or -80°C. Avoid freeze / thaw cycle.
pH: 7.2
Constituents: Tris buffer, 50% Glycerol (glycerin, glycerine)

General Info

Pathway Fermentation; pyruvate fermentation to lactate; (S)-lactate from pyruvate: step 1/1.

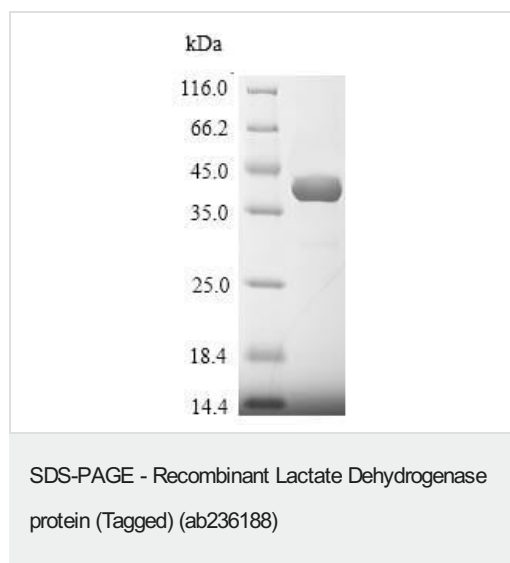
Involvement in disease Defects in LDHA are the cause of glycogen storage disease type 11 (GSD11) [MIM:612933]. A metabolic disorder that results in exertional myoglobinuria, pain, cramps and easy fatigue.

Sequence similarities Belongs to the LDH/MDH superfamily. LDH family.

Post-translational modifications ISGylated.

Cellular localization Cytoplasm.

Images



(Tris-Glycine gel) Discontinuous SDS-PAGE (reduced) analysis with 5% enrichment gel and 15% separation gel of ab236188.

Please note: All products are "FOR RESEARCH USE ONLY. NOT FOR USE IN DIAGNOSTIC PROCEDURES"

Our Abpromise to you: Quality guaranteed and expert technical support

- Replacement or refund for products not performing as stated on the datasheet
- Valid for 12 months from date of delivery
- Response to your inquiry within 24 hours
- We provide support in Chinese, English, French, German, Japanese and Spanish

- Extensive multi-media technical resources to help you
- We investigate all quality concerns to ensure our products perform to the highest standards

If the product does not perform as described on this datasheet, we will offer a refund or replacement. For full details of the Abpromise, please visit <https://www.abcam.com/abpromise> or contact our technical team.

Terms and conditions

- Guarantee only valid for products bought direct from Abcam or one of our authorized distributors