

Product datasheet

Recombinant Mouse AE binding protein 1 (His tag)  
ab225975

2 Images

Description

Product name	Recombinant Mouse AE binding protein 1 (His tag)
Purity	> 90 % SDS-PAGE.
Expression system	Escherichia coli
Accession	<u>Q640N1</u>
Protein length	Protein fragment
Animal free	No
Nature	Recombinant
Species	Mouse
Sequence	QTVLTDDEIEEFLEGFLSELETQSPPREDDVEVQPLPEPT QRPRKSKAGG KQRADVEVPPEKNKDKEKKGKKDKGPKATKPLEGSTRP TKKPKEKPPKAT KKPKEKPPKATKKPKEKPPKATKKPKEKPPKATKRPSAG KKFSTVAPLET LDRLSPSPSNPSAQELPQKRDTPFPNAWQQGGEETQVE AKQPRPEPEEET EMPTLDYNDQIEKEDYEDFEYIRRQKQPRPTPSRRRLWPE RPEEKTEEPE ERKEVEPPLKPLLPPDYGDSYVIPNYDDLDYYFPHPPPQK PDVGQEVDEE KEEMKKPKKEGSSPKEDTEDKWTVEKNKDHKGPRKGE ELEEEWAP
Predicted molecular weight	56 kDa including tags
Amino acids	26 to 370
Tags	His tag N-Terminus
Additional sequence information	6xHis-SUMO tag at the N-terminus.

Specifications

Our [Abpromise guarantee](#) covers the use of **ab225975** in the following tested applications.

The application notes include recommended starting dilutions; optimal dilutions/concentrations should be determined by the end user.

## Applications

SDS-PAGE

Mass Spectrometry

## Mass spectrometry

LC-MS/MS

## Form

Liquid

## Preparation and Storage

### Stability and Storage

Shipped at 4°C. Upon delivery aliquot. Store at -20°C or -80°C. Avoid freeze / thaw cycle.

pH: 7.2

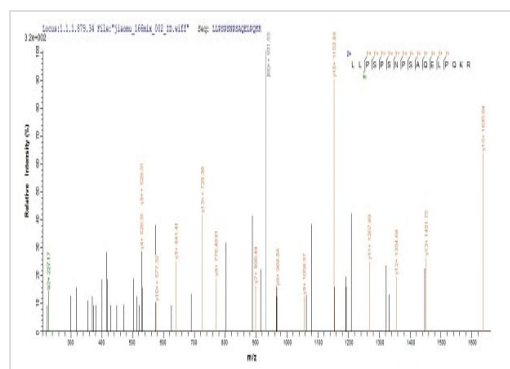
Constituents: 50% Glycerol (glycerin, glycerine), Tris buffer

## General Info

### Relevance

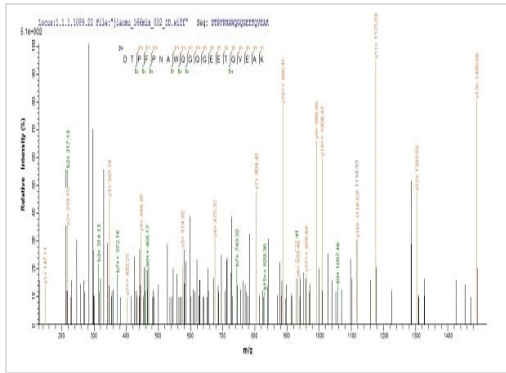
AEBP1 (adipocyte enhancer binding protein 1) is a transcriptional repressor which binds to the adipocyte enhancer 1 (AE-1) regulatory sequence, located in the proximal promoter region of the adipose P2 (aP2) gene. AEBP1 has carboxypeptidase (CP) activity and the direct binding of DNA to AEBP1 enhances its protease activity. AEBP1 expression is largely restricted to the aorta, particularly to smooth muscle cells.

## Images



Mass Spectrometry - Recombinant Mouse AE binding protein 1 (His tag) (ab225975)

Based on the SEQUEST from database of E.coli host and target protein, the LC-MS/MS analysis result of ab225975 could indicate that this peptide derived from E.coli-expressed Mus musculus (Mouse) AE binding protein 1.



Mass Spectrometry - Recombinant Mouse AE binding protein 1 (His tag) (ab225975)

Based on the SEQUEST from database of E.coli host and target protein, the LC-MS/MS analysis result of ab225975 could indicate that this peptide derived from E.coli-expressed Mus musculus (Mouse) AE binding protein 1.

**Please note:** All products are "FOR RESEARCH USE ONLY. NOT FOR USE IN DIAGNOSTIC PROCEDURES"

### Our Abpromise to you: Quality guaranteed and expert technical support

- Replacement or refund for products not performing as stated on the datasheet
- Valid for 12 months from date of delivery
- Response to your inquiry within 24 hours
- We provide support in Chinese, English, French, German, Japanese and Spanish
- Extensive multi-media technical resources to help you
- We investigate all quality concerns to ensure our products perform to the highest standards

If the product does not perform as described on this datasheet, we will offer a refund or replacement. For full details of the Abpromise, please visit <https://www.abcam.com/abpromise> or contact our technical team.

### Terms and conditions

- Guarantee only valid for products bought direct from Abcam or one of our authorized distributors