

Recombinant mouse Cathepsin D protein (Active)  
ab224786

1 Image

Description

Product name	Recombinant mouse Cathepsin D protein (Active)		
Biological activity	Specific activity is > 1,000 pmol/min/µg in which one unit will convert 1.0 pmole of MCA-PLGL-Dpa-AR-NH <sub>2</sub> to MCA-Pro-Leu-OH per minute at pH 3.5 at 25°C.		
Purity	> 90 % SDS-PAGE. Affinity purified		
Endotoxin level	< 1.000 Eu/µg		
Expression system	Baculovirus infected insect cells		
Accession	<b><u>P18242</u></b>		
Protein length	Full length protein		
Animal free	No		
Nature	Recombinant		
Species	Mouse		
Sequence	IIRIPLRKFTSIRRTMTEVGGSVEDLILKGPITKYSMQSSPKTT EPVSEL LKNYLDAQYYGDIGIGTPPQCFTVVFDTGSSNLWVPSIHCKI LDIACWVH HKYNSDKSSTYVKNGTSFDIHYGSGSLSGYLSQDTVSVPC KSDQSKARGI KVEKQIFGEATKQPGIVFAAKFDGILGMGYPHISVNNVLP VFDNLMQQK LVDKNISFYLNRPDPEGQPGGELMLGGTDSKYYHGELSYL NVTRKAYWQV HMDQLEVGNELTLCKGGCEAMDTGTSLLVGPVEEVKEL QKAIGAVPLIQ GEYMIPCEKVSSLPTVYLKLGKKNYELHPDKYILKVSQGGK TICLSGFMG MDIPPPSGPLWILGDVFIGSYYTVFDRDNNRVGFANAVVLL EHHHHHH		
Predicted molecular weight	44 kDa including tags		
Amino acids	21 to 410		
Tags	His tag C-Terminus		

**Additional sequence information** This product is the mature full length protein from aa 21 to 410 including the propeptide. The signal peptide is not included (NP\_034113).

## Specifications

---

Our **Abpromise guarantee** covers the use of **ab224786** in the following tested applications.

The application notes include recommended starting dilutions; optimal dilutions/concentrations should be determined by the end user.

**Applications** SDS-PAGE  
Functional Studies

**Form** Liquid

## Preparation and Storage

---

**Stability and Storage** Shipped at 4°C. Store at +4°C short term (1-2 weeks). Upon delivery aliquot. Store at -20°C or -80°C. Avoid freeze / thaw cycle.  
pH: 7.40  
Constituents: 10% Glycerol (glycerin, glycerine), PBS  
This product is an active protein and may elicit a biological response in vivo, handle with caution.

## General Info

---

**Function** Acid protease active in intracellular protein breakdown. Involved in the pathogenesis of several diseases such as breast cancer and possibly Alzheimer disease.

**Tissue specificity** Expressed in the aorta extracellular space (at protein level).

**Involvement in disease** Ceroid lipofuscinosis, neuronal, 10

**Sequence similarities** Belongs to the peptidase A1 family.  
Contains 1 peptidase A1 domain.

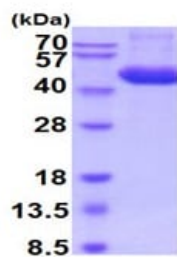
**Post-translational modifications** N- and O-glycosylated.

**Cellular localization** Lysosome. Melanosome. Secreted, extracellular space. Identified by mass spectrometry in melanosome fractions from stage I to stage IV. In aortic samples, detected as an extracellular protein loosely bound to the matrix (PubMed:20551380).

---

## Images

---



SDS-PAGE - Recombinant mouse Cathepsin D protein (Active) (ab224786)

15% SDS-PAGE analysis of 3 µg ab224786.

MW: 40-57 kDa (SDS-PAGE under reducing conditions).

**Please note:** All products are "FOR RESEARCH USE ONLY. NOT FOR USE IN DIAGNOSTIC PROCEDURES"

### Our Abpromise to you: Quality guaranteed and expert technical support

---

- Replacement or refund for products not performing as stated on the datasheet
- Valid for 12 months from date of delivery
- Response to your inquiry within 24 hours
- We provide support in Chinese, English, French, German, Japanese and Spanish
- Extensive multi-media technical resources to help you
- We investigate all quality concerns to ensure our products perform to the highest standards

If the product does not perform as described on this datasheet, we will offer a refund or replacement. For full details of the Abpromise, please visit <https://www.abcam.com/abpromise> or contact our technical team.

### Terms and conditions

---

- Guarantee only valid for products bought direct from Abcam or one of our authorized distributors