

Product datasheet

Recombinant Mouse Cathepsin S protein (His tag)
ab222431

1 Image

Description	
Product name	Recombinant Mouse Cathepsin S protein (His tag)
Purity	> 90 % SDS-PAGE. Affinity purified
Endotoxin level	< 1.000 Eu/µg
Expression system	Baculovirus infected insect cells
Accession	<u>O70370</u>
Protein length	Full length protein
Animal free	No
Nature	Recombinant
Species	Mouse
Sequence	VAMEQLQRDPTLDYHWDLWKKTHEKEYKDKNEEEVRLI WEKNLKFIMIH NLEYSMGMHTYQVGMNDMGDMTNEEISCRMGALRISRQS PKTVTFRSYSN RTLPTVDWREKGCVTEVKYQGSCGACWAFSAVGALEG QLKLKTGKLISL SAQNLVDCSNEEKYGNKGCGGGYMTEAFQYIIDNGGIEAD ASYPYKAMDE KCHYNSKNRAATCSRYQLPFGDEDALKEAVATKGPVSV GIDASHSSFFF YKSGVYDDPSCTGNVNHGVLVVGYGTLDGKDYWLKNS WGLNFGDQGYIR MARNNKNHCGIASYCSYPEILEHHHHHHDYWLKNSWGN FGDQGYIRMARNKNHCGIASYCSYPEILEHHHHHH
Predicted molecular weight	37 kDa including tags
Amino acids	21 to 340
Tags	His tag C-Terminus
Additional sequence information	This product is the full length protein from aa 21 to 340, containing the mature chain and the majority of the propeptide. The signal peptide is not included (NP_067256).

Specifications

Specifications

Our **Abpromise guarantee** covers the use of **ab222431** in the following tested applications.

The application notes include recommended starting dilutions; optimal dilutions/concentrations should be determined by the end user.

Applications SDS-PAGE

Form Liquid

Preparation and Storage

Stability and Storage Shipped at 4°C. Store at +4°C short term (1-2 weeks). Upon delivery aliquot. Store at -20°C or -80°C. Avoid freeze / thaw cycle.

pH: 7.40

Constituents: 10% Glycerol (glycerin, glycerine), PBS

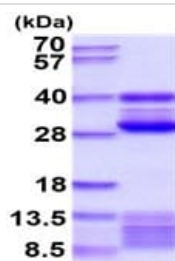
General Info

Function Thiol protease. Key protease responsible for the removal of the invariant chain from MHC class II molecules. The bond-specificity of this proteinase is in part similar to the specificities of cathepsin L and cathepsin N.

Sequence similarities Belongs to the peptidase C1 family.

Cellular localization Lysosome.

Images



15% SDS-PAGE analysis of 3 µg ab222431.

MWt 28-40 kDa (SDS-PAGE under reducing conditions).

SDS-PAGE - Recombinant Mouse Cathepsin S
protein (His tag) (ab222431)

Please note: All products are "FOR RESEARCH USE ONLY. NOT FOR USE IN DIAGNOSTIC PROCEDURES"

Our Abpromise to you: Quality guaranteed and expert technical support

- Replacement or refund for products not performing as stated on the datasheet
- Valid for 12 months from date of delivery
- Response to your inquiry within 24 hours
- We provide support in Chinese, English, French, German, Japanese and Spanish

- Extensive multi-media technical resources to help you
- We investigate all quality concerns to ensure our products perform to the highest standards

If the product does not perform as described on this datasheet, we will offer a refund or replacement. For full details of the Abpromise, please visit <https://www.abcam.com/abpromise> or contact our technical team.

Terms and conditions

- Guarantee only valid for products bought direct from Abcam or one of our authorized distributors