

Recombinant Mouse CCL21 protein ab269234

[1 Image](#)

Description

Product name	Recombinant Mouse CCL21 protein
Purity	> 95 % SDS-PAGE. NULL
Endotoxin level	< 1.000 Eu/μg
Expression system	Escherichia coli
Accession	<u>P84444</u>
Protein length	Full length protein
Animal free	No
Nature	Recombinant
Species	Mouse
Sequence	SDGGGQDCCL KYSQKKIPYS IVRGYRKQEP SLGCPIAIL FSPRKHSKPE LKANPEEGWV QNLMRRLDQP PAPGKQSPGC RKNRGTSKSG KKGKGSKGCK RTEQTQPSRG
Predicted molecular weight	15 kDa
Amino acids	24 to 133
Additional sequence information	Mature C-C motif chemokine 21a chain

Specifications

Our **Abpromise guarantee** covers the use of **ab269234** in the following tested applications.

The application notes include recommended starting dilutions; optimal dilutions/concentrations should be determined by the end user.

Applications	SDS-PAGE
Form	Lyophilized

Preparation and Storage

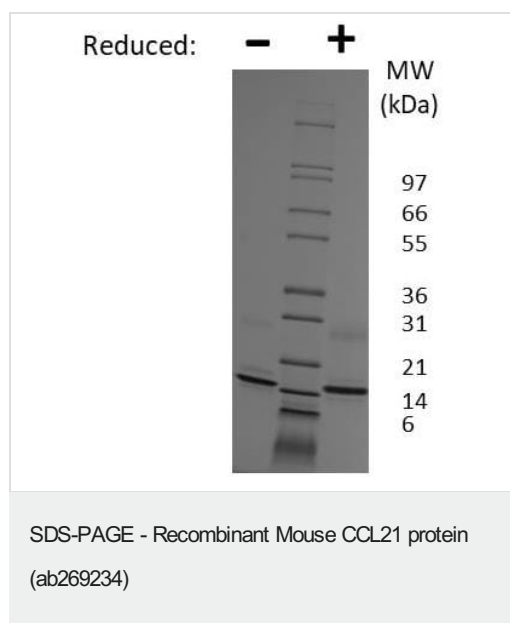
Stability and Storage	Shipped at Room Temperature. Upon delivery aliquot. Store at -20°C or -80°C. Working aliquots stored with a carrier protein are stable for at least 3 months at -20°C to -80°C.. Constituent: 0.1% Trifluoroacetic acid
------------------------------	----------------------------------------------------------------------------------------------------------------------------------------------------------------------------------------------------------------------------

	Lyophilized from
Reconstitution	Sterile water at 0.1 mg/mL

General Info

Function	Inhibits hemopoiesis and stimulates chemotaxis. Chemotactic in vitro for thymocytes and activated T-cells, but not for B-cells, macrophages, or neutrophils. Shows preferential activity towards naive T-cells. May play a role in mediating homing of lymphocytes to secondary lymphoid organs.
Tissue specificity	Highly expressed in high endothelial venules of lymph nodes, spleen and appendix. Intermediate levels found in small intestine, thyroid gland and trachea. Low level expression in thymus, bone marrow, liver, and pancreas. Also found in tonsil, fetal heart and fetal spleen.
Sequence similarities	Belongs to the intercrine beta (chemokine CC) family.
Cellular localization	Secreted.

Images



SDS-PAGE analysis of ab269234 at 1ug/lane under (-) non-reducing and (+) reducing conditions. 4-20% Tris glycine gel. Stained with coomassie blue.

Please note: All products are "FOR RESEARCH USE ONLY. NOT FOR USE IN DIAGNOSTIC PROCEDURES"

Our Abpromise to you: Quality guaranteed and expert technical support

- Replacement or refund for products not performing as stated on the datasheet
- Valid for 12 months from date of delivery
- Response to your inquiry within 24 hours
- We provide support in Chinese, English, French, German, Japanese and Spanish
- Extensive multi-media technical resources to help you
- We investigate all quality concerns to ensure our products perform to the highest standards

If the product does not perform as described on this datasheet, we will offer a refund or replacement. For full details of the Abpromise, please visit <https://www.abcam.com/abpromise> or contact our technical team.

Terms and conditions

- Guarantee only valid for products bought direct from Abcam or one of our authorized distributors