

## Product datasheet

# Recombinant mouse CCL25 protein (Active) ab243273

1 Image

### Description

---

<b>Product name</b>	Recombinant mouse CCL25 protein (Active)
<b>Biological activity</b>	Fully biologically active when compared to standard. The biological activity determined by a chemotaxis bioassay using human monocytes is in a concentration range of 5.0-50 ng/ml.
<b>Purity</b>	> 95 % SDS-PAGE. >95% as determined by SDS-PAGE and HPLC.
<b>Endotoxin level</b>	< 1.000 Eu/μg
<b>Expression system</b>	Escherichia coli
<b>Accession</b>	<b><u>O35903</u></b>
<b>Protein length</b>	Full length protein
<b>Animal free</b>	No
<b>Nature</b>	Recombinant
<b>Species</b>	Mouse
<b>Sequence</b>	QGAFEDCCLGYQHRIKWNVLRHARNYHQQEVSGSCNLRA VRFYFRQKVVC GNPEDMNVKRAIRILTARKRLVHWKSASDSQTERKKS NH MKSKVENPNST SVRSATLGHPRMVMMMPKTTN
<b>Predicted molecular weight</b>	14 kDa
<b>Amino acids</b>	24 to 144
<b>Additional sequence information</b>	Full length mature protein without the signal peptide.

### Specifications

---

Our **Abpromise guarantee** covers the use of **ab243273** in the following tested applications.

The application notes include recommended starting dilutions; optimal dilutions/concentrations should be determined by the end user.

<b>Applications</b>	SDS-PAGE Functional Studies HPLC
<b>Form</b>	Lyophilized
<b>Additional notes</b>	This product was previously labelled as TECK

This product was previously labelled as TECK

## Preparation and Storage

---

### Stability and Storage

Shipped at 4°C. Store at -80°C. Do Not Freeze.

Constituent: PBS

0.2 um filtered

This product is an active protein and may elicit a biological response in vivo, handle with caution.

### Reconstitution

We recommend that this vial be briefly centrifuged prior to opening to bring the contents to the bottom. Reconstitute in sterile distilled water or aqueous buffer containing 0.1 % BSA to a concentration of 0.1-1.0 mg/mL. Stock solutions should be apportioned into working aliquots and stored at = -20 °C. Further dilutions should be made in appropriate buffered solutions.

## General Info

---

### Function

Potentially involved in T-cell development. Recombinant protein shows chemotactic activity on thymocytes, macrophages, THP-1 cells, and dendritic cells but is inactive on peripheral blood lymphocytes and neutrophils. Binds to CCR9. Isoform 2 is an antagonist of isoform 1.

### Tissue specificity

Specifically expressed by thymic dendritic cells. High levels in thymus and small intestine.

### Sequence similarities

Belongs to the intercrine beta (chemokine CC) family.

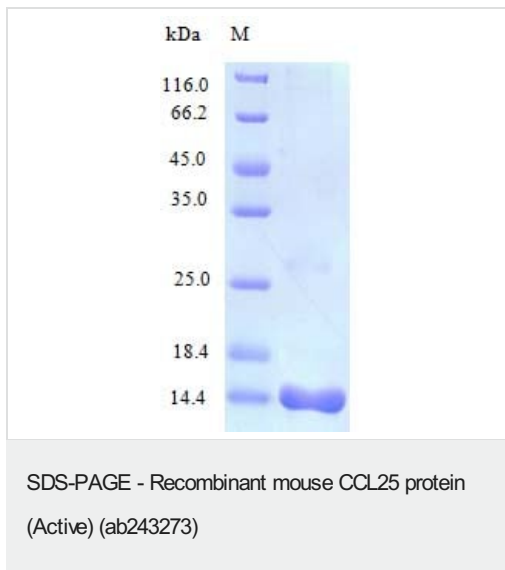
### Cellular localization

Secreted.

---

## Images

---



SDS-PAGE analysis of ab243273

**Please note:** All products are "FOR RESEARCH USE ONLY. NOT FOR USE IN DIAGNOSTIC PROCEDURES"

## **Our Abpromise to you: Quality guaranteed and expert technical support**

---

- Replacement or refund for products not performing as stated on the datasheet
- Valid for 12 months from date of delivery
- Response to your inquiry within 24 hours
  
- We provide support in Chinese, English, French, German, Japanese and Spanish
- Extensive multi-media technical resources to help you
- We investigate all quality concerns to ensure our products perform to the highest standards

If the product does not perform as described on this datasheet, we will offer a refund or replacement. For full details of the Abpromise, please visit <https://www.abcam.com/abpromise> or contact our technical team.

## **Terms and conditions**

---

- Guarantee only valid for products bought direct from Abcam or one of our authorized distributors