

Recombinant Mouse CD55 protein (His tag) ab219234

1 Image

Description

Product name	Recombinant Mouse CD55 protein (His tag)		
Purity	> 95 % SDS-PAGE. Affinity purified		
Endotoxin level	< 1.000 Eu/µg		
Expression system	Baculovirus infected insect cells		
Accession	Q61475		
Protein length	Full length protein		
Animal free	No		
Nature	Recombinant		
Species	Mouse		
Sequence	DCGPPPDIPNARPILGRHSKFAEQSKVAYSCNNGFKQVP DKSNMVCLEN GQWSSHETFCEKSCVAPERLSFASLKKEYLNMNFFPVGT IVEYECRPGFR KQPPLPGKATCLEDLVWSPVAQFCKKKSCPNPKDLDNG HINIPTGILFGS EINFSCNPGYRLVGVSSSTFCSVTGNTVDWDDEFPVCTEIH CPEPPKINNG IMRGESDSYTYSQVVITYSCDKGFILVGNASIYCTVSKSDVG QWSSPPPRC IEKSKVPTKKPTINVPSTGTPSTPQKPTTESVPNPGDQPTP QKPSTVKVS ATQHVPVTKTTVRHPIRTSTDKGEPNTGLEHHHHHH		
Predicted molecular weight	37 kDa including tags		
Amino acids	35 to 362		
Tags	His tag C-Terminus		
Additional sequence information	NCBI Accession No. NP_034146. Full-length recombinant mature protein without the signal peptide and propeptide.		

Specifications

Our **Abpromise guarantee** covers the use of **ab219234** in the following tested applications.

The application notes include recommended starting dilutions; optimal dilutions/concentrations should be determined by the end user.

Applications SDS-PAGE

Form Liquid

Preparation and Storage

Stability and Storage Shipped at 4°C. Store at +4°C short term (1-2 weeks). Upon delivery aliquot. Store at -20°C or -80°C. Avoid freeze / thaw cycle.

pH: 7.40

Constituents: 90% PBS, 10% Glycerol (glycerin, glycerine)

General Info

Function This protein recognizes C4b and C3b fragments that condense with cell-surface hydroxyl or amino groups when nascent C4b and C3b are locally generated during C4 and c3 activation. Interaction of daf with cell-associated C4b and C3b polypeptides interferes with their ability to catalyze the conversion of C2 and factor B to enzymatically active C2a and Bb and thereby prevents the formation of C4b2a and C3bBb, the amplification convertases of the complement cascade.

Tissue specificity Expressed on the plasma membranes of all cell types that are in intimate contact with plasma complement proteins. It is also found on the surfaces of epithelial cells lining extracellular compartments, and variants of the molecule are present in body fluids and in extracellular matrix.

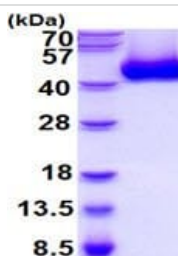
Sequence similarities Belongs to the receptors of complement activation (RCA) family.
Contains 4 Sushi (CCP/SCR) domains.

Domain The first Sushi domain (SCR1) is not necessary for function. SCR2 and SCR4 provide the proper conformation for the active site on SCR3.

Post-translational modifications The Ser/Thr-rich domain is heavily O-glycosylated.

Cellular localization Cell membrane.

Images



15% SDS-PAGE analysis of ab219234 (3 µg).

SDS-PAGE - Recombinant Mouse CD55 protein
(His tag) (ab219234)

Please note: All products are "FOR RESEARCH USE ONLY. NOT FOR USE IN DIAGNOSTIC PROCEDURES"

Our Abpromise to you: Quality guaranteed and expert technical support

- Replacement or refund for products not performing as stated on the datasheet
- Valid for 12 months from date of delivery
- Response to your inquiry within 24 hours

- We provide support in Chinese, English, French, German, Japanese and Spanish
- Extensive multi-media technical resources to help you
- We investigate all quality concerns to ensure our products perform to the highest standards

If the product does not perform as described on this datasheet, we will offer a refund or replacement. For full details of the Abpromise, please visit <https://www.abcam.com/abpromise> or contact our technical team.

Terms and conditions

- Guarantee only valid for products bought direct from Abcam or one of our authorized distributors