

Product datasheet

Recombinant Mouse CELA2A protein (His tag)
ab235732

1 Image

Description	
Product name	Recombinant Mouse CELA2A protein (His tag)
Purity	> 90 % SDS-PAGE.
Expression system	Escherichia coli
Accession	<u>P05208</u>
Protein length	Full length protein
Animal free	No
Nature	Recombinant
Species	Mouse
Sequence	VVGGQEATPNTWPWQVSLQVLSSGRWRHNCGGSLVAN NWWLTAAHCLSNY QTYRVLLGAHSLSNPGAGSAAVQVSKLVVHQRWNSQNV GNGYDIALIKLA SPVTLSKNIQTACLPPAGTILPRNYVCYVTGWGLLQTNGNS PDTLRQGRL LVVDYATCSSASWWGSSVKSSMVCAGGDGVTSSCNGD SGGPLNCRASNGQ WQVHGVSFGSSLGCNYPKPSVFTRVSNYIDWINSVMAR N
Predicted molecular weight	30 kDa including tags
Amino acids	31 to 271
Tags	His tag N-Terminus
Additional sequence information	Full length mature protein without the signal peptide (1-16aa) and without propeptide (17-30aa). N-terminal 6xHis-tagged.

Specifications	
Our <u>Abpromise guarantee</u> covers the use of ab235732 in the following tested applications.	
The application notes include recommended starting dilutions; optimal dilutions/concentrations should be determined by the end user.	
Applications	SDS-PAGE

Form Liquid

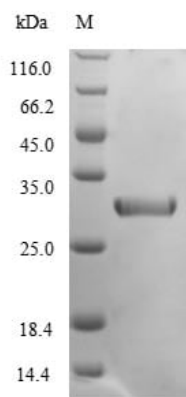
Preparation and Storage

Stability and Storage Shipped at 4°C. Store at -20°C or -80°C. Avoid freeze / thaw cycle.
pH: 7.2
Constituents: Tris buffer, 50% Glycerol (glycerin, glycerine)

General Info

Function Acts upon elastin.
Tissue specificity Pancreas.
Sequence similarities Belongs to the peptidase S1 family. Elastase subfamily.
Contains 1 peptidase S1 domain.
Cellular localization Secreted.

Images



(Tris-Glycine gel) Discontinuous SDS-PAGE (reduced) with 5% enrichment gel and 15% separation gel using ab235732.

SDS-PAGE - Recombinant Mouse CELA2A protein
(His tag) (ab235732)

Please note: All products are "FOR RESEARCH USE ONLY. NOT FOR USE IN DIAGNOSTIC PROCEDURES"

Our Abpromise to you: Quality guaranteed and expert technical support

- Replacement or refund for products not performing as stated on the datasheet
- Valid for 12 months from date of delivery
- Response to your inquiry within 24 hours
- We provide support in Chinese, English, French, German, Japanese and Spanish
- Extensive multi-media technical resources to help you

- We investigate all quality concerns to ensure our products perform to the highest standards

If the product does not perform as described on this datasheet, we will offer a refund or replacement. For full details of the Abpromise, please visit <https://www.abcam.com/abpromise> or contact our technical team.

Terms and conditions

- Guarantee only valid for products bought direct from Abcam or one of our authorized distributors