

## Product datasheet

# Recombinant Mouse CR1L protein (His tag) ab238362

1 Image

### Description

<b>Product name</b>	Recombinant Mouse CR1L protein (His tag)	
<b>Purity</b>	> 85 % SDS-PAGE.	
<b>Expression system</b>	Escherichia coli	
<b>Accession</b>	<u><b>Q64735</b></u>	
<b>Protein length</b>	Protein fragment	
<b>Animal free</b>	No	
<b>Nature</b>	Recombinant	
<b>Species</b>	Mouse	
<b>Sequence</b>	ELRGGLGKHGHTVHREPAVNRLCADSKRWSGLPVSAQR PFPMGHCAPSQ LPSAKPINLTDESMFPIGYLLYECLPGYIKRQFSITCKQDST W TSAEDK CIRKQCKTPSDPENGLVHVHTGIQFGSRINYTCNQQYRLIG SSSAVCVIT DQSVDDWTEAPICEWIPCEIPPGIPNGDFFSSTREDFHYG MVV TYRCNTD ARGKALFNLVGEP SLYCTSNDGEIGVWSGPPPQCIELNKC T P P P Y V E N A V MLSENRSLSLRDIVEFRCHPGFIMKGASSVHCQSLNKW EPELPSCFKGV ICRLPQEMSGFQKGLGMKKEYYYGENVTLECEDGYTLEG SSQSQCQSDGS WNPLLAKCVSRISIG	
<b>Predicted molecular weight</b>	45 kDa including tags	
<b>Amino acids</b>	41 to 405	
<b>Tags</b>	His tag N-Terminus	

### Specifications

Our **Abpromise guarantee** covers the use of **ab238362** in the following tested applications.

The application notes include recommended starting dilutions; optimal dilutions/concentrations should be determined by the end user.

**Applications** SDS-PAGE

**Form** Liquid

## Preparation and Storage

---

**Stability and Storage** Shipped at 4°C. Store at -20°C or -80°C. Avoid freeze / thaw cycle.  
pH: 7.2  
Constituents: Tris buffer, 50% Glycerol (glycerin, glycerine)

## General Info

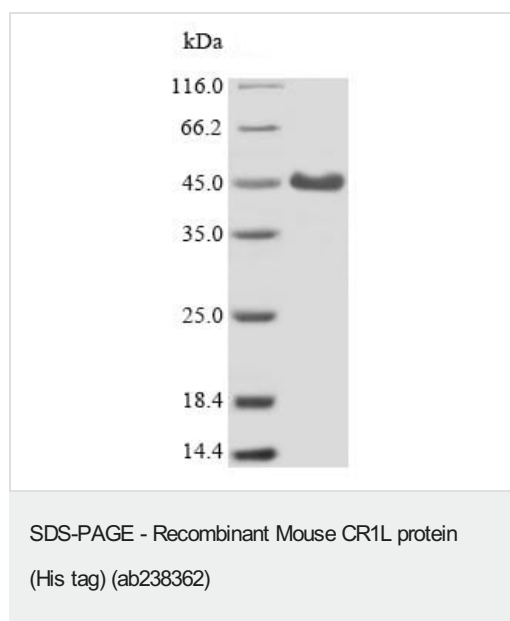
---

**Relevance** Interacts with iC4 (methylamine-treated C4) but not for iC3 (methylamine-treated C3). Belongs to the receptors of complement activation (RCA) family. Contains 8 Sushi (CCP/SCR) domains.

**Cellular localization** Cytoplasm. Membrane. Secreted. Note: Predominantly found in association with the membrane fraction, but also located in the cytoplasm and in the supernatant.

## Images

---



(Tris-Glycine gel) Discontinuous SDS-PAGE (reduced) analysis with 5% enrichment gel and 15% separation gel of ab238362.

**Please note:** All products are "FOR RESEARCH USE ONLY. NOT FOR USE IN DIAGNOSTIC PROCEDURES"

## Our Abpromise to you: Quality guaranteed and expert technical support

---

- Replacement or refund for products not performing as stated on the datasheet
- Valid for 12 months from date of delivery
- Response to your inquiry within 24 hours
- We provide support in Chinese, English, French, German, Japanese and Spanish
- Extensive multi-media technical resources to help you
- We investigate all quality concerns to ensure our products perform to the highest standards

If the product does not perform as described on this datasheet, we will offer a refund or replacement. For full details of the Abpromise, please visit <https://www.abcam.com/abpromise> or contact our technical team.

### **Terms and conditions**

---

- Guarantee only valid for products bought direct from Abcam or one of our authorized distributors