

Recombinant mouse ERp57 protein (Active) ab222976

1 Image

Description

Product name	Recombinant mouse ERp57 protein (Active)	
Biological activity	Specific activity is >10 A650/cm/min/mg, obtained by measuring the increase of insulin precipitation in absorbance at 650nm resulting from the reduction of insulin.	
Purity	> 95 % SDS-PAGE. ab222976 was purified by using conventional chromatography techniques.	
Endotoxin level	< 1.000 Eu/μg	
Expression system	Escherichia coli	
Accession	<u>P27773</u>	
Protein length	Full length protein	
Animal free	No	
Nature	Recombinant	
Species	Mouse	
Sequence	<pre> MGSSHHHHHH SSGLVPRGSH MGSMSDVLEL TDENFESRVS DTGSAGLMLV EFFAPWCGHC KRLAPEYEEA ATRLKGMPL AKVDCTANTN TCNKYGVSGY PTLKIFRDGE EAGAYDGPRT ADGIVSHLKK QAGPASVPLR TEEEFKKFIS DKDASVVGFF RDLFSDGHSE FLKAASNLRD NYRFAHTNIE SLVKEYDDNG EGITIFRPLH LANKFEDKTV AYTEKKMTSG KIKKFIQDSI FGLCPHMTED NKDLIQGKDL LTAYYDVDYE KNAKGSNYWR NRVMVAKKF LDAGHKLNFA VASRKTFSHE LSDFGLESTT GEVPVVAIRT AKGEKFVMQE EFSRDGKALE QFLQEYFDGN LKRYLKSEPI PESNEGPVKV VVAENFDDIV NEEDKDVLE FYAPWCGHCK NLEPKYKELG EKLSKDPNV IAKMDATAND VPSPYEVKGF PTYFSPANK KLTPKKYEGG RELNDFISYL QREATNPPII QEEKPKKKKK AQEDL </pre>	
Predicted molecular weight	57 kDa including tags	
Amino acids	25 to 505	
Tags	His tag N-Terminus	
Additional sequence information	Full length mature chain without signal peptide.	

Specifications

Our **Abpromise guarantee** covers the use of **ab222976** in the following tested applications.

The application notes include recommended starting dilutions; optimal dilutions/concentrations should be determined by the end user.

Applications

- Mass Spectrometry
- Functional Studies
- SDS-PAGE

Form Liquid

Preparation and Storage

Stability and Storage Shipped at 4°C. Store at +4°C short term (1-2 weeks). Upon delivery aliquot. Store at -20°C or -80°C. Avoid freeze / thaw cycle.

pH: 8.00

Constituents: 0.32% Tris HCl, 0.0154% DTT, 0.58% Sodium chloride, 10% Glycerol (glycerin, glycerine)

This product is an active protein and may elicit a biological response in vivo, handle with caution.

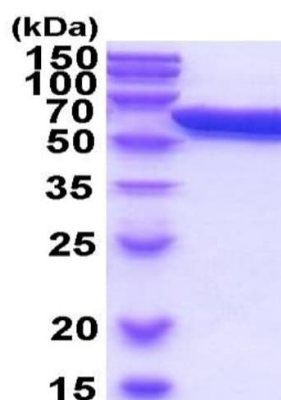
General Info

Tissue specificity Detected in the flagellum and head region of spermatozoa (at protein level).

Sequence similarities Belongs to the protein disulfide isomerase family.
Contains 2 thioredoxin domains.

Cellular localization Endoplasmic reticulum lumen. Melanosome. Identified by mass spectrometry in melanosome fractions from stage I to stage IV.

Images



15% SDS-PAGE - Recombinant mouse ERp57 protein (Active)
(3 µg ab222976).

SDS-PAGE - Recombinant mouse ERp57 protein
(Active) (ab222976)

Please note: All products are "FOR RESEARCH USE ONLY. NOT FOR USE IN DIAGNOSTIC PROCEDURES"

Our Abpromise to you: Quality guaranteed and expert technical support

- Replacement or refund for products not performing as stated on the datasheet
- Valid for 12 months from date of delivery
- Response to your inquiry within 24 hours

- We provide support in Chinese, English, French, German, Japanese and Spanish
- Extensive multi-media technical resources to help you
- We investigate all quality concerns to ensure our products perform to the highest standards

If the product does not perform as described on this datasheet, we will offer a refund or replacement. For full details of the Abpromise, please visit <https://www.abcam.com/abpromise> or contact our technical team.

Terms and conditions

- Guarantee only valid for products bought direct from Abcam or one of our authorized distributors