

Product datasheet

Recombinant mouse G-CSF protein (Active) ab269226

1 Image

Description	
Product name	Recombinant mouse G-CSF protein (Active)
Biological activity	NFS-60 cell proliferation ≤50 pg/mL; ≥ 2.0 x 10^7 units/mg.
Purity	> 95 % SDS-PAGE. NULL
Endotoxin level	< 1.000 Eu/μg
Expression system	Escherichia coli
Accession	<b><u>P09920</u></b>
Protein length	Full length protein
Animal free	No
Nature	Recombinant
Species	Mouse
Sequence	MVPLVTVSAL PPSLPLPRSF LLKSLEQVRK IQASGSVLL EQLCATYKLCH PEELVLLGHS LGIPKASLSG CSSQALQQTQ CLSQLHSGLC LYQGILLQALS GISPALAPTL DLLQLDVANF ATTIWQQMEN LGVAPTVQPT QSAMPAFTSA FQRRAGGVLA ISYLQGFLET ARLALHHLA
Predicted molecular weight	22 kDa
Amino acids	31 to 208
Additional sequence information	Mature chain

Specifications	
Our <b><u>Abpromise guarantee</u></b> covers the use of <b>ab269226</b> in the following tested applications.	
The application notes include recommended starting dilutions; optimal dilutions/concentrations should be determined by the end user.	
Applications	Functional Studies SDS-PAGE
Form	Lyophilized

Preparation and Storage

## Stability and Storage

Shipped at Room Temperature. Upon delivery aliquot. Store at -20°C or -80°C. Working aliquots stored with a carrier protein are stable for at least 3 months at -20°C to -80°C..

Constituent: 0.29% Sodium citrate

Lyophilized from

This product is an active protein and may elicit a biological response in vivo, handle with caution.

## Reconstitution

Sterile water at 0.1 mg/mL

## General Info

### Function

Granulocyte/macrophage colony-stimulating factors are cytokines that act in hematopoiesis by controlling the production, differentiation, and function of 2 related white cell populations of the blood, the granulocytes and the monocytes-macrophages. This CSF induces granulocytes.

### Sequence similarities

Belongs to the IL-6 superfamily.

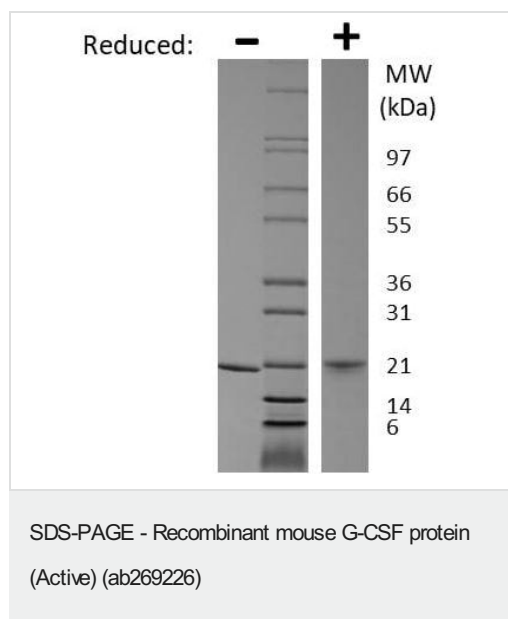
### Post-translational modifications

O-glycan consists of Gal-GalNAc disaccharide which can be modified with up to two sialic acid residues (done in recombinantly expressed G-CSF from CHO cells).

### Cellular localization

Secreted.

## Images



SDS-PAGE analysis of ab269226 at 1ug/lane under (-) non-reducing and (+) reducing conditions. 4-20% Tris glycine gel. Stained with coomassie blue.

**Please note:** All products are "FOR RESEARCH USE ONLY. NOT FOR USE IN DIAGNOSTIC PROCEDURES"

## Our Abpromise to you: Quality guaranteed and expert technical support

- Replacement or refund for products not performing as stated on the datasheet
- Valid for 12 months from date of delivery
- Response to your inquiry within 24 hours

- We provide support in Chinese, English, French, German, Japanese and Spanish
- Extensive multi-media technical resources to help you
- We investigate all quality concerns to ensure our products perform to the highest standards

If the product does not perform as described on this datasheet, we will offer a refund or replacement. For full details of the Abpromise, please visit <https://www.abcam.com/abpromise> or contact our technical team.

#### **Terms and conditions**

---

- Guarantee only valid for products bought direct from Abcam or one of our authorized distributors