

Product datasheet

Recombinant mouse IL-6 protein (Active) ab208475

[2 Images](#)

Description

Product name	Recombinant mouse IL-6 protein (Active)
Biological activity	Measured in a cell proliferation assay using M-NFS-60 mouse B cell. The ED50 for this effects is less or equal to 0.1 ng/ml.
Purity	> 95 % SDS-PAGE. Affinity purified
Endotoxin level	< 1.000 Eu/μg
Expression system	Insect cells
Accession	<u>P08505</u>
Protein length	Full length protein
Animal free	No
Nature	Recombinant
Species	Mouse
Sequence	FPTSQVRRGDFTEDTTPNRPVYTTSQVGGLITHVLWEIVE MRKELCNGNS DCMNNDDALAENNKLPEIQRNDGCYQTGYNQEICLLKISS GLLEYHSYL EYMKNNLKDNDKKDKARVLQRDTETLIHIFNQEVKDLHKIVL PTPISNALL TDKLESQKEWLRTKTIQFILKSLEEFLKVTLRSTRQTHHHH HH
Predicted molecular weight	23 kDa including tags
Amino acids	25 to 211
Tags	His tag C-Terminus
Additional sequence information	Mature protein without the signal peptide. NP_112445

Specifications

Our **Abpromise guarantee** covers the use of **ab208475** in the following tested applications.

The application notes include recommended starting dilutions; optimal dilutions/concentrations should be determined by the end user.

Applications	Mass Spectrometry
	SDS-PAGE

Mass spectrometry	MALDI-TOF
Form	Liquid

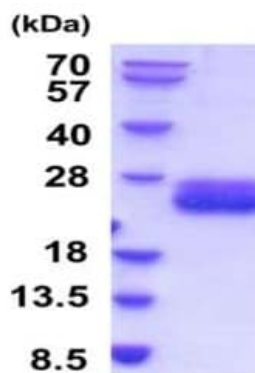
Preparation and Storage

Stability and Storage	<p>Shipped at 4°C. Store at +4°C short term (1-2 weeks). Upon delivery aliquot. Store at -20°C or -80°C. Avoid freeze / thaw cycle.</p> <p>pH: 7.40</p> <p>Constituents: 10% Glycerol (glycerin, glycerine), 90% PBS</p> <p>This product is an active protein and may elicit a biological response in vivo, handle with caution.</p>
------------------------------	--------------------------------------------------------------------------------------------------------------------------------------------------------------------------------------------------------------------------------------------------------------------------------------------------------------------------------------

General Info

Function	<p>Cytokine with a wide variety of biological functions. It is a potent inducer of the acute phase response. Plays an essential role in the final differentiation of B-cells into Ig-secreting cells. Involved in lymphocyte and monocyte differentiation. It induces myeloma and plasmacytoma growth and induces nerve cells differentiation. Acts on B-cells, T-cells, hepatocytes, hematopoietic progenitor cells and cells of the CNS. Also acts as a myokine. It is discharged into the bloodstream after muscle contraction and acts to increase the breakdown of fats and to improve insulin resistance.</p>
Involvement in disease	<p>Genetic variations in IL6 are associated with susceptibility to rheumatoid arthritis systemic juvenile (RASJ) [MIM:604302]. An inflammatory articular disorder with systemic-onset beginning before the age of 16. It represents a subgroup of juvenile arthritis associated with severe extraarticular features and occasionally fatal complications. During active phases of the disorder, patients display a typical daily spiking fever, an evanescent macular rash, lymphadenopathy, hepatosplenomegaly, serositis, myalgia and arthritis.</p> <p>Note=A IL6 promoter polymorphism is associated with a lifetime risk of development of Kaposi sarcoma in HIV-infected men.</p>
Sequence similarities	Belongs to the IL-6 superfamily.
Post-translational modifications	N- and O-glycosylated.
Cellular localization	Secreted.

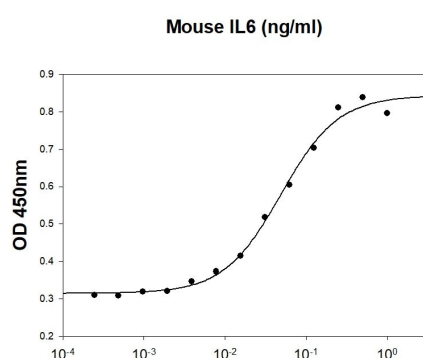
Images



SDS-PAGE - Recombinant mouse IL-6 protein
(Active) (ab208475)

15% SDS-PAGE analysis of 3 µg of ab208475.

18-28 kDa (SDS-PAGE under reducing conditions).



Biological activity - Recombinant mouse IL-6 protein
(Active) (ab208475)

Biological activity of ab208475 measured in a cell proliferation assay using M-NFS-60 mouse B cell. The ED50 for this effects is less or equal to 0.1 ng/mL.

Please note: All products are "FOR RESEARCH USE ONLY. NOT FOR USE IN DIAGNOSTIC PROCEDURES"

Our Abpromise to you: Quality guaranteed and expert technical support

- Replacement or refund for products not performing as stated on the datasheet
- Valid for 12 months from date of delivery
- Response to your inquiry within 24 hours
- We provide support in Chinese, English, French, German, Japanese and Spanish
- Extensive multi-media technical resources to help you
- We investigate all quality concerns to ensure our products perform to the highest standards

If the product does not perform as described on this datasheet, we will offer a refund or replacement. For full details of the Abpromise, please visit <https://www.abcam.com/abpromise> or contact our technical team.

Terms and conditions

- Guarantee only valid for products bought direct from Abcam or one of our authorized distributors