

Product datasheet

Recombinant Mouse Kallikrein 14 protein (Tagged) ab239444

[1 Image](#)

Description

Product name	Recombinant Mouse Kallikrein 14 protein (Tagged)
Purity	> 90 % SDS-PAGE.
Expression system	Escherichia coli
Accession	<u>Q8CGR5</u>
Protein length	Full length protein
Animal free	No
Nature	Recombinant
Species	Mouse
Sequence	IIGGYRCVRNSQPWQVALQAGPGHRFLCGGVLLSDQWVIT AAHCARPILH VALGKHNIRRWEATQQVVRVARQVPHQYQQAHDNDL MLLKLQKKVRLG RAVKTISVASSCASPCTPCRVSQWGTIASPIARYPTALQC VNVNIMSEQA CHRAYPGIITSGMV/CAGVPEGGKDSCQGDSSGGLVCGG QLQGLVSWGMR CAMPGYPGVYANLCNYHSWIQRMTQSN
Predicted molecular weight	41 kDa including tags
Amino acids	24 to 250
Tags	His tag N-Terminus
Additional sequence information	Full-length mature chain lacking the signal peptide and pro-peptide. N-terminal 6xHis-SUMO-tagged.

Specifications

Our **Abpromise guarantee** covers the use of **ab239444** in the following tested applications.

The application notes include recommended starting dilutions; optimal dilutions/concentrations should be determined by the end user.

Applications SDS-PAGE

Form Liquid

Preparation and Storage

Stability and Storage

Shipped at 4°C. Store at -20°C or -80°C. Avoid freeze / thaw cycle.

pH: 7.2

Constituents: Tris buffer, 50% Glycerol (glycerin, glycerine)

General Info

Function

Serine-type endopeptidase with a dual trypsin-like and chymotrypsin-like substrate specificity. May activate/inactivate the proteinase-activated receptors F2R, F2RL1 and F2RL3 and other kallikreins including KLK1, KLK3, KLK5 and KLK11. May function in seminal clot liquefaction through direct cleavage of the semenogelin SEMG1 and SEMG2 and activation of KLK3. May function through desmoglein DSG1 cleavage in epidermal desquamation a process by which the most superficial corneocytes are shed from the skin surface. May be involved in several aspects of tumor progression including growth, invasion and angiogenesis.

Tissue specificity

Highly expressed in CNS, bone marrow and fetal liver. Also expressed in breast, thyroid, kidney, colon, pancreas, spleen, prostate, uterus, small intestine, placenta and skeletal muscle. Among 40 tissues tested, the highest expression is detected in skin followed by breast and prostate (at protein level). Expressed in stratum corneum by sweat ducts and sweat glands and detected in sweat (at protein level).

Sequence similarities

Belongs to the peptidase S1 family. Kallikrein subfamily.

Contains 1 peptidase S1 domain.

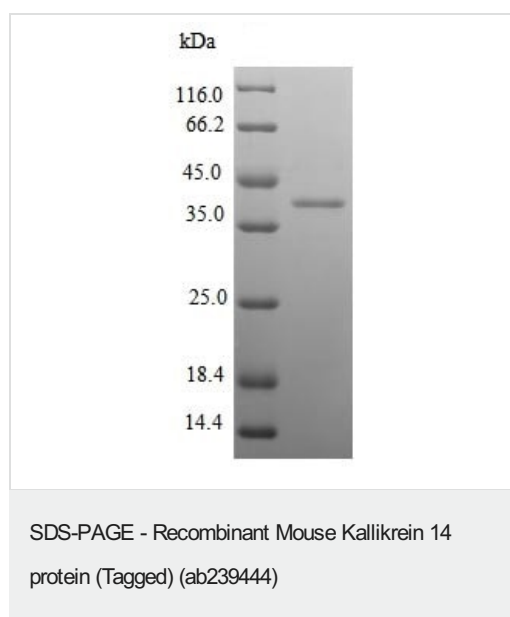
Post-translational modifications

Proteolytic cleavage of the activation peptide produces the active enzyme.

Cellular localization

Secreted > extracellular space.

Images



ab239444 analyzed by (Tris-Glycine gel) discontinuous SDS-PAGE (reduced) with 5% enrichment gel and 15% separation gel.

Please note: All products are "FOR RESEARCH USE ONLY. NOT FOR USE IN DIAGNOSTIC PROCEDURES"

Our Abpromise to you: Quality guaranteed and expert technical support

- Replacement or refund for products not performing as stated on the datasheet
- Valid for 12 months from date of delivery
- Response to your inquiry within 24 hours

- We provide support in Chinese, English, French, German, Japanese and Spanish
- Extensive multi-media technical resources to help you
- We investigate all quality concerns to ensure our products perform to the highest standards

If the product does not perform as described on this datasheet, we will offer a refund or replacement. For full details of the Abpromise, please visit <https://www.abcam.com/abpromise> or contact our technical team.

Terms and conditions

- Guarantee only valid for products bought direct from Abcam or one of our authorized distributors