

Recombinant Mouse LRPAP1 protein ab201883

1 Image

Description	
Product name	Recombinant Mouse LRPAP1 protein
Purity	> 90 % SDS-PAGE. ab201883 was purified by using conventional chromatography techniques.
Expression system	Escherichia coli
Accession	<u>P55302</u>
Protein length	Full length protein
Animal free	No
Nature	Recombinant
Species	Mouse
Sequence	MGSSHHHHHH SSGLVPRGSH MGSQPIAGHG GKYSREKNEP EMAAKRESGE EFRMEKLNQL WEKAKRLHLS PVRLAELHSD LKIQERDELN WKKLKVEGLD KDGEKEAKLI HNLNVILARY GLDGRKDAQM VHSNALNEDT QDELGDPRLE KLWHKAKTSG KFSSEELDKL WREFLHYKEK IQEYNVLLDT LSRAEEGYEN LLSPSDMAHIKSDLISKHS ELKDRLRSIN QGLDRLRKVS HQGYGSTTEF EPRVIDLWD LAQSANFTEK ELESFREEELK HFEAKIEKHN HYQKQLEISH QKLKHVESIG DPEHISRNKE KYVLLEEKTK ELGYKVKKHL QDLSSRVSRA RHNEL
Predicted molecular weight	41 kDa including tags
Amino acids	29 to 360
Tags	His tag N-Terminus
Additional sequence information	This product is for the mature full length protein from aa 29 to 360. The signal peptide is not included. (NP_038615)

Specifications

Our **Abpromise guarantee** covers the use of **ab201883** in the following tested applications.

The application notes include recommended starting dilutions; optimal dilutions/concentrations should be determined by the end user.

Applications	Mass Spectrometry
	SDS-PAGE

Mass spectrometry	MALDI-TOF
Form	Liquid

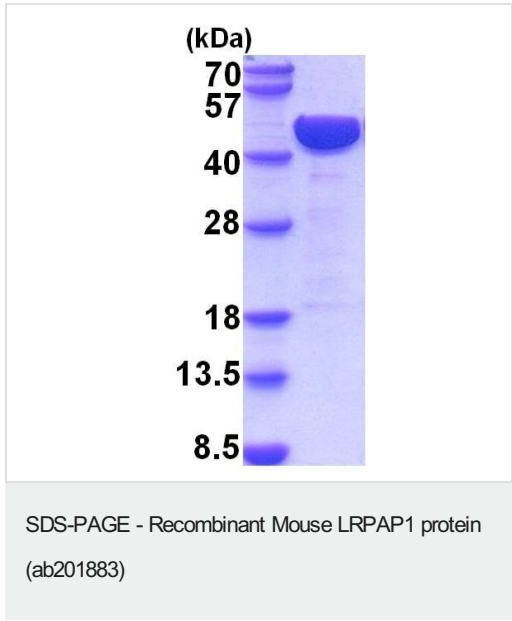
Preparation and Storage

Stability and Storage	<p>Shipped at 4°C. Store at +4°C short term (1-2 weeks). Upon delivery aliquot. Store at -20°C or -80°C. Avoid freeze / thaw cycle.</p> <p>pH: 7.40</p> <p>Constituents: 90% PBS, 10% Glycerol (glycerin, glycerine)</p>
------------------------------	--

General Info

Function	Interacts with LRP1/alpha-2-macroglobulin receptor and glycoprotein 330.
Involvement in disease	Note=In complex with the alpha-2-MR or gp330, it may have some role in the pathogenesis of membrane glomerular nephritis.
Sequence similarities	Belongs to the alpha-2-MRAP family.
Post-translational modifications	N-glycosylated.
Cellular localization	Endoplasmic reticulum. Cytoplasm. Cell surface. Intracellular and associated with cell surface receptors. Found in the endoplasmic reticulum.

Images



15% SDS PAGE analysis of ab201883 (3 µg).

Please note: All products are "FOR RESEARCH USE ONLY. NOT FOR USE IN DIAGNOSTIC PROCEDURES"

Our Abpromise to you: Quality guaranteed and expert technical support

- Replacement or refund for products not performing as stated on the datasheet
- Valid for 12 months from date of delivery
- Response to your inquiry within 24 hours
- We provide support in Chinese, English, French, German, Japanese and Spanish
- Extensive multi-media technical resources to help you
- We investigate all quality concerns to ensure our products perform to the highest standards

If the product does not perform as described on this datasheet, we will offer a refund or replacement. For full details of the Abpromise, please visit <https://www.abcam.com/abpromise> or contact our technical team.

Terms and conditions

- Guarantee only valid for products bought direct from Abcam or one of our authorized distributors