

## Product datasheet

# Recombinant Mouse Lysophospholipase 1/LPL-I protein ab101156

1 Image

### Description

<b>Product name</b>	Recombinant Mouse Lysophospholipase 1/LPL-I protein	
<b>Purity</b>	> 90 % SDS-PAGE. ab101156 is purified using conventional chromatography techniques.	
<b>Expression system</b>	Escherichia coli	
<b>Accession</b>	<b><u>P97823</u></b>	
<b>Protein length</b>	Full length protein	
<b>Animal free</b>	No	
<b>Nature</b>	Recombinant	
<b>Species</b>	Mouse	
<b>Sequence</b>	MGSSHHHHHHSSGLVPRGSHMCGNNMSAPMPAVVPAA RKATAAVIFLHGL GDTGHGWAEAFAGIKSPHIKYICPHAPVMPVTLNMMAMP SWFDIVGLSP DSQEDESIGKQAAETVKALIDQEVKNGIPSNRIILGGFSQG GALSLYTAL TTQKLAGVTALSCWLPLRASFSQGPINSANRDISVLQCH GDCDPLVPLM FGSLTVERLKALINPANVTFKIYEGMMHSSCQQEMMDVKH FIDKLLPPID	
<b>Predicted molecular weight</b>	27 kDa including tags	
<b>Amino acids</b>	1 to 230	
<b>Tags</b>	His tag N-Terminus	

### Specifications

Our **Abpromise guarantee** covers the use of **ab101156** in the following tested applications.

The application notes include recommended starting dilutions; optimal dilutions/concentrations should be determined by the end user.

<b>Applications</b>	Mass Spectrometry SDS-PAGE
<b>Mass spectrometry</b>	MALDI-TOF

**Form** Liquid

## Preparation and Storage

**Stability and Storage** Shipped at 4°C. Upon delivery aliquot and store at -20°C or -80°C. Avoid repeated freeze / thaw cycles.  
pH: 8.00  
Constituents: 0.0154% DTT, 0.316% Tris HCl, 10% Glycerol (glycerin, glycerine), 0.58% Sodium chloride

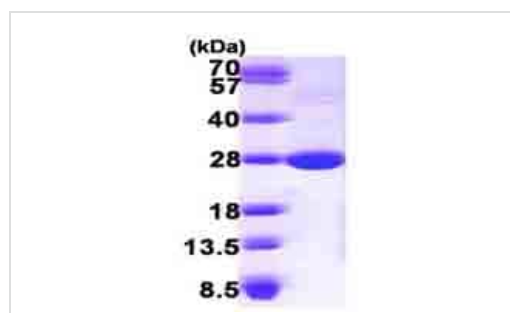
## General Info

**Function** Hydrolyzes fatty acids from S-acylated cysteine residues in proteins such as trimeric G alpha proteins or HRAS. Has depalmitoylating activity and also low lysophospholipase activity.

**Sequence similarities** Belongs to the AB hydrolase 2 family.

**Cellular localization** Cytoplasm.

## Images



15% SDS-PAGE showing ab101156 at approximately 26.8 kDa (3 µg).

SDS-PAGE - Recombinant Mouse  
Lysophospholipase 1/LPL-I protein (ab101156)

**Please note:** All products are "FOR RESEARCH USE ONLY. NOT FOR USE IN DIAGNOSTIC PROCEDURES"

## Our Abpromise to you: Quality guaranteed and expert technical support

- Replacement or refund for products not performing as stated on the datasheet
- Valid for 12 months from date of delivery
- Response to your inquiry within 24 hours
- We provide support in Chinese, English, French, German, Japanese and Spanish
- Extensive multi-media technical resources to help you
- We investigate all quality concerns to ensure our products perform to the highest standards

If the product does not perform as described on this datasheet, we will offer a refund or replacement. For full details of the Abpromise, please visit <https://www.abcam.com/abpromise> or contact our technical team.

## Terms and conditions

---

- Guarantee only valid for products bought direct from Abcam or one of our authorized distributors