

Product datasheet

Recombinant mouse M-CSF protein ab129146

★★★★★ [1 Abreviews](#) [5 References](#) [2 Images](#)

Description

Product name	Recombinant mouse M-CSF protein
Biological activity	Method of Determination: NFS-60 cell proliferation Acceptation Criteria: ED₅₀ ≤10 ng/mL(≥ 1.0 x 10 ⁵ units/mg)
Purity	≥ 95 % SDS-PAGE. Purified using standard chromatographical techniques.
Endotoxin level	≤1.000 Eu/μg
Expression system	Escherichia coli
Accession	<u>P07141</u>
Protein length	Protein fragment
Animal free	No
Nature	Recombinant
Species	Mouse
Sequence	MKEVSEHCSH MIGNGHLKVL QQLIDSQMET SCQIAFEFVD QEQLDDPVCYLKKAFFLVQD IIDETMRFKD NTPNANATER LQELSNLNS CFTKDYEEQN KACVRTFHET PLQLLEKIKN FFNETKNLLE KDWNIFTKNC NNSFAKCSSR DVVTKPMKEV SEHCSHMIGN GHLKVLQQLIDSQMETSCQI AFEFVDQEQL DDPVCYLKKA FFLVQDIIDE TMRFKDNTPN ANATERLQEL SNNLNSCFTK DYEEQNKACV RTFHETPLQL LEKKNFFNE TKNLLEKDWN IFTKNCNNSF AKCSSRDVVT KP
Predicted molecular weight	36 kDa
Amino acids	33 to 187

Specifications

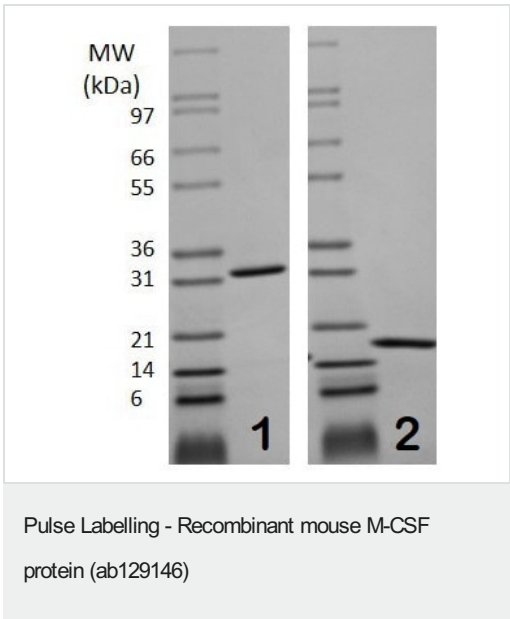
Our **Abpromise guarantee** covers the use of **ab129146** in the following tested applications.

The application notes include recommended starting dilutions; optimal dilutions/concentrations should be determined by the end user.

Applications	SDS-PAGE
	Functional Studies

Form	Lyophilized
Additional notes	Endotoxin levels determined by kinetic LAL (50% Confidence).
Preparation and Storage	
Stability and Storage	<p>Shipped at Room Temperature. Upon reconstitution add a carrier protein (0.1% BSA). Store at -80°C. Avoid freeze / thaw cycle.</p> <p>Constituents: 0.16% Sodium phosphate, 0.29% Sodium chloride</p> <p>This product is an active protein and may elicit a biological response in vivo, handle with caution.</p>
Reconstitution	<p>Sterile water at 0.1 mg/mL Centrifuge vial before opening. Suspend the product by gently pipetting the above recommended solution down the sides of the vial. DO NOT VORTEX. Allow several minutes for complete reconstitution.</p>
General Info	
Function	<p>Granulocyte/macrophage colony-stimulating factors are cytokines that act in hematopoiesis by controlling the production, differentiation, and function of 2 related white cell populations of the blood, the granulocytes and the monocytes-macrophages. CSF-1 induces cells of the monocyte/macrophage lineage. It plays a role in immunological defenses, bone metabolism, lipoproteins clearance, fertility and pregnancy.</p>
Post-translational modifications	<p>Glycosylation and proteolytic cleavage yield different soluble forms. A high molecular weight soluble form is a proteoglycan containing chondroitin sulfate.</p> <p>Isoform 1 is N- and O-glycosylated. Isoform 3 is N-glycosylated.</p>
Cellular localization	Cell membrane and Secreted > extracellular space.

Images

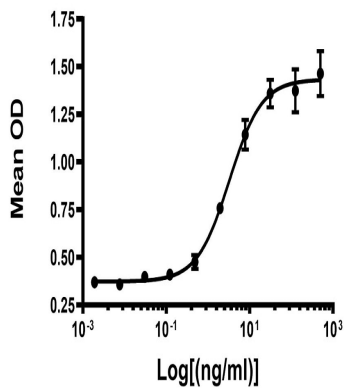


1 ug of ab129146 on 4-20% Tris-Glycine SDS-PAGE, stained with Coomassie Blue.

Lane 1: Non-reducing

Lane 2: Reducing.

Recombinant murine M-CSF Induced Proliferation of M-NFS-60 cells



Functional Studies - Recombinant mouse M-CSF protein (ab129146)

Functional analysis of ab129146

Please note: All products are "FOR RESEARCH USE ONLY. NOT FOR USE IN DIAGNOSTIC PROCEDURES"

Our Abpromise to you: Quality guaranteed and expert technical support

- Replacement or refund for products not performing as stated on the datasheet
- Valid for 12 months from date of delivery
- Response to your inquiry within 24 hours
- We provide support in Chinese, English, French, German, Japanese and Spanish
- Extensive multi-media technical resources to help you
- We investigate all quality concerns to ensure our products perform to the highest standards

If the product does not perform as described on this datasheet, we will offer a refund or replacement. For full details of the Abpromise, please visit <https://www.abcam.com/abpromise> or contact our technical team.

Terms and conditions

- Guarantee only valid for products bought direct from Abcam or one of our authorized distributors